





2021-2022 ANNUAL REPORT

EXECUTIVE SUMMARY 2

EXHIBITIONS AND LOANS 12

ACQUISITIONS 36

DONOR SUPPORT 94

BOARD OF TRUSTEES
AND VOLUNTEER LEADERSHIP 120

STAFF 130

FINANCIALS 142



At the conclusion of each fiscal year, we are given the opportunity to pause and reflect on our wins and our losses, our triumphs and our shortcomings, and, most importantly, on what we must champion and what we must change to best serve our community.

664,710

GUESTS WELCOMED TO THE MUSEUM

138%

INCREASE IN VISITORS OVER THE PREVIOUS FISCAL YEAR

72,333

VISITORS PURCHASED A TICKET

ACCOMPLISHMENTS



The 2022 fiscal year was a year of great accomplishment and celebrated resilience. In our first whole year of programming without closure since the onset of the COVID-19 pandemic, the DMA returned to full operational capacity with our staff still intact. A total of 356,154 visitors took advantage of the Museum’s free admission, a 138% increase over the previous fiscal year, and 72,333 of them also purchased a ticket to see a special exhibition.

Of these exhibitions, visitors were most dazzled by *Cartier and Islamic Art: In Search of Modernity*, which explored the Islamic inspirations behind the sparkling jewels of the genius Maison Cartier and saw almost 65,000 visitors in its four-month run at the Museum. As this blockbuster exhibition’s only North American venue, the DMA received visitors from all over Texas, across the nation, and even abroad. *Cartier and Islamic Art* was also the focus of great critical acclaim—with *Vogue* calling it “a hit exhibition” and the *Wall Street Journal* hailing it as “a resplendent show”—as well as significant media attention from *Forbes*, *Elle*, *Vanity Fair*, and *Harper’s Bazaar*.



In addition to the breathtaking *Cartier and Islamic Art*, the DMA was honored to host the world premiere of *Van Gogh and the Olive Groves*, the first exhibition dedicated to the legendary artist’s spellbinding olive grove series. This exhibition captivated DMA audiences by tracing Van Gogh’s shifting motivations and stylistic approaches, all through the expressive powers of color and line that the artist employed throughout his career and that are universally familiar to audiences of all backgrounds. Almost 50,000 visitors from as far away as Singapore engaged in up-close-and-personal encounters with Van Gogh’s olive grove paintings.



65,000

PURCHASED TICKETS FOR
CARTIER AND ISLAMIC ART:
IN SEARCH OF MODERNITY

3,200

COMMUNITY MEMBERS JOINED OUR
GUADALUPE ROSALES: DRIFTING ON
A MEMORY "LOWRIDER CELEBRATION"

50,000

VISITORS SAW VAN GOGH AND THE
OLIVE GROVES FROM AS FAR AWAY
AS SINGAPORE

In 2022 the Dallas Museum of Art continued to place an emphasis on collecting and exhibiting works of art that reflect the diverse makeup of our region. The Museum had the unique opportunity to commission an original mural from Latinx artist Guadalupe Rosales for the installation *Drifting on a Memory*. Rosales collaborated with Dallas-based lowrider artist Lokey Calderon to create an immersive work in the DMA's Concourse that nods to lowrider culture and uses sound to replicate the aural experience of cruising in East LA. The DFW community responded to this installation with resounding support. Over 3,000 members of the community joined together to immerse themselves in lowrider culture and local Latinx talent at a "Lowrider Celebration" event in honor of *Drifting on a Memory*. The 2022 fiscal year also saw the continuation of the first-ever museum retrospective for the noted North Texas sculptor Octavio Medellín. Featuring approximately 60 works, *Octavio Medellín: Spirit and Form* explores the evolution of the artist's sculptural practice, his public art, and his influence on generations of students as an instructor at the school of the Dallas Museum of Fine Arts and as founder of the Creative Arts Center of Dallas. These exhibitions, as well as *Spirit Lodge: Mississippian Art from Spiro, Rooted, Bamana Mud Cloth: From Mali to the World*, and *Bosco Sodi: La fuerza del destino*, demonstrate the Museum's commitment to celebrate diverse communities and minority artists to ensure all feel a sense of welcome at the DMA.



322

NEW WORKS FROM ACROSS
CULTURES AND TIME WERE ACQUIRED

The DMA's global collection grew in size by 322 works this year, all of which are sure to provoke lively discussion and deep reflection among Museum visitors and scholars alike. Ranging in medium from textiles to photography and in geography from Mexico to Sudan, these newly acquired works embody the DMA's pursuit of excellence in collecting, in presenting works of art across cultures and time, and in being a driving force in contemporary art. Highlights include the Mahdi tunic (see p. 42), which serves as a visual reflection of the lifestyle of Dervish religious ascetics in the late 19th century; British-Mexican Surrealist Leonora Carrington's *Under the Compass Rose* (see p. 59), a haunting confluence of mysticism and portraiture; and Calida Rawles's *In His Image* (see p. 51), a hyper-realistic portrait of North Texas artist Diedrick Brackens floating in a pool of gleaming blue water that, all at once, explores themes of intimacy, identity, and healing.



Diversity, equity, and inclusion (DEI) continue to be a priority for the DMA. In April 2021, the Museum was awarded a Ford Foundation grant. This funding, available through March 2023, is to be used to create a more inclusive employee experience, provide internal education for a shared understanding of DEI, build trust, diversify candidate pipelines, and improve internal communications related to diversity, equity, and inclusion.

40%

OF OUR BOARD OF TRUSTEES
ARE BIPOC

89%

OF MUSEUM LEADERSHIP
IS FEMALE



This pivotal year saw the appointment of four new members of the Director's Team. In December 2021, Sally Pietsch assumed the position of Chief Financial Officer, bringing more than 15 years of experience in financial oversight at museums to the DMA. In January 2022, Brad Pritchett, a results-oriented nonprofit professional, joined the DMA as the new Chief Marketing and Communications Officer. Stacey Lizotte, who served the DMA as the League Director of Adult Programs for 18 years, was named The Allen and Kelli Questrom Center for Creative Connections Education Director in June 2022. Sara Ousby became the Museum's first Director of Strategic Initiatives in May 2022; this new leadership role was created to align goals and priorities to drive the Museum's strategic plan. These forward-thinking leaders have played a key role in cultivating the successes of this fiscal year and catalyzing change for years to come.



CONNECTION AND COLLABORATION

40,938

NORTH TEXAS STUDENTS AND TEACHERS PARTICIPATED IN 1,000 SCHOOL PROGRAMS

2,716

VISITORS ATTENDED OUR FAMILY FESTIVAL AND ENJOYED PERFORMANCES, GALLERY TOURS, AND ART MAKING

2,000

ON-SITE VISITORS ATTENDED OUR ANNUAL LATE NIGHT: PRIDE BLOCK PARTY

Programming is the key to reaching each and every corner of our community. We have been delighted to welcome not only North Texans but people from across the globe to take part in the full breadth of the Museum's offerings following years of COVID-19 lockdowns and restrictions. In total, over 15,000 tickets were sold or reserved throughout the fiscal year, and over 100,000 visitors of all ages and backgrounds enjoyed Museum programming.

In this fiscal year alone, 360 artists, 80 speakers, and countless community partners collaborated with the Museum to execute a robust calendar of events. Our annual Late Night: *Pride Block Party* included an increase in partnerships, with 28 LGBTQ+ artists and organizations such as Arttitude, Flexible Gray Theater, United Black Ellument, and Dallas Southern Pride participating. This collaboration with the wider Dallas Arts District resulted in almost 2,000 on-site Museum visitors and many more accessing the outdoor events throughout the Arts District. During the year, the School Programs team presented over 1,000

16,986

VISITS CAME FROM RESIDENTS IN ZIP CODES PRIORITIZED IN THE DALLAS CULTURAL PLAN

21%

OF VISITORS CAME FROM THE CITY OF DALLAS

63%

OF VISITORS CAME FROM THE DFW METROPLEX

82%

OF VISITORS CAME FROM THE STATE OF TEXAS

5,486

VISITORS CAME FROM INTERNATIONAL LOCATIONS REPRESENTING 108 COUNTRIES

100,872

VISITORS OF ALL AGES AND BACKGROUNDS ENJOYED THE MUSEUM'S PROGRAMMING

programs to over 40,000 students and teachers across North Texas. New initiatives included creating customized art kits for two DISD elementary school campuses, filming a behind-the-scenes *Conservation for Kids* video, producing and distributing a free art poster highlighting the work of African American artist Henry Ossawa Tanner, and launching four new K-6 Go van Gogh® outreach lessons. In spring 2022, the Family, Youth, and School Programs team piloted a new approach to planning Family Festivals. This created space for more voices and perspectives in the brainstorming, planning, and execution of a community-centered family festival. Partners from First3Years, Trust for Public Land, the Dallas Public Library, Southern Sector Rising, Partner Resource Network, and Forward Dallas ran activities and worked with our staff to create a welcoming, inclusive, and creative space at the DMA. More than 2,700 visitors attended the festival and enjoyed performances, gallery tours, artist demonstrations, yoga, and art making. Such programs opened the door for collaboration with notable institutions such as Artstillery, the Japan-America Society, and the International Rescue Committee. They also demonstrated the transformative power of programming and its ability to enhance the works on view and amplify both the Museum's mission and the unique voices of marginalized and underserved communities.

DMA staff did not take the challenge of returning to a full programming slate lightly. Instead, they barreled forward with the inclusion of a brand-new program and the addition of new resources to the Museum's accessibility toolbox. The Adult Programs and Community Engagement teams worked together to launch Creative Care: Art Therapy, a specialized program that focuses on addressing emotional well-being through customized experiences with art. Led by an art therapist and DMA educators, this program explores and affirms personal narratives using the Museum's collection and exhibitions as inspiration for in-gallery conversations, hands-on art-making projects, individual reflection, and collective empowerment. In the endeavor to create a more accessible and inclusive museum for all, the DMA created large-print and Braille booklets for the *Rooted* exhibition, introduced de-escalation resources for summer camps and other classes based on trauma-informed practices, and, for the first time, used sensory bins for community programs. We are proud to facilitate these programs and resources in order to bring the love of art to our visitors of all needs and abilities.



and facilities and create a plan for the future of the Museum. While this incident is an indisputable tragedy, we are forever grateful for the strong, collaborative leadership of our Board of Trustees and our incredible staff, who banded together to resolve this issue as efficiently and thoroughly as possible. Above all, we are grateful for the abundance of community members, colleagues, peers, fellow museums, and DMA supporters here in Dallas and from around the world who reached out to express their support in the wake of this tragic event. From the Dallas Arts District to the American Alliance of Museums and the Association of Art Museum Directors, this outpouring of support and solidarity will be remembered for years to come.

DEFINING DIRECTION



Ending the fiscal year on a resoundingly high note, the DMA launched an updated brand platform and voice in June 2022, inviting visitors to “imagine their journey” during their visit to the Museum. This brand refresh is so much more than words and colors—it’s a revitalization of our core ethos, amplifying our commitment to placing art at the center and equity at the core from which all activities radiate. Each visitor enters the DMA with their own unique experiences, perspectives, and intentions for their visit, contributing to the story of the Museum and its collection, and paving the path for its future. At its heart, the DMA is a collage of different cultures, ideas, and perspectives, and we look forward to using this brand refresh as a launching point to work with and increase community voices.



To kick off the 2023 fiscal year, our “brand anthem” premiered on DMA social media channels on July 1 and on WFAA on July 5. This 60-second commercial, which invites visitors to discover their own inspiration within the walls of the Museum, entering curious and leaving changed, reached over 2,300,000 viewers in just its first two weeks and continued to air on WFAA through the end of September 2022. We also kicked off the fiscal year by partnering with WFAA to take over *Good Morning Texas*, Texas’s premier live talk show. *Good Morning Texas* packed up their studio and set up shop in the Center for Creative Connections (C3). This live broadcast, which reached over 12,000 viewers, was dedicated exclusively to the DMA and all that we have to offer.



We look forward to building upon this initial success and will continue to invite our partners, patrons, and community to imagine their journey with the DMA as we work to strengthen our position as an institution designed for the future.

CHALLENGES

While this year brought an abundance of new opportunities and achievements, our institution also faced tragedy and unprecedented challenges.

Fiscal year 2022 saw an unprecedented violation that resulted in damage to art. On June 1, 2022, after Museum hours, an individual forcibly entered the Dallas Museum of Art. Fortunately, no parties were harmed, and Dallas Police took the individual into custody at the scene. The damaged works of art are currently in the care of our expert conservation team for ongoing assessment and potential repair. In response to this incident, we immediately implemented changes and have hired a third-party security consultant to ensure our security measures exceed best practice standards, taking DMA procedures and necessary updates to our facilities into account. As a City-owned building, we continue to work in partnership with the City of Dallas to assess our current systems



IN MEMORIAM

It is with deep regret and profound sadness that we report the passing of the following trustees (current and former) and DMA Circle members in fiscal year 2022. Each of these individuals demonstrated a deep commitment to the arts and to transforming the DMA into the strong and innovative institution it is today. Their legacies will live on not only through their contributions to the Museum but through their impact on the Dallas arts community as a whole.



J. E. R. "Bob" Chilton III



William M. "Bill" Lamont, Jr.

Henri Bromberg

Clarence B. Brown

J. E. R. "Bob" Chilton III
Benefactor Trustee

Mary Anne Cree

Louise Eiseman

Marilyn Klepak

William M. "Bill" Lamont, Jr.
Chairman of the Board

Harry H. Lynch

Tom F. Marsh

Jere Mitchell

Peter O'Donnell

Patricia O. Pace

Virginia G. Payne

Robert G. Pollock

Robert C. Richter

Joe H. Staley

Susan M. Tribble





All exhibitions are supported, in part, by the generosity of DMA Members and donors, the National Endowment for the Arts, the Texas Commission on the Arts, and the citizens of Dallas through the City of Dallas Office of Arts and Culture.

EXHIBITIONS



Behind the Scenes

June 17, 2016–ongoing

The exhibition was organized by the Dallas Museum of Art.

The curators for this exhibition were Sue Canterbury, The Pauline Gill Sullivan Curator of American Art and Interim Allen and Kelli Questrom Curator of Works on Paper, and Fran Baas, Interim Chief Conservator.



**Not Visible to the Naked Eye:
Inside a Senofo Helmet Mask**

November 23, 2019–ongoing

The exhibition was organized by the Dallas Museum of Art. Media support was provided by *The Dallas Morning News*.

The curators for this exhibition were Dr. Roslyn A. Walker, Senior Curator of the Arts of Africa, the Americas, and the Pacific and The Margaret McDermott Curator of African Art, and Fran Baas, Interim Chief Conservator.



C3 – Migration

February 1, 2020–October 31, 2021

The exhibition was organized by the Dallas Museum of Art. This exhibition was made possible by The Bonnie Pitman Education Endowment to Do Something New. The curators for this exhibition were Dr. Emily Schiller, Senior Manager of Interpretation, and Claire Moore, former Allen and Kelli Questrom Center for Creative Connections Education Director.



For a Dreamer of Houses

March 15, 2020–July 4, 2021

The exhibition was organized by the Dallas Museum of Art. Exhibition support was provided by Elisabeth Karpidas, Hall Arts Hotel, the TWO x TWO for AIDS and Art Fund, and the DMA Contemporary Art Initiative. Local support was provided by VisitDallas. The curator for this exhibition was Dr. Anna Katherine Brodbeck, Hoffman Family Senior Curator of Contemporary Art.



Moth to Cloth: Silk in Africa

December 20, 2020–October 24, 2021

The exhibition was organized by the Dallas Museum of Art. Media support was provided by *The Dallas Morning News*. The curator for this exhibition was Dr. Roslyn A. Walker, Senior Curator of the Arts of Africa, the Americas, and the Pacific and The Margaret McDermott Curator of African Art.



**Curbed Vanity:
A Contemporary Foil by Chris Schanck**

February 7–August 29, 2021

The exhibition was organized by the Dallas Museum of Art. Exhibition support was provided by the DMA Decorative Arts and Design Initiative.

The curator for this exhibition was Sarah Schleuning, The Margot B. Perot Senior Curator of Decorative Arts and Design.



**Devoted: Art and Spirituality
in Mexico and New Mexico**

March 7, 2021–January 2, 2022

The exhibition was organized by the Dallas Museum of Art. Hispanic media support was provided by Univision.

The curator for this exhibition was Dr. Mark A. Castro, The Jorge Baldor Curator of Latin American Art.



**Cubism in Color:
The Still Lives of Juan Gris**

March 18–July 25, 2021

The exhibition was co-organized by the Dallas Museum of Art and The Baltimore Museum of Art and presented by Texas Instruments. Additional support was provided by Acción Cultural Española, the Robert Lehman Foundation, and the Freeman Family Exhibition Fund. Exhibition support was provided by the National Endowment for the Arts and Ben E. Keith.

The curators for this exhibition were Dr. Nicole Myers, Interim Chief Curator and The Barbara Thomas Lemmon Senior Curator of European Art, and Katy Rothkopf, The Anne and Ben Cone Memorial Director of the Ruth R. Marder Center for Matisse Studies, and Senior Curator of European Painting and Sculpture, The Baltimore Museum of Art.

The exhibition was accompanied by a catalogue copublished by the DMA.



**Concentrations 63: Julian Charrière,
Towards No Earthly Pole**

May 2–August 8, 2021

The exhibition was organized by the Dallas Museum of Art. Major support was provided by EarthX and Institut für Auslandsbeziehungen. Exhibition support was provided by Pro Helvetia, the Swiss Arts Council; the TWO x TWO for AIDS and Art Fund; and the DMA Contemporary Art Initiative. Media support was provided by CultureMap.

The curator for this exhibition was Dr. Anna Katherine Brodbeck, Hoffman Family Senior Curator of Contemporary Art.

The exhibition was accompanied by a catalogue copublished by the DMA.



Focus On: Henry Ossawa Tanner

August 17, 2021-January 2, 2022

The exhibition was co-organized by the Dallas Museum of Art and Art Bridges. Support for this exhibition was provided by Art Bridges.

The curator for this exhibition was Sue Canterbury, The Pauline Gill Sullivan Curator of American Art and Interim Allen and Kelli Questrom Curator of Works on Paper.

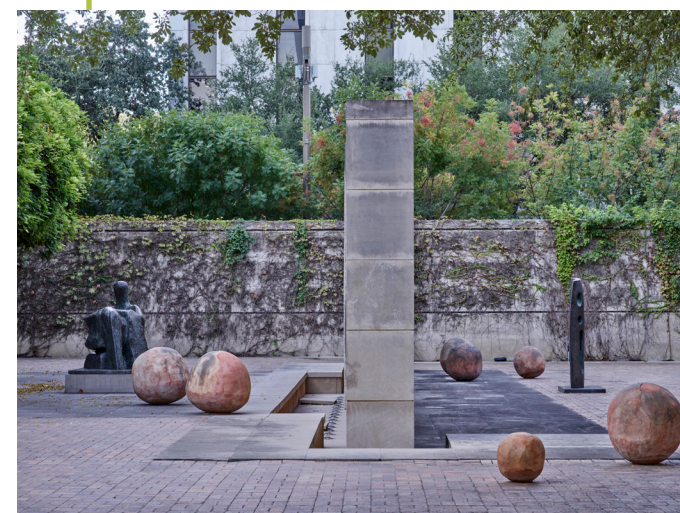


Slip Zone: A New Look at Postwar Abstraction in the Americas and East Asia

September 14, 2021-July 10, 2022

The exhibition was organized by the Dallas Museum of Art. Exhibition support was provided by the TWO x TWO for AIDS and Art Fund and the DMA Contemporary Art Initiative.

The curators for this exhibition were Dr. Anna Katherine Brodbeck, Hoffman Family Senior Curator of Contemporary Art; Dr. Vivian Li, The Lupe Murchison Curator of Contemporary Art; and Vivian Agatha Crockett, former Nancy and Tim Hanley Assistant Curator of Contemporary Art.



Bosco Sodi: La fuerza del destino

September 14, 2021-July 10, 2022

The exhibition was organized by the Dallas Museum of Art. Exhibition support was provided by the TWO x TWO for AIDS and Art Fund and the DMA Contemporary Art Initiative.

The curator for this exhibition was Dr. Anna Katherine Brodbeck, Hoffman Family Senior Curator of Contemporary Art.

The exhibition was accompanied by a catalogue copublished by the DMA.



**Naudine Pierre:
What Could Be Has Not Yet Appeared**

September 26, 2021–May 15, 2022

The exhibition was organized by the Dallas Museum of Art. Exhibition support was provided by the TWO x TWO for AIDS and Art Fund and the DMA Contemporary Art Initiative.

The curator for this exhibition was Hilde Nelson, former Curatorial Assistant for Contemporary Art.

The exhibition was accompanied by a catalogue copublished by the DMA.



**Point, Line, Plane: The William B. Jordan
and Robert Dean Brownlee Bequest**

September 26, 2021–January 9, 2022

The exhibition was organized by the Dallas Museum of Art. Local support was provided by the Gay & Lesbian Fund for Dallas.

The curator for this exhibition was Sue Canterbury, The Pauline Gill Sullivan Curator of American Art and Interim Allen and Kelli Questrom Curator of Works on Paper.



**Pursuit of Beauty:
The May Family Collection**

October 10, 2021–January 9, 2022

The exhibition was organized by the Dallas Museum of Art.

The curator for this exhibition was Sue Canterbury, The Pauline Gill Sullivan Curator of American Art and Interim Allen and Kelli Questrom Curator of Works on Paper.

The exhibition was accompanied by a catalogue published by the DMA.

THE ARTS OF AFRICA



Van Gogh and the Olive Groves

October 17, 2021–February 6, 2022

The exhibition was co-organized by the Dallas Museum of Art and the Van Gogh Museum, Amsterdam and was co-presented by Texas Instruments and PNC Bank. This exhibition was supported by an indemnity from the Federal Council on the Arts and the Humanities. Major support for the exhibition was provided by The Dallas Foundation through the Jean Baptiste “Tad” Adoue III Fund, Sidley Austin, and the Freeman Family Exhibition Fund. Local support was provided by VisitDallas. Media support was provided by *D Magazine*.

The curators for this exhibition were Dr. Nicole Myers, Interim Chief Curator and The Barbara Thomas Lemmon Senior Curator of European Art, and Nienke Bakker, Senior Curator of Paintings, Van Gogh Museum.

The exhibition was accompanied by a catalogue published by the DMA.



Bamana Mud Cloth: From Mali to the World

November 13, 2021–May 7, 2023

The exhibition was organized by the Dallas Museum of Art.

The curator for this exhibition was Dr. Roslyn A. Walker, Senior Curator of the Arts of Africa, the Americas, and the Pacific and The Margaret McDermott Curator of African Art.



Guadalupe Rosales: Drifting on a Memory
December 10, 2021–June 18, 2023

The exhibition was organized by the Dallas Museum of Art. Exhibition support was provided by the TWO x TWO for AIDS and Art Fund and the DMA Contemporary Art Initiative. Hispanic media support was provided by Univision.

The curators for this exhibition were Vivian Agatha Crockett, former Nancy and Tim Hanley Assistant Curator of Contemporary Art, and Dr. Vivian Li, The Lupe Murchison Curator of Contemporary Art.



C3 – Rooted
December 26, 2021–May 15, 2024

The exhibition was organized by the Dallas Museum of Art. Local support was provided by the DMA Family Forum.

The curators for this exhibition were Dr. Emily Schiller, Senior Manager of Interpretation, and Claire Moore, former Allen and Kelli Questrom Center for Creative Connections Education Director.



Octavio Medellín: Spirit and Form
February 6, 2022–May 14, 2023

The exhibition was organized by the Dallas Museum of Art. Support for this exhibition came from The Jorge Baldor Curatorial Fund for Latin American Art. Exhibition catalogue support was provided by the Texas Art Collectors Organization (TACO). Major support was provided by The Pollock Foundation. Exhibition support was provided by Hibbs-Hallmark & Company and Scott Chase and Debra Witter. Hispanic media support was provided by Univision.

The curator for this exhibition was Dr. Mark A. Castro, The Jorge Baldor Curator of Latin American Art.

The exhibition was accompanied by a catalogue published by the DMA.



**Spirit Lodge:
Mississippian Art from Spiro**

March 13–August 7, 2022

The exhibition was organized by the National Cowboy & Western Heritage Museum. The exhibition was supported in part by the Kirkpatrick Foundation, the Henry Luce Foundation, and the National Endowment for the Humanities.

The curator for this exhibition was Dr. Michelle Rich, The Eleanor and Harry S. Parker III Assistant Curator of the Arts of the Americas.



**Cartier and Islamic Art:
In Search of Modernity**

May 14–September 18, 2022

The exhibition was co-organized by the Dallas Museum of Art and the Musée des Arts Décoratifs, Paris, in collaboration with the Musée du Louvre and with the support of Cartier. The Presenting Sponsor for this exhibition was PNC Bank. Major support was provided by Sewell Automotive Companies. Exhibition support was provided by the National Endowment for the Arts, Lisa and Clay Cooley, Nancy Dedman, Laura and Walter Elcock, Susan and Bill Montgomery, Nancy C. and Richard R. Rogers, Sogand Shoja, and Gayle Stoffel. Additional support was provided by Bela and Chase Cooley, Christina and Sal Jafar II, Catherine and Will Rose, Deedie Rose, and Vaughn O. Vennerberg II. Local support was provided by the DMA Decorative Arts & Design Initiative. Media support was provided by CBS Channel 11 and PaperCity.

The curators for this exhibition were Sarah Schleuning, The Margot B. Perot Senior Curator of Decorative Arts and Design; Dr. Heather Ecker, former Marguerite S. Hoffman and Thomas W. Lentz Curator of Islamic and Medieval Art; Judith Henon-Raynaud, Senior Curator, Musée du Louvre, Department of Islamic Art; and Évelyne Possémé, Senior Curator, Musée des Arts Décoratifs, Department of Ancient and Modern Jewelry.

The exhibition was accompanied by a catalogue copublished by the DMA.



Traveling Exhibitions Organized by the Dallas Museum of Art



Cubism in Color: The Still Lives of Juan Gris

Traveled to:
The Baltimore Museum of Art
September 12, 2021-January 9, 2022

The exhibition was co-organized by the Dallas Museum of Art and The Baltimore Museum of Art and presented by Texas Instruments. Additional support was provided by Acción Cultural Española, the Robert Lehman Foundation, and the Freeman Family Exhibition Fund. Exhibition support was provided by the National Endowment for the Arts and Ben E. Keith.

The curators for this exhibition were Dr. Nicole Myers, Interim Chief Curator and The Barbara Thomas Lemmon Senior Curator of European Art, and Katy Rothkopf, The Anne and Ben Cone Memorial Director of the Ruth R. Marder Center for Matisse Studies, and Senior Curator of European Painting and Sculpture, The Baltimore Museum of Art.

The exhibition was accompanied by a catalogue copublished by the DMA.



Van Gogh and the Olive Groves

Traveled to:
Van Gogh Museum, Amsterdam
March 11-June 12, 2022

The exhibition was co-organized by the Dallas Museum of Art and the Van Gogh Museum, Amsterdam and was co-presented by Texas Instruments and PNC Bank. This exhibition was supported by an indemnity from the Federal Council on the Arts and the Humanities. Major support for the exhibition was provided by The Dallas Foundation through the Jean Baptiste "Tad" Adoue Fund, Sidley Austin, and the Freeman Family Exhibition Fund. Local support was provided by VisitDallas. Media support was provided by *D Magazine*.

The curators for this exhibition were Dr. Nicole Myers, Interim Chief Curator and The Barbara Thomas Lemmon Senior Curator of European Art, and Nienke Bakker, Senior Curator of Paintings, Van Gogh Museum.

The exhibition was accompanied by a catalogue published by the DMA.



Cartier and Islamic Art: In Search of Modernity

Traveled to:
Musée des Arts Décoratifs, Paris
October 21, 2021–February 20, 2022

The exhibition was co-organized by the Dallas Museum of Art and the Musée des Arts Décoratifs, Paris, in collaboration with the Musée du Louvre and with the support of Cartier. The Presenting Sponsor for this exhibition was PNC Bank. Major support was provided by Sewell Automotive Companies. Exhibition support was provided by the National Endowment for the Arts, Lisa and Clay Cooley, Nancy Dedman, Laura and Walter Elcock, Susan and Bill Montgomery, Nancy C. and Richard R. Rogers, Sogand Shoja, and Gayle Stoffel. Additional support was provided by Bela and Chase Cooley, Christina and Sal Jafar II, Catherine and Will Rose, Deedie Rose, and Vaughn O. Vennerberg II. Local support was provided by the DMA Decorative Arts & Design Initiative. Media support was provided by CBS Channel 11 and *PaperCity*.

The curators for this exhibition were Sarah Schleuning, The Margot B. Perot Senior Curator of Decorative Arts and Design; Dr. Heather Ecker, former Marguerite S. Hoffman and Thomas W. Lentz Curator of Islamic and Medieval Art; Judith Henon-Raynaud, Senior Curator, Musée du Louvre, Department of Islamic Art; and Évelyne Possémé, Senior Curator, Musée des Arts Décoratifs, Department of Ancient and Modern Jewelry.

The exhibition was accompanied by a catalogue copublished by the DMA.





Each year, the Dallas Museum of Art lends works from its collection to important art institutions around the world. Between July 1, 2021, and June 30, 2022, the DMA lent art to 44 institutions.

Ashmolean Museum of Art and Archaeology, Oxford, England

AT&T Performing Arts Center, Dallas

The Baltimore Museum of Art

Brandywine River Museum, Chadds Ford, PA

Burchfield-Penney Art Center, Buffalo

CaixaForum Barcelona

Centre de la Vieille Charité – Direction des Musées, Marseille

Centre Georges Pompidou Musée National d'Art Moderne, Paris

Cleveland Museum of Art

Columbus Museum of Art

Dallas Arboretum and Botanical Garden

Figge Art Museum, Davenport, IA

Fondation Beyeler/Beyeler Museum AG, Riehen, Switzerland

Heard Museum, Phoenix

The High Museum of Art, Atlanta

Houston Museum of Natural Science

Kimbell Art Museum, Fort Worth

Kunstmuseum Basel

Los Angeles County Museum of Art

McNay Art Museum, San Antonio

The Minneapolis Institute of Arts

Modern Art Museum of Fort Worth

Musée de l'Orangerie, Paris

Musée d'Orsay, Paris

Museo Thyssen-Bornemisza, Madrid

Museum of Arts and Design, New York

The Museum of Modern Art, New York

Museum of the Southwest, Midland, TX

The Nasher Sculpture Center, Dallas

National Gallery of Art, Washington, DC

National Portrait Gallery, Washington, DC

Norton Museum of Art, West Palm Beach

The Pennsylvania Academy of the Fine Arts, Philadelphia

Portland Museum of Art, Portland, ME

San Antonio Museum of Art

Santa Barbara Museum of Art

Städelsches Kunstinstitut und Städtische Galerie, Frankfurt

UT Southwestern Medical Center at Dallas

Van Gogh Museum, Amsterdam

Vero Beach Museum of Art, Vero Beach, FL

The Warehouse, LLC, Dallas

Westmoreland Museum of American Art, Greensburg, PA

Whitney Museum of American Art, New York

Yale Center for British Art, New Haven, CT



322

TOTAL NUMBER OF WORKS ACQUIRED

265

WORKS WERE GIFTS

57

WORKS WERE PURCHASES

ACQUISITION HIGHLIGHTS





ALFRED STIEGLITZ
Ida O'Keeffe with Birthday Cake
1924
Gelatin silver print
Gift of Daile Kaplan in honor of Jane Gordon Cabaniss Rutledge,
2021.59



MARSDEN HARTLEY
Movement, Bermuda
1917
Oil on board laid on board
The Eugene and Margaret McDermott Art Fund, Inc., 2022.20.McD



HUGH HENRY BRECKENRIDGE

Landscape

About 1908

Oil on canvas

General Acquisitions Fund and Janet Kendall Forsythe Fund in honor of Janet Kendall Forsythe on behalf of the Earl A. Forsythe family, 2022.23



YEMI BISIRI, YORUBA PEOPLES; NIGERIA

Ogboni Group Figure

1960s

Cast copper alloy

African Collection Fund, 2022.9



BAQQARA ARABS; MAHDIST STATES, SUDAN

Jibba or Jubba (Tunic)

About 1898

Undyed local cotton ground, patches of European cloth, and wool appliqué with imported thread

Textile Acquisition Fund, 2022.43



ASANTE PEOPLES; GHANA

Weaving Sword

1900–2000

Wood

Gift of the Estate of John Lunsford, 2021.43.34



CHINA
Plate with Crucifixion Scene
1725-1775
Porcelain, enamel, and gilt
Gift of David T. Owsley in honor of Dr. Anne R. Bromberg, 2021.17



JALISCO, MEXICO
Seated Women
300 BCE-300 CE
Ceramic and pigment
The Otis and Velma Davis Dozier Fund, 2021.26



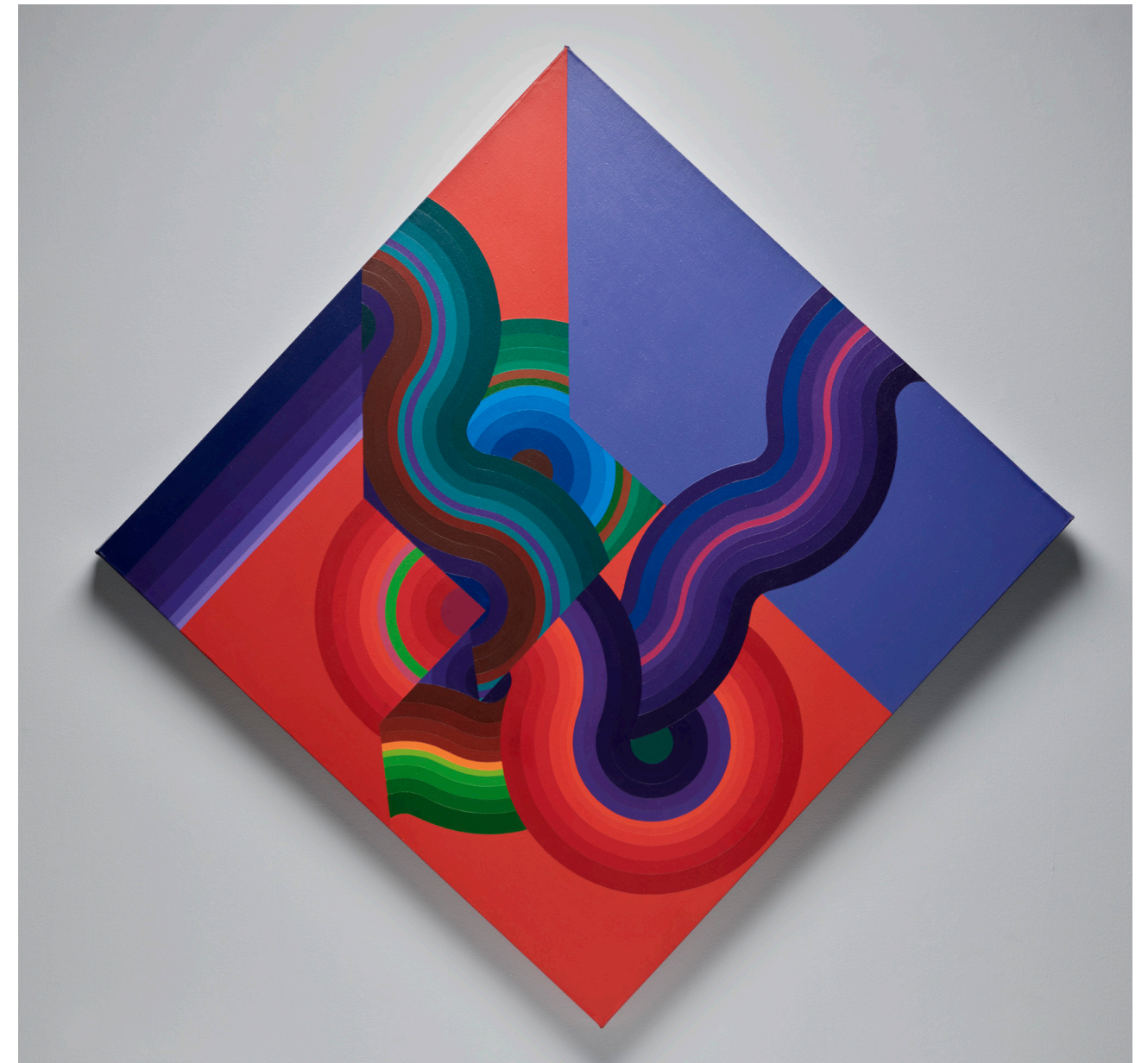
MARIA MARTINEZ AND POPOVI DA
Jar with Feather Design
1964
Ceramic
Gift of Pamela B. Mitchell and Jere H. Mitchell, MD, 2021.39



JALISCO OR MICHOACAN, MEXICO
Bowl
300 BCE-300 CE
Ceramic and pigment
Gift of the Estate of John Lunsford, 2021.43.113



ONO NIHA PEOPLES; CENTRAL NIAS ISLAND, INDONESIA
Osa-Osa Si Sara Mbagi (Commemorative Seat with an Animal Head)
1850–1950
Stone
Gift of Sally, William, Kris and Risser Estes, 2021.61



KAZUYA SAKAI
Integrales II (Edgard Varèse)
1979
Acrylic on canvas
Lay Family Acquisition Fund, 2021.18
© Kazuya Sakai's estate, Courtesy of Galería Vasari, Buenos Aires



NARI WARD
Iron Heavens II
1995
Oven pans, ironed sterilized cotton, and burnt wooden bats
The Rachofsky Collection Acquisition Fund, 2021.48.A-C
Courtesy the artist and Lehmann Maupin, New York, Hong Kong, Seoul, and London



CALIDA RAWLES
In His Image
2021
Acrylic on canvas
Gift of Marcia and Jonathan Sobel, 2022.1
Courtesy the artist and Lehmann Maupin, New York, Hong Kong, Seoul, and London

ACQUISITION HIGHLIGHTS
DESIGN AND DECORATIVE ART



ROBERTO LUGO
Erykah Badu Vessel
2021
Glazed ceramic
Discretionary Decorative Arts Fund, 2022.24
© Roberto Lugo



TAPIO WIRKKALA, DESIGNER; ODILON MARMOLEJO SANCHEZ, SILVERSMITH;
TANÉ, DISTRIBUTOR
Punch Bowl
About 1975
Sterling silver
Discretionary Decorative Arts Fund, 2021.33



HERBERT VON THADEN, DESIGNER; THADEN-JORDAN FURNITURE CORPORATION, MANUFACTURER

Chair

About 1946

Plywood and metal

Gift of Deedie Potter Rose, 2021.46.6



EDVARD MUNCH

View from Hisøya Near Arendal

1886

Oil on canvas

Gift of Cornelia and Ralph Heins in honor of Elinor Heins, 2021.32.12



BARTOLOMEO MANFREDI

A Bravo Figure

About 1605

Oil on canvas

Marguerite and Robert Hoffman Fund and gift of James Sight, 2022.26



PIERRE-AUGUSTE RENOIR AND RICHARD GUINO

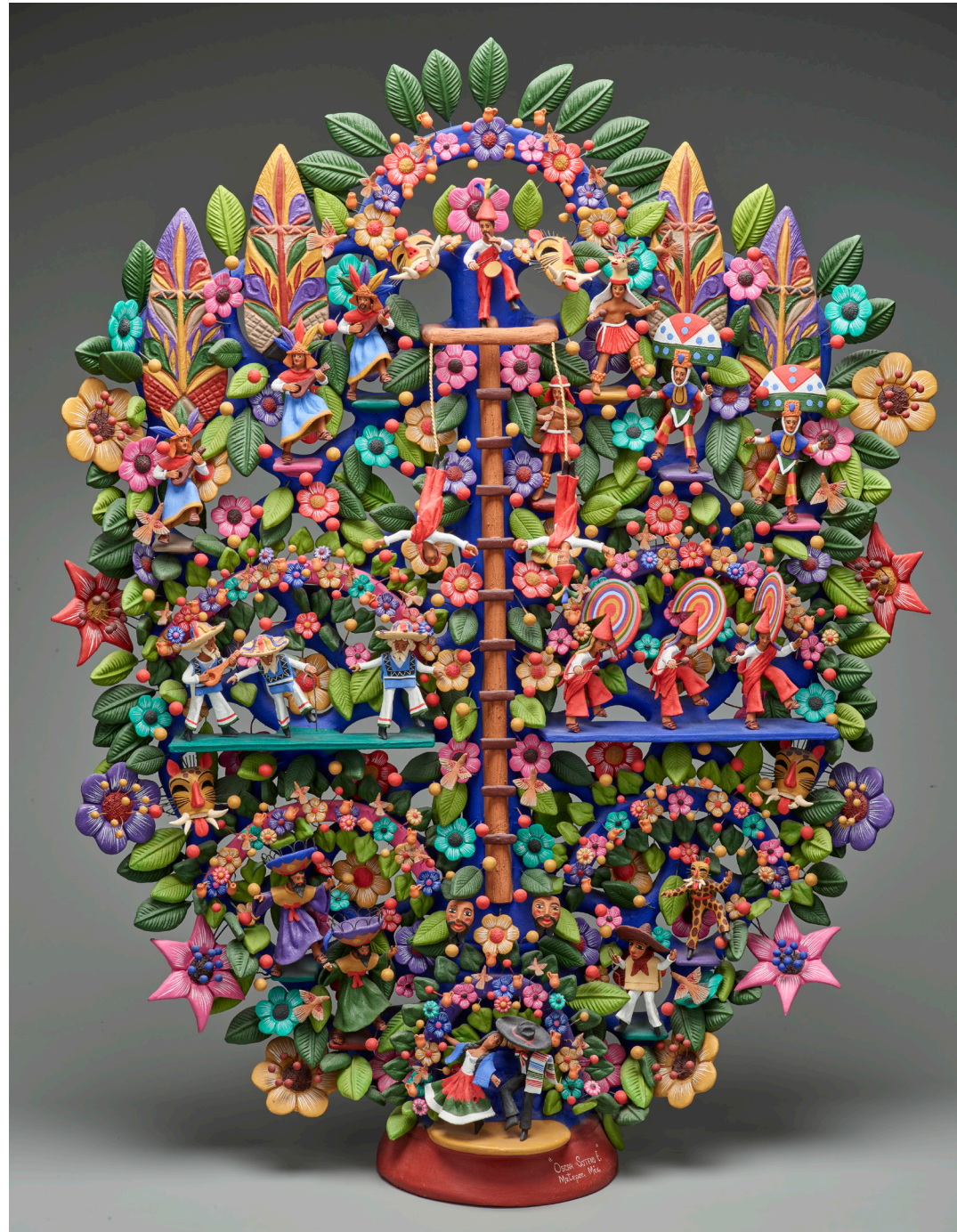
Mother and Child

Modeled 1915, cast posthumously 1928

Bronze

Gift of Cornelia and Ralph Heins in honor of Elinor Heins, 2021.32.18

ACQUISITION HIGHLIGHTS
LATIN AMERICAN ART



OSCAR SOTEÑO ELÍAS

Tree of Dances

About 1997

Modeled, molded, incised, and polychromed earthenware

Gift of Linda Marcus, 2021.52.16



LEONORA CARRINGTON

Under the Compass Rose

April 1955

Oil on canvas

The Eugene and Margaret McDermott Art Fund, Inc., 2022.22.McD

© Leonora Carrington / Artists Rights Society (ARS), New York



NICOLÁS DE CORREA
Baptism of Christ
About 1696
Oil on panel
General Acquisitions Fund, 2022.33



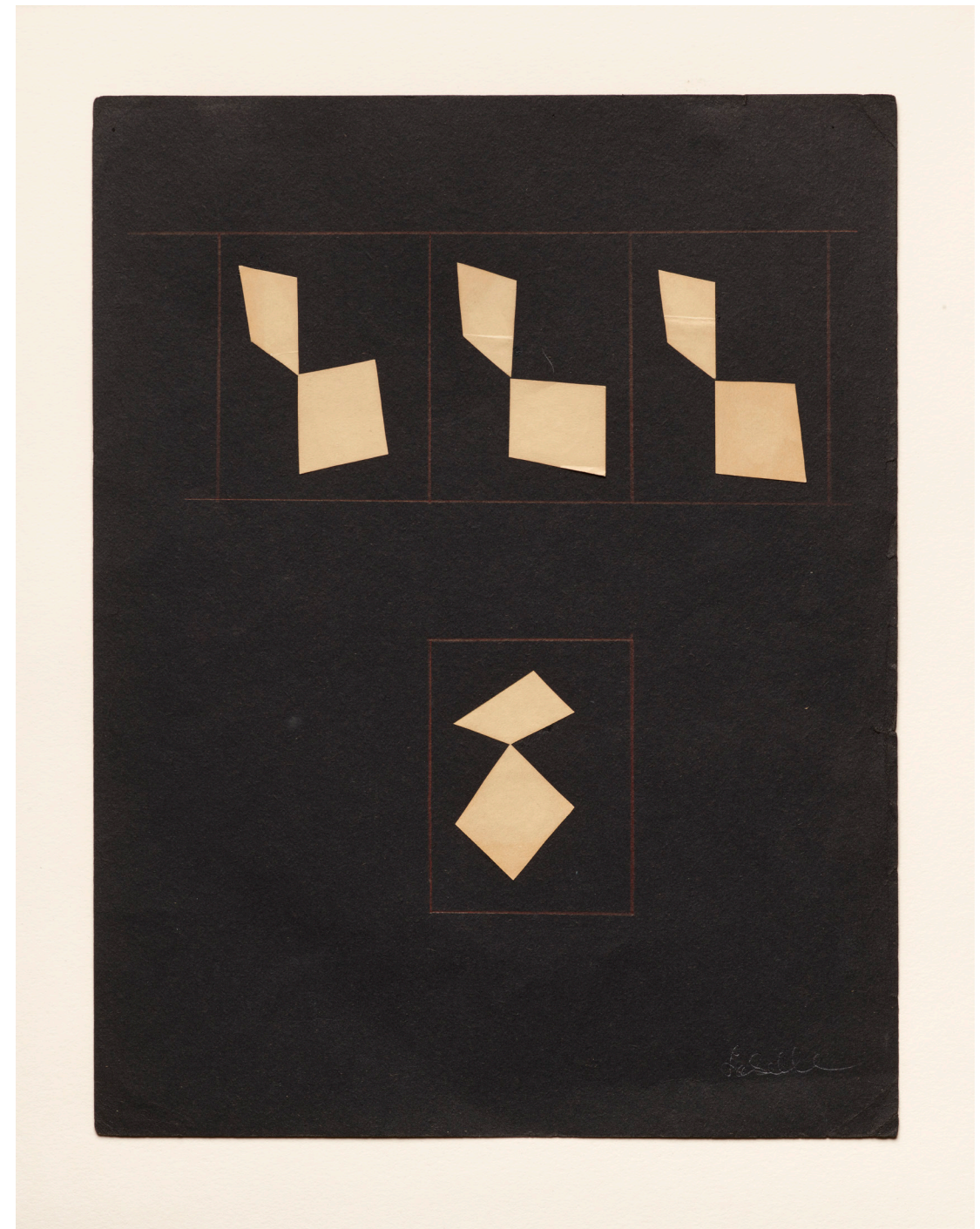
ERICH HECKEL
White Horses
1912
Colored woodprint
Gift of Cornelia and Ralph Heins in honor of Elinor Heins, 2021.32.4
© 2023 Artists Rights Society (ARS), New York / VG Bild-Kunst, Bonn



OTTO DIX
Circus Rider on the Stage

1923
Watercolor

Gift of Cornelia and Ralph Heins in honor of Elinor Heins, 2021.32.3
© 2023 Artists Rights Society (ARS), New York / VG Bild-Kunst, Bonn



DOROTHY ANTOINETTE (TONI) LASELLE
Early Space Plane Exercises (one of seven)

1941

Colored pencil and collage on paper

Janet Kendall Forsythe Fund in honor of Janet Kendall Forsythe on behalf
of the Earl A. Forsythe Family, 2021.34.2

Courtesy The Dorothy Antoinette LaSelle Foundation and Inman Gallery

AFRICAN ART

The following 84 works are gifts of the Estate of John Lunsford.

<p>CHAMBA PEOPLES; NIGERIA Top of Stake 1900–2000 Wood 10 1/4 × 2 3/4 × 2 3/4 in. 2021.43.19</p>	<p>WINIAMA PEOPLES; BURKINA FASO Male Figure 1900–2000 Wood 7 3/4 × 1 1/2 × 1 7/8 in. 2021.43.25</p>	<p>BIJOGO PEOPLES; GUINEA BISAU Ladle 1900–2000 Wood 25 × 9 1/2 × 6 1/4 in. 2021.43.31</p>	<p>YORUBA PEOPLES; NIGERIA Agere Ifa 1900–2000 Wood 6 1/8 × 5 1/2 × 5 in. 2021.43.37</p>	<p>YORUBA PEOPLES; NIGERIA Coiffure Sign Board 1900–2000 Masonite and paint 26 × 11 1/8 × 1/8 in. 2021.43.43</p>	<p>ASANTE PEOPLES; GHANA Comb 1900–2000 Wood 8 5/8 × 3 × 5/16 in. 2021.43.49</p>
<p>BASSA PEOPLES; LIBERIA Janus-Head Handpiece 1900–2000 Wood 4 × 1 1/4 × 1 1/4 in. 2021.43.20</p>	<p>EDO PEOPLES; NIGERIA Face Mask 1900–2000 Wood 11 1/2 × 5 1/2 × 3 1/4 in. 2021.43.26</p>	<p>KEREWE PEOPLES; TANZANIA Zither 1900–2000 Wood 25 3/16 × 2 1/4 × 7/8 in. 2021.43.32</p>	<p>OGONI PEOPLES (?); NIGERIA Dance Headdress 1900–2000 Wood 21 1/4 × 5 7/8 × 7 1/4 in. 2021.43.38</p>	<p>AFIKPO PEOPLES; NIGERIA Mba Mask 1900–2000 Wood 13 1/8 × 6 1/2 × 4 3/8 in. 2021.43.44</p>	<p>LOBI PEOPLES; BURKINA FASO Female Figure 1900–2000 Wood 27 × 4 3/4 × 5 1/4 in. 2021.43.50</p>
<p>CHOKWE PEOPLES; ANGOLA Katoyo Mask 1900–2000 Wood and other materials 13 1/4 × 8 1/2 × 9 1/2 in. 2021.43.21</p>	<p>ASANTE PEOPLES; GHANA Figure with Rifle 1900–2000 Wood 14 1/2 × 4 1/2 × 4 3/4 in. 2021.43.27</p>	<p>ZARAMO PEOPLES; TANZANIA Calabash with Figure 1900–2000 Wood 12 × 3 × 3 in. 2021.43.33.A–B</p>	<p>KAMBA PEOPLES (?); KENYA Staff 1900–2000 Wood 31 1/2 × 1 1/4 × 1 1/8 in. 2021.43.39</p>	<p>IGBO PEOPLES; NIGERIA Agiriga Mask 1900–2000 Wood 14 7/8 × 5 1/4 × 3 5/8 in. 2021.43.45</p>	<p>LOBI PEOPLES; BURKINA FASO Male Figure 1900–2000 Wood 26 × 4 3/4 × 5 3/4 in. 2021.43.51</p>
<p>IDOMA PEOPLES; NIGERIA Dance Headcrest 1900–2000 Wood and paint 11 1/2 × 5 1/4 × 6 1/2 in. 2021.43.22</p>	<p>AMBO PEOPLES; ANGOLA Doll 1900–2000 Wood and beads 17 × 6 × 5 1/8 in. 2021.43.28</p>	<p>ASANTE PEOPLES; GHANA Weaving Sword 1900–2000 Wood 11 1/4 × 1 3/4 × 1 in. 2021.43.34</p>	<p>ZARAMO PEOPLES; TANZANIA Doll 1900–2000 Wood 5 1/8 × 1 5/8 × 1 7/8 in. 2021.43.40</p>	<p>BAMANA PEOPLES; MALI Lock and Bolt 1900–2000 Wood 20 × 15 3/4 × 2 7/8 in. 2021.43.46</p>	<p>LOBI PEOPLES; BURKINA FASO Female Figure 1900–2000 Wood 27 3/4 × 7 × 7 1/4 in. 2021.43.52</p>
<p>SANAGA PEOPLES; CAMEROON Guardian Figure 1800–2000 Wood and seeds 16 1/2 × 6 × 5 3/4 in. 2021.43.23</p>	<p>DOGON PEOPLES; MALI White Monkey Mask 1900–2000 Wood 13 1/4 × 5 1/4 × 5 in. 2021.43.29</p>	<p>BONGO PEOPLES (?); SOUTH SUDAN Standing Male Figure 1900–2000 Wood 21 1/4 × 4 1/8 × 4 in. 2021.43.35</p>	<p>IGBO PEOPLES; NIGERIA Ikenga 1900–2000 Wood 11 3/8 × 4 1/4 × 3 1/2 in. 2021.43.41</p>	<p>FANTÉ PEOPLES; GHANA Female Figure 1900–2000 Wood 13 × 3 3/4 × 2 in. 2021.43.47</p>	<p>LOBI PEOPLES; BURKINA FASO Male Figure 1900–2000 Wood 15 1/2 × 2 7/8 × 3 1/8 in. 2021.43.53</p>
<p>LOBI PEOPLES; BURKINA FASO Dance Staff 1900–2000 Wood 19 1/2 × 8 1/4 × 3 11/16 in. 2021.43.24</p>	<p>BAMANA PEOPLES; MALI Pole Finial 1900–2000 Wood 4 1/2 × 13 × 4 1/2 in. 2021.43.30</p>	<p>ZULU PEOPLES; SOUTH AFRICA Staff Top 1920–2000 Wood 28 1/2 × 2 1/8 × 1 7/8 in. 2021.43.36</p>	<p>IGBO PEOPLES; NIGERIA Ikenga 1900–2000 Wood 8 1/4 × 5 × 3 1/8 in. 2021.43.42</p>	<p>SENUFO PEOPLES; CÔTE D'IVOIRE Textile 1900–2000 Cotton 47 1/2 × 91 3/4 in. 2021.43.48</p>	<p>LOBI PEOPLES; BURKINA FASO Male Figure 1900–2000 Wood 16 × 2 5/8 × 3 in. 2021.43.54</p>

AFRICAN ART

LOBI PEOPLES;
BURKINA FASO
Female Figure
1900–2000
Wood
21 1/8 × 3 × 3 1/4 in.
2021.43.55

LOBI PEOPLES;
BURKINA FASO
Female Figure
1900–2000
Wood
8 1/2 × 1 7/8 × 2 in.
2021.43.56

LOBI PEOPLES;
BURKINA FASO
Seated Figure
1900–2000
Wood
6 1/2 × 4 1/4 × 1 3/8 in.
2021.43.57

LOBI PEOPLES;
BURKINA FASO
Female Figure
1900–2000
Wood
6 7/8 × 2 1/4 × 1 7/8 in.
2021.43.58

ANGAS PEOPLES; NIGERIA
Male Figure
1900–2000
Wood
20 1/8 × 4 3/4 × 4 3/8 in.
2021.43.59

YORUBA PEOPLES;
NIGERIA
Ancestor Headdress
1900–2000
Wood
15 3/4 × 6 7/8 × 9 3/4 in.
2021.43.60

YORUBA PEOPLES;
NIGERIA
Male Ibeji Figure
1900–2000
Wood
8 3/4 × 3 1/4 × 2 1/2 in.
2021.43.61.1

YORUBA PEOPLES;
NIGERIA
Female Ibeji Figure
1900–2000
Wood
9 × 3 3/8 × 2 in.
2021.43.61.2

YORUBA PEOPLES;
NIGERIA
Ere Ibeji
1900–2000
Wood
10 3/4 × 2 7/8 × 3 1/2 in.
2021.43.62

YORUBA PEOPLES;
NIGERIA
Male Ibeji Figure
1900–2000
Wood
11 3/8 × 3 1/2 × 4 in.
2021.43.63

LOBI PEOPLES;
BURKINA FASO
Female Figure
1900–2000
Wood
18 13/16 × 3 3/8 × 3 3/8 in.
2021.43.64

OGONI PEOPLE; NIGERIA
Mask
1900–2000
Wood
7 3/4 × 4 1/4 × 3 1/2 in.
2021.43.65

YORUBA PEOPLES;
NIGERIA
Edan Ogboni
1900–2000
Brass
15 5/8 × 1 5/8 × 1 3/4 in.
2021.43.66

SENUFO PEOPLES (?);
CÔTE D'IVOIRE
Male Equestrian
1900–2000
Copper alloy
3 1/8 × 2 1/2 × 5/8 in.
2021.43.67

DOGON PEOPLES; MALI
Pin with Horse and Rider
1900–2000
Brass
7 3/4 × 2 1/2 × 1/2 in.
2021.43.68

DOGON PEOPLES; MALI
Equestrian Group
1900–2000
Wrought iron
6 3/8 × 5 5/8 × 1 1/8 in.
2021.43.69

BAMANA PEOPLES; MALI
Equestrian Figure with Spear
1900–2000
Wrought iron
11 × 11 1/4 × 5 in.
2021.43.70

BURKINA FASO
Pendant
1900–2000
Brass
1 7/8 × 3 3/8 × 1 3/4 in.
2021.43.71

SENUFO PEOPLES;
CÔTE D'IVOIRE
Horse and Rider
1900–2000
Brass
3 3/8 × 2 7/8 × 7/8 in.
2021.43.72

SENUFO PEOPLES;
CÔTE D'IVOIRE
Horse and Rider
1900–2000
Brass
3 3/8 × 3 3/4 × 1 in.
2021.43.73

MALI
Ring
1900–2000
Copper alloy
3 1/2 × 2 1/2 × 1 3/8 in.
2021.43.74

MALI
Ring
1900–2000
Copper alloy
3 1/4 × 2 1/4 × 1 1/2 in.
2021.43.75

NUNA/BWA PEOPLES;
BURKINA FASO
Pectoral Pendant
1900–2000
Copper alloy
2 1/2 × 3 1/4 × 1 1/8 in.
2021.43.76

BOBO PEOPLES (?);
BURKINA FASO
Pendant
1900–2000
Brass
3 3/4 × 1 1/4 × 1/16 in.
2021.43.77

GAN PEOPLE (?);
BURKINA FASO
Pendant
1900–2000
Copper alloy
3 × 2 3/4 × 3/8 in.
2021.43.78

GAN PEOPLE (?);
BURKINA FASO
Pendant
1900–2000
Copper alloy
5 × 4 1/2 × 1/4 in.
2021.43.79

GAN PEOPLE (?);
BURKINA FASO
Pendant
1900–2000
Copper alloy
4 3/4 × 1 7/8 × 3/8 in.
2021.43.80

ASANTE PEOPLES; GHANA
Goldweight
1900–2000
Brass
1 3/4 × 1 1/4 × 1 1/4 in.
2021.43.81

YORUBA PEOPLES; NIGERIA
Ogboni Society Bracelet
1900–2000
Brass
3 3/8 × 3 3/8 × 1 1/8 in.
2021.43.82

BOBO PEOPLES (?);
BURKINA FASO
Pendant
1900–2000
Brass
4 3/4 × 1 5/8 × 1/4 in.
2021.43.83

SENUFO PEOPLES;
CÔTE D'IVOIRE
Female Figure
1900–2000
Brass
2 × 1 × 1/2 in.
2021.43.84

SENUFO PEOPLES;
CÔTE D'IVOIRE
Male Figure
1900–2000
Brass
2 1/2 × 1 1/8 × 1/2 in.
2021.43.85

DOGON PEOPLES; MALI
Seated Female Figure
1900–2000
Brass
4 1/8 × 2 1/8 × 1 1/4 in.
2021.43.86

DOGON PEOPLES; MALI
Kneeling Figure with Raised Arms
1900–2000
Brass
5 3/4 × 1 × 1 5/8 in.
2021.43.87

KULANGO PEOPLES; CÔTE D'IVOIRE
Pair of Figures
1900–2000
Brass
1 3/4 × 1 1/4 × 3/4 in.
2021.43.88

MALI
Seated Female Figure
1900–2000
Brass
2 1/8 × 1 × 3/4 in.
2021.43.89

AFRICAN ART

MALI
Seated Female Figure
 1900–2000
 Brass
 2 5/8 × 7/8 × 7/8 in.
 2021.43.90

MALI
Seated Figure Holding Object
 1900–2000
 Brass
 2 1/4 × 3/4 × 3/4 in.
 2021.43.91

MALI
Kneeling Male Figure
 1900–2000
 Brass
 1 3/4 × 1 1/8 × 3/4 in.
 2021.43.92

DOGON PEOPLES (?);
 MALI
Kneeling Figure
 1900–2000
 Wrought iron
 6 3/8 × 1 1/4 × 2 in.
 2021.43.93

DOGON PEOPLES; MALI
Standing Figure
 1900–2000
 Wrought iron
 5 1/2 × 1 3/4 × 1 in.
 2021.43.94
(Pictured on p. 69)

KIRDI PEOPLE; NIGERIA
Ceremonial Tongs
 1900–2000
 Iron and copper
 16 1/2 × 4 1/2 × 7/8 in.
 2021.43.95

SUDAN
Knife
 1900–2000
 Wood and steel
 16 × 1 5/8 × 1 5/8 in.
 2021.43.96

DOGON PEOPLES; MALI
Standing Masked Figure
 1900–2000
 Wrought iron
 8 1/8 × 2 5/8 × 2 1/2 in.
 2021.43.97

YORUBA PEOPLES (?);
 NIGERIA
Dance Rattle
 1900–2000
 Brass
 5 3/4 × 5 3/4 × 1 in.
 2021.43.98.1

YORUBA PEOPLES (?);
 NIGERIA
Dance Rattle
 1900–2000
 Brass
 5 3/4 × 5 3/4 × 7/8 in.
 2021.43.98.2

KRU PEOPLES; LIBERIA
Ring Currency
 1900–2000
 Bronze
 6 1/2 × 6 1/2 × 2 3/8 in.
 2021.43.99

DOGON PEOPLES; MALI
Ring
 1900–2000
 Bronze
 3 × 2 × 7/8 in.
 2021.43.100

YEMI BISIRI, YORUBA
 PEOPLES; NIGERIA
Ogboni Group Figure
 1960s
 Cast copper alloy
 12 1/4 × 4 3/4 × 2 7/8 in.
 African Collection Fund,
 2022.9

BAMANA PEOPLES; MALI
Hunter's Tunic
 1970–1979
 Cotton and natural dye
 27 x 53 in.
 Textile Purchase Fund,
 2022.10.1

BAMANA PEOPLES; MALI
Hunter's Tunic
 1970–1979
 Cotton and natural dye
 26 1/2 x 48 in.
 Textile Purchase Fund,
 2022.10.2

BAQQARA ARABS;
 MAHDIST STATES, SUDAN
Jibba or Jubba (Tunic)
 About 1898
 Undyed local cotton
 ground, patches of
 European cloth, and wool
 appliqué with imported
 thread
 37 1/8 × 51 5/8 in.
 Width: 37 in. (hem), 18 in.
 (chest)
 African Collection Fund,
 2022.43



ASIAN ART

CHINA
Plate with Crucifixion Scene
 1725–1775
 Porcelain, enamel, and gilt
 1 1/2 × 9 × 9 in.
 Gift of David T. Owsley in honor of Dr. Anne R. Bromberg, 2021.17

JAPAN, SEIBŌ KITAMURA
Plum Blossoms
 1931
 Ink on paper
 77 × 33 in.
 Gift of Barron U. Kidd, 2021.28

DESIGN AND DECORATIVE ART

TAPIO WIRKKALA, DESIGNER; ODILON MARMOLEJO SANCHEZ, SILVERSMITH; TANÉ, DISTRIBUTOR
Punch Bowl
 About 1975
 Sterling silver
 7 3/4 × 14 in. Diam.
 Discretionary Decorative Arts Fund, 2021.33

JOLAN VAN DER WIEL
Tropic Console
 2017
 Magnetized iron powder and resin
 31 1/2 × 59 × 19 3/4 in.
 Gift of the Pratt Institute, 2021.36

ELEANOR MOTY
Splinter Brooch
 1995
 Sterling silver, 22K gold, 18K gold, and rutilated quartz
 1 × 4 3/4 × 1/2 in.
 Gift of Deedie Potter Rose, 2021.46.1

FRANÇOISE VAN DEN BOSCH
Cushion Brooch
 1976 and 1993
 Aluminum
 2 1/4 × 2 1/4 × 1/2 in.
 Gift of Deedie Potter Rose, 2021.46.2

EARL PARDON
Brooch
 About 1990
 Metal, citrine, tourmaline, enamel, yellow gold, sterling silver, and 14K yellow gold
 1 7/8 × 2 1/4 × 14 in.
 Gift of Deedie Potter Rose, 2021.46.3

TERHI TOLVANEN
Wood Diary
 2019
 Rosemary, lavender, laurel, hazelnut, cherry, heather, rowan, birch, grape, thuja, old vine, sycamore, blackthorn, rose, corkscrew willow, corkscrew hazelnut, ivy, pear, niangon, hornbeam, apple, graphite, and silver
 47 1/8 × 2 1/2 × 1 1/4 in.
 Gift of Deedie Potter Rose, 2021.46.4.1

TERHI TOLVANEN
Wood Identities
 2019
 Silver
 23 × 7 × 1 1/2 in.
 Gift of Deedie Potter Rose, 2021.46.4.2

TONE VIGELAND
Necklace
 About 1976
 Sterling silver, coral, and citrine
 13 1/2 in. L.
 Gift of Deedie Potter Rose, 2021.46.5

HERBERT VON THADEN, DESIGNER; THADEN-JORDAN FURNITURE CORPORATION, MANUFACTURER
Chair
 About 1946
 Plywood and metal
 43 × 4 3/4 × 31 in.
 Gift of Deedie Potter Rose, 2021.46.6

The following 14 works are gifts of Dr. Alessandra Comini.

PAUL REVERE POTTERY OF THE SATURDAY EVENING GIRLS CLUB, MANUFACTURER
Yellow Calendar Holder with Landscape and Tree Decoration
 1917
 Earthenware with glaze and cuerda seca decoration
 3 1/2 × 3 1/2 × 2 in.
 2021.50.1

ROOKWOOD POTTERY, MANUFACTURER; CINCINNATI, OHIO
Low Vase in Matte Yellow
 1922
 Ceramic
 3 3/8 × 5 × 5 in.
 2021.50.2

ROOKWOOD POTTERY, MANUFACTURER; CINCINNATI, OHIO
Lotus Vase in Matte Yellow
 1929
 Ceramic
 4 1/2 × 3 1/2 × 3 1/2 in.
 2021.50.3

ROOKWOOD POTTERY, MANUFACTURER; CINCINNATI, OHIO
Tri-Handled Vase in Matte Yellow
 1921
 Ceramic
 8 5/8 × 3 1/2 × 3 1/2 in.
 2021.50.4

VAN BRIGGLE POTTERY, MANUFACTURER; COLORADO SPRINGS, COLORADO
Vase with Stylized Flowers and Leaves
 1911
 Ceramic
 10 3/4 in. H.
 2021.50.5

FRANCOIS-RAOUL LARCHE
Art Nouveau Three-Lobe Tray of Nympe on Lily Pad
 About 1905
 Bronze
 4 × 13 1/2 × 12 in.
 2021.50.6

TIFFANY STUDIOS, MANUFACTURER; CORONA, NEW YORK
Pen Tray in Grapevine Pattern
 About 1910
 Bronze and glass
 9 1/2 × 2 3/4 in.
 2021.50.7

TIFFANY STUDIOS, MANUFACTURER; CORONA, NEW YORK
Inkwell in Grapevine Pattern
 About 1910
 Bronze dore and slag glass
 3 1/4 × 3 1/4 × 3 1/4 in.
 2021.50.8

TIFFANY STUDIOS, MANUFACTURER; CORONA, NEW YORK
Letter Tray in Grapevine Pattern
 About 1910
 Bronze dore and slag glass
 10 × 2 3/8 × 6 1/4 in.
 2021.50.9

TIFFANY STUDIOS, MANUFACTURER; CORONA, NEW YORK
Collapsible Bookends in Grapevine Pattern
 About 1910
 Bronze dore and slag glass
 6 × 6 3/8 × 14 1/4 in. (expands to 19 in.)
 2021.50.10

APOLLO STUDIOS, MANUFACTURER; NEW YORK, NEW YORK
Pen Holder in Magnolia Pattern
 About 1910–1920
 Verdigris bronze and green glass
 4 × 3 5/8 × 3 5/8 in.
 2021.50.11

DESIGN AND DECORATIVE ART

GRUEBY FAIENCE COMPANY,
MANUFACTURER; BOSTON,
MASSACHUSETTS

Scarab Paperweight

About 1904
Ceramic
1 3/4 x 2 3/4 x 4 in.
2021.50.12

GRUEBY FAIENCE COMPANY,
MANUFACTURER; BOSTON,
MASSACHUSETTS

Vase

1900–1902
Ceramic
5 3/4 x 6 1/2 x 6 1/2 in.
2021.50.13

ROSENTHAL PORZELLAN
AG, MANUFACTURER; SELB,
GERMANY

Arts and Crafts Bulb Vase with Landscape

1900–1925
Ceramic
8 x 5 1/2 x 5 1/2 in.
2021.50.14

GAE AULENTI, DESIGNER;
MARTINELLI LUCE,
MANUFACTURER

"Pipistrello" Lamp

1965
Lacquered aluminum,
stainless steel, and Perspex
26 1/2 x 21 1/2 x 21 1/2 in.
Gift of Jewel Stern in Honor
of Sherry Hayslip and Cole
Smith, 2021.51.A–C

NANCY WORDEN
Doorknob Locket Brooch
1972

Silver and semiprecious
stones
1 1/2 x 3/4 x 3/4 in.
Gift of the Estate of Nancy
Worden, 2021.53.1

NANCY WORDEN
**I've Been Everywhere
Necklace**
1998

Silver, copper, and nickel
10 x 11 x 1/2 in.
Gift of the Estate of Nancy
Worden, 2021.53.2

JOHN LORING, DESIGNER;
TIFFANY & COMPANY,
MANUFACTURER; NEW
YORK, NEW YORK

"Tread Plate" Box

Designed 1980
Silver
3 3/8 x 10 1/2 x 7 1/8 in.
Gift of the designer,
2021.56

TED NOTEN
21 Necklace
2011

Nylon connections, 3D
print/drivers elements cast
in acrylic; computer parts,
jewelry parts, 8mm film
parts, electric components,
plugs, etc., cast in acrylic
connected with 3D-printed
nylon
21 1/4 x 12 1/2 in.
Gift of Catherine and
William E. Rose, 2022.5

ROBERTO LUGO
Erykah Badu Vessel
2021

Glazed ceramic
25 1/4 x 22 x 23 in.
Discretionary Decorative
Arts Fund, 2022.24

ARATA FUCHI
Devastator Brooch
2021

Silver, gold, copper,
shibuichi, and palladium
3 1/8 x 3 1/8 x 5/8 in. WO
x TWO for AIDS and Art
Fund for Wearable Art,
2022.25
*(Pictured on p. 73,
© Arata Fuchi)*

MALLORY WESTON
**Anthurium Wormhole
Necklace #1**
2021

Anodized titanium, leather,
polyester, and cotton
28 1/2 x 6 1/4 x 3 1/4 in.
TWO x TWO for AIDS and
Art Fund for Wearable Art,
2022.43.A–C

TAISHA CARRINGTON
Waves (Hair Brooches)
2021

Crushed West Indian wilks
shell (snail), resin, brass,
and silver
Dimensions variable
Discretionary Decorative
Arts Fund, 2022.47.A–B



EUROPEAN ART

ERNST BARLACH

Flute Player

Modeled 1936, cast about 1936

Bronze

23 × 14 × 9 in.

Gift of Cornelia and Ralph Heins in honor of Elinor Heins, 2021.32.1

EUGÈNE-LOUIS BOUDIN

Open Sea

1889

Oil on canvas

Framed: 23 1/4 × 28 3/4 × 2 in.

Gift of Cornelia and Ralph Heins in memory of Elinor Heins, 2021.32.5

GEORGE HITCHCOCK

Field of Hyacinths

Late 1880s

Oil on canvas

Framed: 23 3/4 × 28 1/2 × 2 1/4 in.

Gift of Cornelia and Ralph Heins in honor of Elinor Heins, 2021.32.6

AUGUST MACKE

August, Lake of Thun

About 1913–1934

Pastel on paper

5 1/2 × 3 5/8 in.

Gift of Cornelia and Ralph Heins in honor of Elinor Heins, 2021.32.10

AUGUST MACKE

August, Hat Shop

1914

Pastel on paper

5 1/2 × 3 1/8 in.

Gift of Cornelia and Ralph Heins in honor of Elinor Heins, 2021.32.11

EDVARD MUNCH

View from Hisøya Near

Arendal

1886

Oil on canvas

16 1/4 × 24 5/8 in.

Gift of Cornelia and Ralph Heins in honor of Elinor Heins, 2021.32.12

PIERRE-AUGUSTE RENOIR
AND RICHARD GUINO

Mother and Child

Modeled 1915, cast

posthumously 1928

Bronze

21 1/4 × 10 × 12 3/4 in.

Gift of Cornelia and Ralph Heins in honor of Elinor Heins, 2021.32.18

BARTOLOMEO MANFREDI

A Bravo Figure

About 1605

Oil on canvas

36 × 28 in.

Marguerite and Robert Hoffman Fund and gift of James Sight, 2022.26

ATTRIBUTED TO RICHARD
PARKES BONINGTON

**Untitled (Landscape with
Cottage)**

About 1820s

Oil on canvas

9 1/2 × 13 × 3/4 in.

Gift of Dr. Cecilia Valdes and Kenneth H. White, 2022.32.1

ATTRIBUTED TO RICHARD
PARKES BONINGTON

**Untitled (Coastal
Landscape)**

About 1820s

Oil on panel

8 7/8 × 13 7/8 × 1/4 in.

Gift of Dr. Cecilia Valdes and Kenneth H. White, 2022.32.2

LUIS RICARDO FALERO

**Woman in a Harem
Courtyard**

1875

Oil on canvas

23 1/2 × 28 1/2 × 1 in.

Gift of Dr. Cecilia Valdes and Kenneth H. White, 2022.32.3

(Pictured on p. 75)

JOSHUA HARGRAVE SAMS
MANN

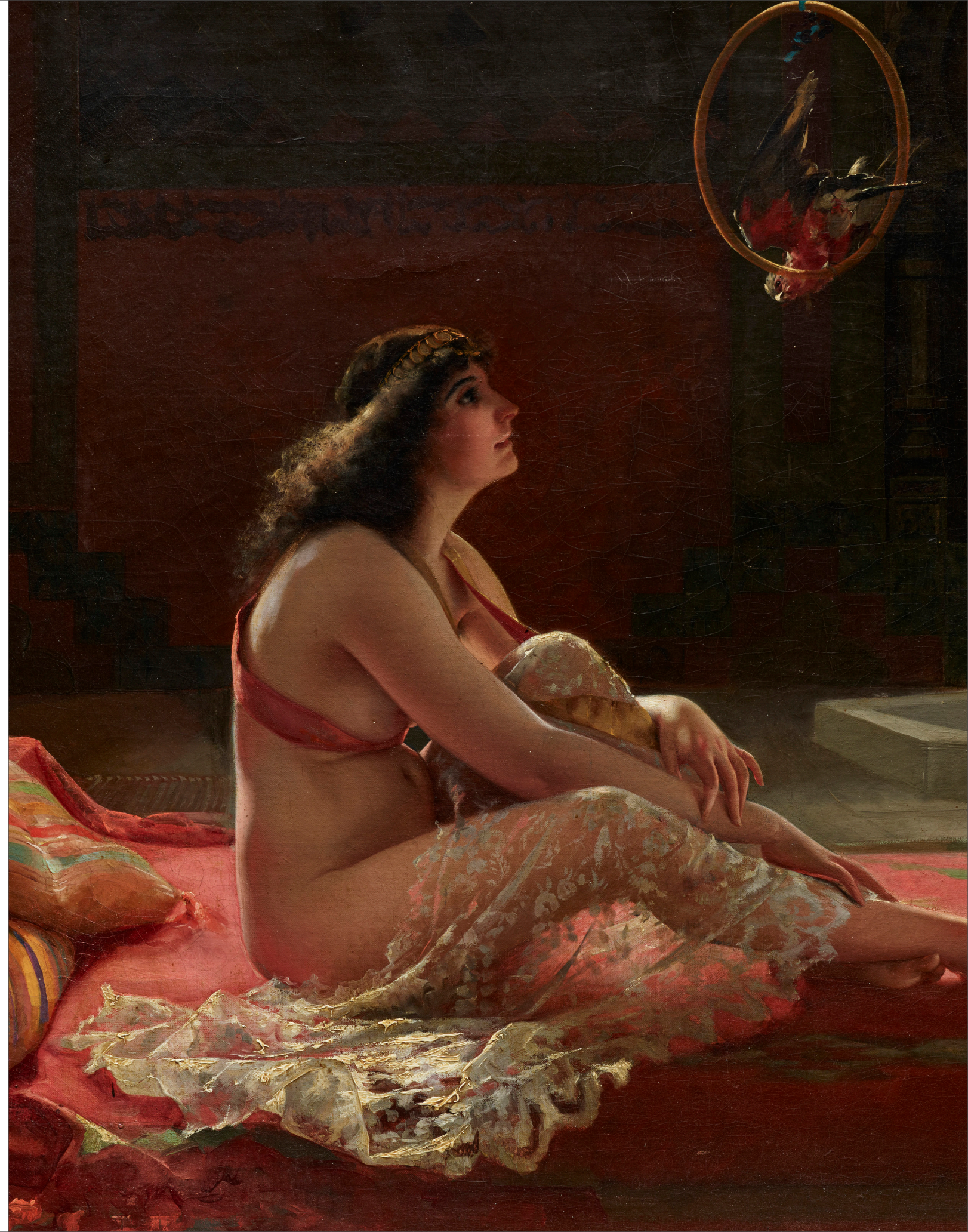
A Nonsuit

1859

Oil on panel

9 1/4 × 11 1/2 × 1/8 in.

Gift of Dr. Cecilia Valdes and Kenneth H. White, 2022.32.4



INDIGENOUS AMERICAN ART

JALISCO, MEXICO

Seated Women

300 BCE–300 CE

Ceramic and pigment

19 × 12 1/2 × 12 in.

The Otis and Velma Davis

Dozier Fund, 2021.26

MARIA MARTINEZ AND
POPOVI DA

Jar with Feather Design

1964

Ceramic

6 × 7 1/2 × 7 1/2 in.

Gift of Pamela B. Mitchell

and Jere H. Mitchell, MD,

2021.39

*The following 20 works
are gifts of Estate of John
Lunsford.*

TAIRONA, COLOMBIA

Quadripod Vessel with

Four Snake Heads

About 1300–1600 CE

Ceramic

1 3/4 × 2 3/8 × 1 1/2 in.

2021.43.101

NICOYA REGION,
GUANACASTE, COSTA
RICA

Turtle Tripod Vessel

About 200–500 CE

Ceramic and pigment

5 × 8 3/4 × 8 in.

2021.43.102

NICOYA REGION,
GUANACASTE, COSTA
RICA

Jaguar Effigy Vessel

About 800–1200 CE

Ceramic and pigment

14 1/2 × 7 3/4 × 9 3/4 in.

2021.43.103

NICOYA REGION,
GUANACASTE, COSTA
RICA

Double-Headed Alligator

Lidded Incense Burner

About 600–1100 CE

Ceramic and pigment

13 3/8 × 9 1/8 × 7 1/4 in.

2021.43.104

LINEA VIEJA, COSTA RICA

Zoomorphic Tripod Bowl

About 800–1525 CE

Ceramic and pigment

5 1/4 × 8 1/2 × 8 1/2 in.

2021.43.105

CHUPICUARO, MEXICO

Head Effigy Bowl

500–100 BCE

Ceramic and pigment

4 3/4 × 9 3/4 × 9 1/2 in.

2021.43.106

CHUPICUARO, MEXICO

Head Effigy Bowl

500–100 BCE

Ceramic and pigment

2 5/8 × 4 × 4 in.

2021.43.107

CHUPICUARO, MEXICO

Tripod Bowl with

Geometric Design

500–100 BCE

Ceramic and pigment

4 × 5 3/8 × 5 3/8 in.

2021.43.108

COLIMA, MEXICO

Dog with Tail Spout

200 BCE–100 CE

Ceramic and pigment

10 × 15 × 7 5/8 in.

2021.43.109

COLIMA, MEXICO

Standing Warrior or

Ballplayer

Date unknown

Ceramic

9 1/2 × 5 × 1 1/2 in.

2021.43.110

COLIMA, MEXICO

Standing Woman with

Turban and Dress

Date unknown

Ceramic and pigment

8 1/2 × 4 × 1 1/4 in.

2021.43.111

JALISCO, MEXICO

Seated Woman

Date unknown

Ceramic and pigment

11 × 6 × 3 3/4 in.

2021.43.112

JALISCO OR MICHOACAN,
MEXICO

Bowl

300 BCE–300 CE

Ceramic and pigment

3 1/4 × 8 1/4 × 8 3/4 in.

2021.43.113

MAYA; JAINA ISLAND,
CAMPECHE, MEXICO

Turkey-Form Whistle

Date unknown

Ceramic

5 1/4 × 4 1/4 × 2 3/8 in.

2021.43.114



MAYA; JAINA ISLAND,
CAMPECHE, MEXICO

Turkey-Form Double-

Diaphragm Flute

650–850 CE

Ceramic and pigment

7 1/2 × 2 1/2 × 2 1/4 in.

2021.43.115

NAYARIT, MEXICO

Two-Lobe Bottle

Date unknown

Ceramic and pigment

4 1/2 × 5 1/2 × 5 1/2 in.

2021.43.116

CHAVÍN

Engraved Shell

700–500 BCE

Shell

3 3/4 × 2 5/8 × 2 1/8 in.

2021.43.117

ANITA LOWDEN, ACOMA
PUEBLO; NEW MEXICO

Black-and-White Cylindrical

Vase with Triangle Motif

Date unknown

Ceramic

4 1/2 × 3 5/8 × 3 7/8 in.

2021.43.118

ACOMA PUEBLO; NEW
MEXICO

Bowl with Impressed

Triangle Motif

Date unknown

Ceramic

3 3/8 × 5 3/4 × 5 3/4 in.

2021.43.119

LUCY M. LEWIS, ACOMA
PUEBLO; NEW MEXICO

Turkey Effigy

Date unknown

Ceramic and pigment

4 1/8 × 4 × 4 1/4 in.

2021.43.120

(Pictured above)

LATIN AMERICAN ART

ERNESTINA MAMBORA (?)
Basket, Tree of Life
 1980–2008
 Natural fibers and dyes
 6 5/8 × 8 × 8 in.
 Gift of the Estate of John
 Lunsford, 2021.43.10

MANUEL JIMÉNEZ
 RAMÍREZ
Nagual
 1950–2000
 Wood (copalillo), paint,
 and nails
 8 3/4 × 13 × 4 1/4 in.
 Gift of the Estate of John
 Lunsford, 2021.43.11

MANUEL JIMÉNEZ
 RAMÍREZ
Deer
 1950–2000
 Wood (copalillo), paint,
 and nails
 15 × 15 1/2 × 6 3/4 in.
 Gift of the Estate of John
 Lunsford, 2021.43.12

MEXICO (?)
Head of Christ
 1800–1910
 Wood, cloth, gesso, glue,
 bone, and paint
 18 × 10 3/4 × 5 in.
 Gift of the Estate of John
 Lunsford, 2021.43.13

MEXICO
Jaguar Mask
 1900–1970
 Wood, paint, glass, teeth,
 and wild boar bristle
 14 × 11 3/4 × 8 3/4 in.
 Gift of the Estate of John
 Lunsford, 2021.43.14

MEXICO
Jaguar Dancer Figure
 1980–2008
 Wood, corn husk, rope,
 and paint
 10 1/2 × 6 × 5 in.
 Gift of the Estate of John
 Lunsford, 2021.43.15

MEXICO
Mask
 1900–1979
 Wood and paint
 12 1/4 × 8 1/2 × 6 1/4 in.
 Gift of the Estate of John
 Lunsford, 2021.43.16

MEXICO
Bowl
 1900–1975
 Gourd and paint
 2 3/8 × 13 1/2 × 13 1/2 in.
 Gift of the Estate of John
 Lunsford, 2021.43.17

PERU
Kero
 1700–1850
 Wood and paint
 7 3/4 × 6 1/4 × 6 1/4 in.
 Gift of the Estate of John
 Lunsford, 2021.43.18

*The following 20 works are
 gifts of Linda Marcus.*

HERÓN MARTINEZ
 MENDOZA
Holy Family on Horseback
 About 1970
 Burnished and incised
 earthenware and wire
 12 x 6 x 10 in.
 2021.52.1
(Pictured on p. 81)

HERÓN MARTINEZ
 MENDOZA
Tree of Life
 About 1960
 Polychromed earthenware
 25 x 14 x 13 3/4 in.
 2021.52.2

CANDELARIO MEDRANO
 LÓPEZ
Tower
 About 1960–1975
 Polychromed earthenware
 and wire
 45 x 8 x 5 3/4 in.
 2021.52.3

CANDELARIO MEDRANO
 LÓPEZ
Building
 About 1960–1975
 Polychromed earthenware
 and wire
 12 1/2 x 7 1/2 x 6 3/4 in.
 2021.52.4

CANDELARIO MEDRANO
 LÓPEZ
Building
 About 1960–1975
 Polychromed earthenware
 and wire
 9 1/2 x 5 1/4 x 4 in.
 2021.52.5

CANDELARIO MEDRANO
 LÓPEZ
Carousel Building
 About 1960–1975
 Polychromed earthenware
 and wire
 27 x 10 x 10 in.
 2021.52.6

CANDELARIO MEDRANO
 LÓPEZ
Building
 About 1960–1975
 Polychromed earthenware
 and wire
 23 1/2 x 7 x 5 1/2 in.
 2021.52.7

CANDELARIO MEDRANO
 LÓPEZ
**Ark with Passengers
 and Flags**
 About 1960–1975
 Polychromed earthenware
 and wire
 25 x 18 x 6 1/2 in.
 2021.52.8

ROSENDO RODRÍGUEZ
Pottery Vendor
 About 1960–1975
 Polychromed clay and wire
 14 1/2 x 9 x 17 1/2 in.
 2021.52.9

ROSENDO RODRÍGUEZ
**Horse with Figures on
 Horseback**
 About 1960–1975
 Polychromed clay and wire
 18 x 11 x 17 1/2 in.
 2021.52.10

ROSENDO RODRÍGUEZ
Cow with Leaves and Figures
 About 1960–1975
 Polychromed clay and wire
 12 3/4 x 9 x 17 1/2 in.
 2021.52.11

ATTRIBUTED TO IRMA
 GARCÍA BLANCO
**Woman with Bird Jar
 on Her Head**
 About 1985
 Modeled earthenware with
 earthenware appliquéés
 38 1/2 x 14 in.
 2021.52.12

ATTRIBUTED TO IRMA
 GARCÍA BLANCO
Female Figure
 About 1985
 Modeled earthenware with
 earthenware appliquéés
 35 x 15 in.
 2021.52.13

TEODORA BLANCO NÚÑEZ
Four Animal Creature
 About 1965
 Modeled earthenware with
 earthenware appliquéés
 25 x 10 in.
 2021.52.14

TEODORA BLANCO NÚÑEZ
Raccoon with Guitar
 About 1965
 Modeled earthenware with
 earthenware appliquéés
 21 x 9 1/2 in.
 2021.52.15

OSCAR SOTEÑO ELÍAS
Tree of Dances
 About 1997
 Modeled, molded,
 incised, and polychromed
 earthenware
 39 x 29 x 9 in.
 2021.52.16

SARA MÁRQUEZ GONZÁLEZ
The Nativity
 About 1990
 Woven and sewn fibers
 (panicua)
 13 x 15 x 12 1/4 in.
 2021.52.17

SARA MÁRQUEZ GONZÁLEZ
Market Scene
 About 1990
 Woven and sewn fibers
 (panicua)
 17 1/4 x 12 1/2 x 18 1/2 in.
 2021.52.18

AGUSTÍN CRUZ TINOCO
Mermaid Nativity
 About 2010
 Polychromed wood
 11 × 9 1/2 × 20 7/8 in.
 2021.52.19.A–H

HERÓN MARTINEZ
 MENDOZA
**Shepherd with Dogs Riding
 a Bull**
 About 1970
 Burnished and incised
 earthenware and wire
 24 x 14 x 11 in.
 2021.52.20

WOLFGANG PAALEN
The Immortal Remains
 1937
 Oil and fumage (candle
 smoke) on canvas panel
 13 x 9 3/8 in.
 The Eugene and Margaret
 McDermott Art Fund, Inc.,
 2022.21.McD

LATIN AMERICAN ART

LEONORA CARRINGTON

Under the Compass Rose

April 1955
Oil on canvas
21 7/8 × 13 1/8 in.
The Eugene and Margaret
McDermott Art Fund, Inc.,
2022.22.McD

BOLIVIA

Angel with Wheat Stalks

1675–1750
Oil on canvas
63 1/4 × 39 in.
The Cleofas and Celia de
la Garza Collection, gift of
Mary de la Garza-Hanna
and Virginia de la Garza,
2022.29.1

BOLIVIAN

**Christ at the Column with
a Mercedarian and Secular
Donor**

1600–1700
Oil on canvas
49 1/2 × 35 3/4 in.
The Cleofas and Celia de
la Garza Collection, gift of
Mary de la Garza-Hanna
and Virginia de la Garza,
2022.29.2

PERU

**The Christ Child with the
Thorn**

1675–1725
Oil on canvas
47 1/2 × 35 3/4 in.
The Cleofas and Celia de
la Garza Collection, gift of
Mary de la Garza-Hanna
and Virginia de la Garza,
2022.29.3

PERU

The Child Virgin Spinning

1675–1725
Oil on canvas
47 1/2 × 35 7/8 in.
The Cleofas and Celia de
la Garza Collection, gift of
Mary de la Garza-Hanna
and Virginia de la Garza,
2022.29.4

BOLIVIA OR PERU

**Our Lady of Mercy with
Devotees**

1675–1800
Oil on canvas
24 1/2 × 18 3/8 in.
The Cleofas and Celia de
la Garza Collection, gift of
Mary de la Garza-Hanna
and Virginia de la Garza,
2022.29.5

BOLIVIA

**Adoration of the Holy
Eucharist**

1700–1800
Oil on canvas
36 1/2 × 47 1/4 in.
The Cleofas and Celia de
la Garza Collection, gift of
Mary de la Garza-Hanna
and Virginia de la Garza,
2022.29.6

BOLIVIA

Mercedarian Saint

1700–1800
Oil on canvas
22 5/8 × 17 3/8 in.
The Cleofas and Celia de
la Garza Collection, gift of
Mary de la Garza-Hanna
and Virginia de la Garza,
2022.29.7

PERU OR MEXICO

**Virgin and Child with Child
Saint John the Baptist**

1675–1725
Oil on canvas
43 3/4 × 31 3/4 in.
The Cleofas and Celia de
la Garza Collection, gift of
Mary de la Garza-Hanna
and Virginia de la Garza,
2022.29.8

CARLOS MÉRIDA

**Untitled (from the Skies of
Texas Series)**

1943
Oil on canvas on Masonite
24 × 18 in.
Gift of Galería Arvil in
honor of Stanley Marcus,
2022.30

NICOLÁS DE CORREA

Baptism of Christ

About 1696
Oil on panel
39 × 50 × 3/4 in.
General Acquisitions Fund,
2022.33



OCEANIC ART

ONO NIHA PEOPLES;
CENTRAL NIAS ISLAND,
INDONESIA
Osa-Osa Si Sara Mbagi
(Commemorative Seat with
an Animal Head)
1850-1950
Stone
36 × 47 × 43 in.
Gift of Sally, William, Kris
and Risser Estes, 2021.61

POSTWAR AND CONTEMPORARY ART

KAZUYA SAKAI
Integrales II (Edgard
Varèse)
1979
Acrylic on canvas
55 1/2 × 55 1/2 in.
Lay Family Acquisition
Fund, 2021.18

FRANCE-LISE MCGURN
Big Easy
2020
Oil, acrylic, marker, and
spray paint on canvas
99 × 79 × 2 in.
Gift of Jonathan Cheung,
2021.19

SENGA NENGUDI
Water Composition I
1969-1970/2019
Heat-sealed vinyl and
colored water
58 × 80 × 71 in.
TWO x TWO for AIDS and
Art Fund, 2021.24

LAURA AGUILAR
Grounded #112
2006-2007, printed 2018
Archival pigment print
22 × 17 in.
Mary Margaret Munson
Wilcox Fund, 2021.25.1

LAURA AGUILAR
Untitled (from the
Grounded series)
2006-2007, printed 2018
Archival pigment print
22 × 17 in.
Mary Margaret Munson
Wilcox Fund, 2021.25.2

LAURA AGUILAR
Naomi (from the Latina
Lesbians series)
1989
Gelatin silver print
14 × 11 in.
Mary Margaret Munson
Wilcox Fund, 2021.25.3

LAURA AGUILAR
Julia (from the Latina
Lesbians series)
1990
Gelatin silver print
14 × 11 in.
Mary Margaret Munson
Wilcox Fund, 2021.25.4

IVONNE ACERO
ART HISTORY RE-
FORM-ACTION (under
construction)
2021
Repurposed book, C-clamp,
and tape
3 3/4 × 17 1/2 × 13 1/4 in.
Gift of Kaleta A. Doolin,
2021.27

MICHAEL CORRIS
Transformational Matrix I
1971
Emulsion on paper, steel
pins, acetate, and adhesive
Dimensions variable
Gift of Michael Corris,
2021.29.1

ART & LANGUAGE
MICHAEL CORRIS
Transformational Matrix II
1972
Acrylic on photoprint
mounted on board
36 × 40 in.
Gift of Michael Corris,
2021.29.2

ART & LANGUAGE
MICHAEL CORRIS
Transformational Matrix III
1972
Kodalith positive, photoprint
mounted on board, and
metal grommets
Framed: 23 1/4 × 34 3/4 ×
1 1/2 in.
Gift of Michael Corris,
2021.29.3

ART & LANGUAGE
MICHAEL CORRIS AND
ANDREW MENARD
Workbook
1974
Dimensions variable
Gift of Michael Corris,
2021.29.7.A-D

ART & LANGUAGE
MICHAEL CORRIS AND MEL
RAMSDEN, EDITORS; IAN
BURN, PRESTON HELLER,
ANDREW MENARD, JOSEPH
KOSUTH, AND MICHAEL
KRUGMAN
Blurting in Art & Language...
1973
Publication, A5
9 × 6 × 1/4 in.
Gift of Michael Corris,
2021.29.13

ART & LANGUAGE
The Organization of Culture
Under Workers' Self-
Management Socialism
1976
Original mechanicals ("paste-
ups") and accompanying
Kodalith negatives
15 × 15 in.
Gift of Michael Corris,
2021.29.15.A-J

EBECHO MUSLIMOVA
Fatebe Sister Booth A
2020
Enamel and oil paint on
Dibond aluminum
96 × 48 × 1 1/8 in.
Gift of the Green Family Art
Foundation, courtesy of
Adam Green Art Advisory,
2021.30

MARINA PEREZ SIMÃO
Untitled
2021
Oil on canvas
78 3/4 × 63 in.
Anonymous gift, 2021.35

HAIM STEINBACH
Avocado Slice
2018
Avocado slice
11 × 8 1/2 in.
Donated by the family of
Aaron Blake Simonton in his
honor and remembrance,
2021.37.8

GIORGIO GRIFFA
Verticale Rose
1977
Acrylic on canvas
16 1/2 × 28 3/8 in.
Gift of Charles Dee Mitchell,
2021.38.1

EVA LUNDSAGER
As Beginning
2000
Oil on canvas
Framed: 73 1/2 × 73 1/2 × 2 in.
Gift of Susan Mead, in
recognition of her daughter
Katya Jestin, 2021.40

ARELY MORALES
María
2017
Oil on canvas
66 1/8 × 59 5/8 × 2 1/2 in.
Charron and Peter Denker
Contemporary Texas Art
Fund, 2021.41

MARGARET MEEHAN
Sad Songs Say So Much
2020
Terracotta, porcelain,
magazine collage, and
wooden pedestal
15 × 22 × 16 in.
Laura and Walter Elcock
Contemporary Art Fund and
gift of Karen and John Reoch,
Rodney and Stacey Rogers,
The Klion Springwater Coven
Family Foundation, Inc.,
Betsy I. Carter, Michael
Wynne and Katherine Carter
Wynne, 2021.42.A-G

DAVID BATES
Flying Pelican
About 1981
Wood, paint, and nails
15 1/4 × 8 1/8 × 3 in.
Gift of the Estate of John
Lunsford, 2021.43.9

POSTWAR AND CONTEMPORARY ART

SAM GUMMELT
Untitled
1991
Mixed media on wood
48 × 38 in.
Bequest of Dorace M.
Fichtenbaum, 2021.47

NARI WARD
Iron Heavens II
1995
Oven pans, ironed
sterilized cotton, and burnt
wooden bats
Dimensions variable
The Rachofsky Collection
Acquisition Fund,
2021.48.A-C

PETER BRADLEY
**I Don't Wanna Be Kissed
(By Anyone But You)**
2019
Acrylic on canvas
42 × 86 in.
Gift of Claire and Brian
Gogel, 2021.54

SARAH CHARLESWORTH
**Yellow Action Painting
Photo #3**
2006
Polaroid
28 x 21 3/4 in.
Gift of Miyoung Lee,
2021.55

CHRISTOPHER WOOL
Untitled
2011
Silkscreen ink on linen
120 × 96 1/8 × 1 5/16 in.
Gift from Collection of
Marguerite Steed Hoffman,
2021.57

CALIDA RAWLES
In His Image
2021
Acrylic on canvas
47 3/4 × 60 × 2 in.
Gift of Marcia and
Jonathan Sobel, 2022.1

RAUL GUERRERO
**The Legend of the
Volcanoes**
1993-2018
Oil on linen
80 1/8 × 108 1/4 × 1 1/2 in.
Lay Family Acquisition
Fund, 2022.2

JOHNNY FLOYD
**Upon Reflection, I Am
Aphrodite's Pearls Strung
Across the Firmament**
2021
Oil, acrylic, and gold leaf
on canvas
24 × 36 × 1 1/4 in.
Dallas Art Fair Foundation
Acquisition Fund, 2022.3

CARRIE YAMAOKA
40 by 30 (black on black #2)
2021
Flexible urethane resin and
black vinyl on wood panel
40 1/4 × 30 1/8 × 2 1/8 in.
Dallas Art Fair Foundation
Acquisition Fund, 2022.4

RACHEL JONES
**lick your teeth, they so
clutch**
2021
Large panel: Acrylic, oil
pastel, and oil stick on
canvas
Small panel: Oil pastel and
oil stick on canvas
Large panel: 63 x 98 1/2 in.
Small panel: 5 3/8 x 7 1/2 in.
Gift of Robert Lowinger,
2022.6.A-B

MORTON RACHOFSKY
Cuboid Series D
2009
Stainless steel
17 × 17 × 17 in.
Gift of Sam Feldman, 2022.7

JENNA GRIBBON
Interrogation Lightscape
2021
Oil on linen
80 × 64 × 1 1/4 in.
Gift of the Green Family Art
Foundation, courtesy of
Adam Green Art Advisory,
2022.8

KENNETH TAM
Silent Spikes
2021
Two-channel HD video, color,
and sound
Running time: 20 min.,
29 sec.
Lay Family Acquisition Fund,
2022.11

NAUDLINE PIERRE
Guardian (Somewhere)
2021
Oil and acrylic on canvas
108 x 36 in.
Lay Family Acquisition Fund,
2022.12

RAFA ESPARZA
G's Up
2021
Acrylic on adobe
60 × 42 × 2 1/4 in.
Lay Family Acquisition Fund,
2022.13

GUADALUPE ROSALES
smile now, cry later
2021
Mirrored glass, painted frames,
LED lights, and photographs
50 x 50 x 3 in. each
Lay Family Acquisition Fund,
2022.14.A-B

MARC QUINN
**History Painting Emma
González Speaks at a Rally for
Gun Control (Fort Lauderdale,
17 February 2018) RWB**
2018
Oil on canvas
28 3/8 × 43 3/8 × 1 1/4 in.
Gift of an anonymous donor,
2022.15

RASHID JOHNSON
**The New Black Yoga
Installation**
2014
Digitized 16mm film with
sound and branded Persian
rugs
Dimensions variable
Gift of the artist,
2022.16.A-G

RASHID JOHNSON
The End of Anger
2012
Mirrored tile, black soap, wax,
books, oyster shells, shea
butter, and vinyl
Dimensions variable
Gift of Labora Collection / The
Mackie Family, 2022.17.A-E

JANIVA ELLIS
From Whom the Bell Tolls
2021
Oil on linen
96 × 77 1/4 × 1 1/4 in.
TWO x TWO for AIDS and
Art Fund, 2022.18

POPE.L
**The Great White Way, 22 Miles,
5 Years, 1 Street (Segment #1:
December 29, 2001)**
2001-2006
Video, color, sound, CRT
monitor, and resin or water
Running time: 6 min., 35 sec.
TWO x TWO for AIDS and Art
Fund, 2022.19

WANGARI MATHENGE
**The Ascendants XVIII (She Is
Here and So Are You)**
2021
Oil on canvas
73 1/4 × 80 × 1 1/2 in.
TWO x TWO for AIDS and Art
Fund, 2022.27

RIVANE NEUENSCHWANDER
Bataille
2017
Wood, felt, and embroidered
labels
Dimensions variable
TWO x TWO for AIDS and Art
Fund, 2022.28

JORDAN NASSAR
A sun in the room
2021
Hand embroidery on canvas
over canvas
27 × 29 in.
Dallas Art Fair Foundation
Acquisition Fund, 2022.39
*(Pictured on p. 87,
© Jordan Nassar. Image
courtesy of the Artist, Anat
Ebgi, Los Angeles, James
Cohan, New York, and the
Third Line, Dubai.)*

SARAH CAIN
Jamillah
2021
Acrylic, color copies, UV seal,
and backpack on canvas
60 1/4 × 48 × 6 1/2 in.
Dallas Art Fair Foundation
Acquisition Fund, 2022.41

DANIELLE MCKINNEY
Talk of the Town
2021
Acrylic on canvas
20 × 16 × 1 5/8 in.
Dallas Art Fair Foundation
Acquisition Fund, 2022.42

LESLIE MARTINEZ
Light Scans the Crest
2022
Fabric, paper, fine ballast,
pumice, Pearl Ex mica powder,
iron oxide, and acrylic on
canvas
89 3/4 × 70 × 3 1/2 in.
Lay Family Acquisition Fund,
2022.44

POSTWAR AND CONTEMPORARY ART

JAMESON GREEN
**In hopes that we find
 what we need**
 2021
 Oil on canvas
 108 1/4 × 132 1/4 × 1 3/8 in.
 Gift of Benjamin Khakshour
 and Justine Freeman,
 2022.45

DAVID-JEREMIAH
I Drive Thee
 2021
 Wood panel, oil-based
 enamel, and manila rope
 59 1/2 × 59 1/4 × 1 5/8 in.
 Charron and Peter Denker
 Contemporary Texas Art
 Fund, 2022.49

KALOKI NYAMAI
Untitled
 2022
 Acrylic and mixed media on
 canvas with sewn outlines
 61 1/2 × 60 1/4 × 3 in.
 Dallas Art Fair Foundation
 Acquisition Fund, 2022.50

PRINTS AND DRAWINGS

ART & LANGUAGE
 MICHAEL CORRIS,
 PRESTON HELLER, AND
 ANDREW MENARD
Untitled
 1974
 Offset lithograph on paper
 25 1/8 x 18 3/4 in.
 Gift of Michael Corris,
 2021.29.4

MICHAEL CORRIS
MICA Poster
 1975
 Serigraph on paper
 15 1/2 × 14 in.
 Gift of Michael Corris,
 2021.29.5

MICHAEL CORRIS AND
 ANDREW MENARD
Jet Lag Culture Crash
 1975
 Serigraph on paper
 17 3/4 x 23 in.
 Gift of Michael Corris,
 2021.29.6

ART & LANGUAGE
 MICHAEL CORRIS
**Belgrade Conversations at
 Student Cultural Center**
 1975
 Serigraph on paper
 16 1/2 × 29 1/2 in.
 Gift of Michael Corris,
 2021.29.8

ART & LANGUAGE
 JILL BREAKSTONE,
 MICHAEL CORRIS,
 PRESTON HELLER, AND
 ANDREW MENARD
**Exhibition Posters
 for Seminars at Smith
 College & University of
 Massachusetts**
 1976
 Serigraph on paper
 Two panels: 24 x 24 in.
 each
 Gift of Michael Corris,
 2021.29.9.A-B

ART & LANGUAGE
The Fox 1
 1975
 Poster; serigraph on
 newsprint
 22 1/8 x 23 1/2 in.
 Gift of Michael Corris,
 2021.29.10

ART & LANGUAGE
The Fox 2
 1975
 Poster; serigraph on
 newsprint
 23 1/8 x 35 in.
 Gift of Michael Corris,
 2021.29.11

ART & LANGUAGE
The Fox 3
 1976
 Poster; serigraph on
 newsprint
 23 1/8 x 35 in.
 Gift of Michael Corris,
 2021.29.12



PRINTS AND DRAWINGS

MICHAEL CORRIS
Transformational Matrix IV
 1972/2018
 Transfer lettering on paper/
 inkjet print on paper
 Three panels: 11 x 8 1/2 in.
 each
 Gift of Michael Corris,
 2021.29.14.A-C

OCTAVIO MEDELLÍN
**XTOL. Dance of Ancient
 Mayan People**
 1947
 Portfolio of 11 linoleum
 block prints
 13 x 9 7/8 in. each
 Anonymous gift,
 2021.31.1-13

*The following 14 works are
 gifts of Cornelia and Ralph
 Heins in honor of Elinor
 Heins.*

SALVADOR DALÍ
Tristan and Isolde
 1969
 Color-printed drypoint
 etching on Lana paper
 Printing plate: 23 1/8 x
 17 x 5/8 in.
 2021.32.2

OTTO DIX
Circus Rider on the Stage
 1923
 Watercolor
 Framed: 22 x 18 1/4 x
 1 1/4 in.
 2021.32.3

ERICH HECKEL
White Horses
 1912
 Colored woodprint
 Framed: 18 1/2 x 22 1/4 in.
 2021.32.4

EDVARD MUNCH
**Young Women at the
 Bridge**
 1918
 Color lithograph
 Framed: 26 5/8 x 24 x
 1 1/2 in.
 2021.32.13

PABLO PICASSO
**Bust with Checkered
 Blouse**
 1958
 Lithograph
 Framed: 29 1/2 x 17 3/8 in.
 2021.32.17

PIERRE-AUGUSTE RENOIR
L'Enfant au Bisquit
 1899
 Lithograph
 Framed: 18 x 14 1/2 x 1 in.
 2021.32.19

GEORGES ROUAULT
Rider
 1930
 Lithograph
 17 3/8 x 13 1/4 in.
 2021.32.21

HENRI DE TOULOUSE-
 LAUTREC
**Marcelle Lender en Buste
 Saluant**
 1895
 Color lithograph
 Framed: 11 3/4 x 9 3/4 in.
 2021.32.24

HENRI DE TOULOUSE-
 LAUTREC
L'Anglais au Moulin Rouge
 1892
 Color lithograph printed in
 six colors
 Framed: 30 1/2 x 23 x
 2 1/4 in.
 2021.32.25

HENRI DE TOULOUSE-
 LAUTREC
**La Partie de Campagne,
 Le Tonneau or La Charette
 Anglaise**
 1897
 Lithograph
 15 5/8 x 20 1/4 in.
 2021.32.26

HENRI DE TOULOUSE-
 LAUTREC
**Irish and American Bar,
 Rue Royale - The Chap
 Book**
 1896
 Brush, spatter, crayon,
 and transferred screen
 lithograph printed in five
 colors
 Framed: 23 x 29 1/2 x
 1 1/2 in.
 2021.32.27

HENRI DE TOULOUSE-
 LAUTREC
Frontispiece for "Elles"
 1896
 Lithograph on poster paper
 Framed: 33 1/2 x 26 1/2 x
 2 1/2 in.
 2021.32.29

HORST JANSSEN
Still Life
 1981
 Crayon (?) and pencil on paper,
 glued to paper support
 Framed: 23 3/8 x 19 1/2 in.
 2021.32.30

VICTOR VASARELY
Monastir
 1965
 Serigraph
 Framed: 33 x 25 x 3/4 in.
 2021.32.31

TONI LASELLE
Early Space Plane Exercises
 1941
 Colored pencil and collage on
 paper
 11 3/4 x 9 in. each
 Janet Kendall Forsythe Fund
 in honor of Janet Kendall
 Forsythe on behalf of the
 Earl A. Forsythe Family,
 2021.34.1-7

MARK DION
The Unicorn Horn
 2014
 Lithograph
 15 x 11 3/8 in.
 Donated by the family of Aaron
 Blake Simonton in his honor
 and remembrance, 2021.37.1

MARK DION
Fire Salamander
 2015
 Lithograph
 9 x 11 3/4 in.
 Donated by the family of Aaron
 Blake Simonton in his honor
 and remembrance, 2021.37.2

MARK DION
The Trilobite
 2016
 Lithograph
 11 1/4 x 15 in.
 Donated by the family of Aaron
 Blake Simonton in his honor
 and remembrance, 2021.37.3

MARK DION
**Misadventures of a 21st
 Century Naturalist**
 2017
 Print
 11 1/2 x 15 1/2 in
 Donated by the family
 of Aaron Blake Simonton in
 his honor and remembrance,
 2021.37.4

MARK DION
**The Life of a Dead Tree -
 Hemlock Woolly Adelgid**
 2019
 Silkscreen on paper
 24 x 18 in.
 Donated by the family of Aaron
 Blake Simonton in his honor
 and remembrance, 2021.37.5

MARK DION
Birds Named
 2020
 Medium unknown
 5 5/8 x 7 7/8 in.
 Donated by the family of Aaron
 Blake Simonton in his honor
 and remembrance, 2021.37.6

HAIM STEINBACH
EVERY SINGLE DAY
 2017
 Print
 8 1/2 x 11 in.
 Donated by the family of Aaron
 Blake Simonton in his honor
 and remembrance, 2021.37.7

ERNESTO NETO
Title unknown
 Date unknown
 Graphite on lined paper
 6 x 9 in.
 Donated by the family of Aaron
 Blake Simonton in his honor
 and remembrance, 2021.37.9

MARK DION
**When Dinosaurs Ruled the
 Earth**
 Date unknown
 Lithograph
 5 3/8 x 9 in.
 Donated by the family of Aaron
 Blake Simonton in his honor
 and remembrance, 2021.37.10

DANNY WILLIAMS
Untitled
 1976
 Acrylic on paper
 12 x 14 in.
 Gift of Charles Dee Mitchell,
 2021.38.2

CALLUM INNES
Untitled
 1996
 Watercolor on paper
 23 3/4 x 30 1/4 in.
 Gift of Charles Dee Mitchell,
 2021.38.3

JERRY BYWATERS
Mountains Meet the Plains
 1940
 Lithograph
 12 7/8 x 20 in.
 Gift of the Estate of John
 Lunsford, 2021.43.1

PRINTS AND DRAWINGS

EDWARD G. EISENLOHR
Crossing the Creek
 About 1895–1912
 Pastel on paper
 Framed: 15 1/2 × 19 5/8 ×
 7/8 in.
 Gift of the Estate of John
 Lunsford, 2021.43.2

EDWARD G. EISENLOHR
San Antonio
 July 1928
 Pencil on paper
 Framed: 19 5/8 × 15 5/8 ×
 3/4 in.
 Gift of the Estate of John
 Lunsford, 2021.43.3

VALTON TYLER
Wood with a Hole
 1979
 Gouache on board
 Framed: 9 7/8 × 9 7/8 ×
 1 5/8 in.
 Gift of the Estate of John
 Lunsford, 2021.43.4

VALTON TYLER
Untitled
 1995
 Prismacolor and ink on
 board
 19 7/8 × 30 1/16 in.
 Gift of the Estate of John
 Lunsford, 2021.43.5

SISTER MARY CORITA
 KENT
cure of the blind man
 1957
 Serigraph
 24 1/8 × 19 3/16 in.
 Gift of the Estate of John
 Lunsford, 2021.43.6

SISTER MARY CORITA
 KENT
god made the world
 1957
 Serigraph
 24 × 17 1/16 in.
 Gift of the Estate of John
 Lunsford, 2021.43.7

RODOLPHE BRESLIN
**Intérieur de Paysans de la
 Haute-Garonne**
 1858
 Chine-collé lithograph
 12 1/2 × 9 in.
 Gift of the Estate of John
 Lunsford, 2021.43.8

JOÁN MIRÓ
**Untitled from Je Travaille
 Comme un Jardinier (I
 Work Like a Gardener)**
 1963
 Color lithograph on Rives
 paper
 16 × 12 3/4 in.
 Gift of Philip Seib,
 2021.44.1

RUDY O. POZZATTI
Veil of Allegory
 1969
 Color lithograph
 19 7/8 × 13 7/8 in.
 Gift of Philip Seib,
 2021.44.2

CARL-HEINZ KLIEMANN
Genesis
 Date unknown
 Color woodblock print
 Framed: 19 1/4 × 16 1/2 ×
 2 in.
 Gift of Philip Seib,
 2021.44.3
(Pictured on p. 91)

JERRY BYWATERS
Rain on the Mountains
 1941
 Lithograph
 Framed: 17 × 20 1/2 ×
 1 1/2 in.
 Gift of Philip Seib,
 2021.44.5

JERRY BYWATERS
In Colorado
 1942
 Lithograph
 Framed: 17 1/2 × 19 5/8 ×
 1 1/4 in.
 Gift of Philip Seib,
 2021.44.6

ALEXANDER CALDER
**Red, Yellow and Black
 Balls on a Blue Ground**
 1969
 Color lithograph on Arches
 paper; artist's proof
 Framed: 26 1/4 × 19 ×
 1 3/8 in.
 Gift of Philip Seib,
 2021.44.7

ROBERT KIPNISS
Dawn, A Remembrance
 2004
 Mezzotint
 11 1/4 × 12 in.
 Gift of Marvin Bolotsky,
 2021.45.1

ROBERT KIPNISS
Forest Murmurs II
 2010
 Mezzotint
 13 3/4 × 16 3/4 in.
 Gift of Marvin Bolotsky,
 2021.45.2



ROBERT KIPNISS

Hidden Trees

2018

Mezzotint

17 × 14 1/4 in.

Gift of Marvin Bolotsky,

2021.45.3

ROBERT KIPNISS

Still Life with Dark Window

2001

Mezzotint

12 1/4 × 10 3/8 in.

Gift of Marvin Bolotsky,

2021.45.4

MC "5 CENTS" JONES

Untitled

About 1992

Ink and watercolor on
posterboard

11 1/8 × 14 in.

Gift of Deedie Potter Rose,

2021.46.7

CLAES THURE OLDENBURG

**Early Concept Sketch
for DMA Barrel Vault****Commission**

About 1983

Graphite on ruled paper,
glued to sheet of unruled
paper

5 1/16 × 2 3/4 in.

Gift of John Barnes, 2021.49

MARYLYN DINTENFASS

Good and Plenty**Quattro #2**

2003

Oil on paper monotype

31 × 31 in.

Gift of Jackie Chalkley,

2021.58

JORINDE VOIGT

The Landing (II)

2017

Ink, gold leaf, Indian ink,

pastel, and pencil on paper

55 × 90 1/2 in.

Gift of Katy and Kyle Miller,

2021.60

SUSAN WEIL

Color Configurations 2 (Red)

1998

Acrylic on paper

60 × 66 in.

Dallas Art Fair Foundation

Acquisition Fund, 2022.40

ANNA PARK

Any Takers

2022

Charcoal on paper on panel

59 3/4 × 86 × 1 3/4 in.

Gift of Kyoung Hwan Lee,

2022.48

KEER TANCHAK

NK Catherine

2022

Acrylic ink on paper

14 × 17 in.

Dallas Art Fair Foundation

Acquisition Fund, 2022.51

ATHENA LATOCHA

Untitled No. 2

2016

Sumi and walnut ink

on paper

36 × 60 in.

Dallas Art Fair Foundation

Acquisition Fund, 2022.52

FERNE KOCH

Gendarme, Arc de Triomphe,**Champs-Élysées**

1948

Gelatin silver print

Framed: 20 1/4 × 26 1/4 × 1 in.

Gift of Philip Seib, 2021.44.4

ALFRED STIEGLITZ

Ida O'Keeffe with**Birthday Cake**

1924

Gelatin silver print

3 5/8 × 4 5/8 in.

Gift of Daile Kaplan in honor

of Jane Gordon Cabaniss

Rutledge, 2021.59

MARSDEN HARTLEY

Movement, Bermuda

1917

Oil on board laid on board

Framed: 31 × 27 × 1 in.

The Eugene and Margaret

McDermott Art Fund, Inc.,

2022.20.McD

HUGH HENRY BRECKENRIDGE

Landscape

About 1908

Oil on canvas

25 1/2 × 24 in.

General Acquisitions Fund

and Janet Kendall Forsythe

Fund in honor of Janet Kendall

Forsythe on behalf of the Earl

A. Forsythe family, 2022.23



LIFETIME GIVING

The Museum extends its deepest appreciation to the following donors for their lifetime of support and recognizes their cumulative giving through June 30, 2022, including gifts of art (valued at time of donation).

\$20,000,000 AND ABOVE

Anonymous (2)
City of Dallas
The Dallas Foundation
Nancy B. Hamon*/The Estate of Nancy B. Hamon
Marguerite and Robert* Hoffman
Mrs. Emery Reves*
TWO X TWO for AIDS and Art

\$10,000,000-\$19,999,999

The Meadows Foundation
Mr. and Mrs. Howard E. Rachofsky/The Howard E. Rachofsky Foundation
Deedie and Rusty* Rose

\$5,000,000-\$9,999,999

Anonymous
Dallas Museum of Art League
Jennifer and John Eagle
Mr.* and Mrs. Vernon E. Faulconer
Helga A. Feldman*
Mr. and Mrs. Donald S. Freeman
Cecil H. and Ida M. Green/The Cecil and Ida Green Foundation/Estate of Ida M. Green
Mr. and Mrs.* Bryant and Nancy Hanley, Jr./
The Bryant and Nancy Hanley Foundation, Inc.
Estate of Henry Hawley III
The Hoffman Family Foundation/Adelyn
and Edmund Hoffman*
Estate of William B. Jordan and Robert Dean Brownlee
Edmund J. and Louise W. Kahn Endowment Fund
Mr.* and Mrs. H. Ross Perot/The Perot Foundation
Allen and Kelli Questrom
Nancy C. and Richard R. Rogers
Catherine and Will Rose
Mr.* and Mrs. Paul Stoffel

\$1,000,000-\$4,999,999

Anonymous (4)
American Airlines
ARCO Foundation

Jorge L. Baldor
Christopher Bancroft
Bank of America
Mr. and Mrs. James P. Barrow
Mrs. Franklin S. Bartholow
Mr.* and Mrs. Duncan E. Boeckman
Alan* and Anne Bromberg
Mr. and Mrs. Tim Byrne
Mr. and Mrs. Clint D. Carlson
Cartier
Kay and Elliot Cattarulla
Barbara W. Charlton and George* V. Charlton
J. E. R. (Bob) Chilton*
Mr. and Mrs. James H. Clark*
Carr P. Collins Foundation, Inc.
Mr. and Mrs. Richard W. Cree, Sr.*
The Dallas Morning News
Mr. and Mrs.* John W. Dayton
Mr. and Mrs. Robert Henry Dedman, Jr./The Robert
and Nancy Dedman Foundation
Claire Dewar
Laura and Walter Elcock
Exxon Mobil Corporation/Exxon Mobil Foundation
Mr. and Mrs. Trevor Fetter
Gayle David Fogelson*
Ann Jacobus Folz
Pauline Allen Gill Foundation/Mr. and Mrs. Roger C.
Sullivan*
Estate of Mrs. J. William Griffith
The Patrick and Beatrice Haggerty Foundation/
Mrs. Beatrice M. Haggerty
Mr. and Mrs. Howard Hallam
Mr. and Mrs. Thomas A. Hartland-Mackie/The Hartland
and Mackie Family Foundation
Timothy C. Headington
Hoblitzelle Foundation
Mr. and Mrs. Lee Hobson
Mr. and Mrs. S. Roger Horchow*
Mr.* and Mrs. Lamar Hunt
Institute of Museum and Library Services
Mr. and Mrs. Jerry W. Jones
Mr. and Mrs. J. Erik Jonsson*
JPMorgan Chase
Fannie W. and Stephen* S. Kahn/Estate of Stephen Kahn
Alex Katz
KOAI-The OASIS
KRNB
Mary Noel and Bill* Lamont
Lay Family Charitable Lead Trust II
Dr. Mark* and Barbara Thomas Lemmon
Mr.* and Mrs. Irvin L. Levy
Locke Lord LLP



Maurice Marciano
 The Edward and Betty Marcus Foundation
 Jeffrey A. Marcus
 Mr.* and Mrs. Stanley Marcus
 Mildred R. and Frederick M. Mayer Foundation
 The Andrew W. Mellon Foundation
 Microsoft Corporation
 Mr. and Mrs. William A. Montgomery
 Nancy A. Nasher and David J. Haemisegger
 Patsy R. and Raymond D. Nasher*
 National Endowment for the Arts
 National Endowment for the Humanities
 Estate of James Russell O'Neil
 Alvin & Lucy Owsley Foundation/David T. Owsley/
 Alconda-Owsley Foundation
 Josephine Bay Paul and C. Michael Paul Foundation, Inc.
 PNC Bank
 The Pollock Foundation
 Mr. and Mrs. C. Vincent Prothro/Vin and Caren Prothro
 Foundation
 Stephanie and John Roberts
 Nancy Cain Marcus Robertson
 The Rosewood Foundation
 Mr. and Mrs. Carl Sewell
 Nancy Shutt
 Mr. and Mrs. William T. Solomon, Sr.
 Texas Commission on the Arts
 Texas Instruments/Texas Instruments Foundation
 Tri Delta Charity Antiques Show
 TurningPoint Foundation

Mr. and Mrs. Thomas B. Walker, Jr.*
 The Estate of John Gilford Wilcox/
 Mr. John Gilford Wilcox*
 Sharon and Michael Young

*Deceased

GIVING COUNCILS

The following donors have supported the Museum with an annual gift greater than \$50,000 in FY 2022.

PRESIDENT'S COUNCIL

Jennifer and John Eagle
 Margot Perot
 Allen and Kelli Questrom
 Cindy and Howard Rachofsky
 Deedie Rose

DIRECTOR'S COUNCIL

Lydia and Bill Addy
 Nancy and Clint Carlson
 Laura and Walter Elcock
 Fanchon and Howard Hallam
 Nasiba and Thomas A. Hartland-Mackie
 Timothy C. Headington

Lyda H. Hill
 Marguerite Steed Hoffman and
 Thomas Woodward Lentz
 Nancy A. Nasher and David J. Haemisegger
 Nancy C. Rogers and Richard R. Rogers
 Catherine and Will Rose
 Peggy and Carl Sewell
 Nancy Shutt
 Vaughn O. Vennerberg II

DMA CIRCLE

The following members have supported the Museum with memberships from \$1,000 to \$25,000 as of June 30, 2022.

BENEFACTOR

Jean and Jim Barrow
 Brian Bolke and Faisal Halum
 Diane and Hal Brierley
 Melanie and Tim Byrne
 John Dayton
 Mr. and Mrs. Steven H. Durham
 Mr. and Mrs. Jeremy L. Halbreich
 Dr. and Mrs. Kenneth M. Hamlett
 Tim Hanley
 Ann and Lee Hobson
 Mrs. Lamar Hunt (Norma)
 Gene and Jerry Jones
 Asem and Marcia Khalil
 Mary Noel Lamont
 Barbara Thomas Lemmon
 Cristina and Harry* Lynch
 Mr. and Mrs. Terry A. MacRae
 Susan and Bill Montgomery
 Karen and Richard Pollock
 Carolyn and Karl Rathjen
 Marcia and Jonathan Sobel
 Mr. and Mrs. William Tarver Solomon, Sr.

LEADER

Beth and Eddie Ackerman
 Sylvia E. Almeida
 Vibeke and Niels Anderskov
 Mrs. Franklin S. Bartholow
 Mr. and Mrs. Thomas P. Burns
 Kay and Elliot Cattarulla
 Shelly and Michael Dee
 Rusty and Bill Duvall
 Mr. and Mrs. Gerald J. Ford
 Mr. and Mrs. Donald S. Freeman, Jr.
 Robert Hallam, Jr.
 Jack Lane
 Carol and John Levy
 Linda Marcus

Helen and Brendan McGuire
 Adriana and Guillermo Perales
 Bonnie Pitman
 Alana and Adrian Sada
 Joanna and T. Peter Townsend
 Max and Martha Wells
 Donna M. Wilhelm

FELLOW

Jennifer Burr Altabef
 Agustín Arteaga and Carlos Gonzalez-Jaime
 Ann and Gabriel Barbier-Mueller
 Mr. and Mrs. Edward Owen Boshell, Jr.
 Mary McDermott Cook
 Nancy Dedman
 Claire Dewar
 Pam and Jeffrey S. Ellerman
 Arlene Ford and Chris P. Reynolds
 James A. Griffin
 Kate Juett
 Mr. and Mrs. J. Luther King, Jr.
 Cece and Ford Lacy
 Mr. and Mrs. Robert Lavie
 Suzanne and Patrick McGee
 Mr. and Mrs. Mark Stanley Moussa II
 Abbé L. Patton
 Nancy Perot and Rod Cain Jones
 Sarah and Ross Perot, Jr.
 Chris and Joe Popolo
 Arthur M. Primas
 Mr. and Mrs. Stephen J. Rogers
 Mr. and Mrs. Daniel G. Routman
 Capera Ryan
 Marcy and Stephen Sands
 Gowri and Alex Nilak Sharma
 Sogand Shoja
 Garry Weber
 Sharon and Michael Young

COLLECTOR

Sheryl Adkins-Green and Geoff Green
 Patsy A. Bell
 Genie and Jim Bentley
 Brenda Berry
 Kathy Bishop
 Mr. and Mrs. Henri Bromberg III
 Kimberly Camuel Bryan and James Bryan
 Mr. and Mrs. Stuart Maryman Bumpas
 Cynthia and Alfred Calabrese
 Anne and Harris Clark
 Bonnie E. Cobb
 Mr. and Mrs. George W. Coleman
 Martin S. Cox and Sherry Tucker Cox
 Hannah Cutshall
 Gail and James Davitt
 Peggy Dear
 Barbara Delabano
 Bradbury Dyer III
 Christopher Elliott and Cecilia V. Velasquez Elliott



Mr. and Mrs. Robert W. England
 Gail O. Ewing
 Amy Faulconer
 Cindy and Charlie Feld
 Amy and Lee Fikes
 Kay R. Franks
 Mr. and Mrs. James A. Gibbs
 Kathleen and Robert Gibson
 Ilene Greene
 Alison and Owen Hannay
 Joe Hardt and Marie Park
 Linda and Mitch Hart
 Adrea D. Heebe
 Mr. and Mrs. Ralph Heins
 Philip C. Henderson
 John A. Henry III
 David S. Huntley and Tracey M. Nash-Huntley
 Joleen and Mitch Julis
 Susan and Bob Kaminski
 Lisa and Peter Kraus
 Jun Il and Jae Sun Kwun
 Paula Lambert
 Mr. and Mrs. William M. Lamont III
 Mr. and Mrs. George Terry Lee, Jr.
 Tim Litinas and Kathleen Litinas
 Lloyd Lumpkins
 Emily Maduro and Joseph J. Wielebinski
 Charlene and Tom* Marsh
 Pat and Charles McEvoy
 Dr. and Mrs. Venu Menon

Joyce and Harvey Mitchell
 Lisa Marie and Joseph Moriarty
 Mr. and Mrs. Richard T. Mullen
 Mr. and Mrs. Charles Nearburg
 Mr. and Mrs. John K. Pearcy
 Missy and Tim Peck
 Lucilo Peña and Lee Cobb
 Ella Wall Prichard
 Mr. and Mrs. David M. Pridham
 Katherine and Eric Reeves
 Lisa and John Rocchio
 Mr. and Mrs. Robert V. Rozelle
 Mary Jane and Frank Ryburn
 Sarah A. Samaan
 George Schnerk
 Manjusha Shankaradas and James Friedmann
 Alan Smith and Scott J. Canfield
 Jo and Andre Staffelbach
 Mr. and Mrs. Ronald G. Steinhart
 Wendy and Jeremy Strick
 Mr. and Mrs. Russell Sublette
 Emily and Stephen Summers
 Greg Swalwell and Terry Connor
 Rosalie Taubman
 Mary and Mike Terry
 Haley and Jackson Thomas
 Mr. and Mrs. Greg A. Venker
 Patricia Villareal and Tom S. Leatherbury
 Shelby Wagner and Niven Morgan
 Logan Waller

Marnie and Kern Wildenthal
 Cathryn Withrow
 Aaron B. Zeman and Dane A. Ruccio

ASSOCIATE

Suzanne G. Aberly
 Mr. and Mrs. Kenneth R. Adamo
 Susie and John Adams
 Mr. and Mrs. Neils Agather
 Cathy and Robert Allday
 Lisa A. Arbogast
 Jorge L. Baldor
 Mr. and Mrs. Ben E. Barnett
 Mr. and Mrs. Jameson S. Barrow
 Mr. and Dr. Kenneth Barth
 Nell Beck
 Jill Bernstein
 Amy and Gary Blackie
 Adam and Christy Blumenfeld
 Joanne L. Bober
 Bill Bond
 Robert Franklin Bossard
 Nikki Britten
 Abraham Brown and Jim Stephens
 Barbara Brown
 Lisa Browning
 Linda C. Buford
 Linda Burk and John Gilmore
 Shannon Wilson Callewart
 Mr. and Mrs. Thomas Cranfill Campbell
 James F. Carey
 Dr. and Mrs. William H. Caudill
 Charlie Adamski Caulkins
 Mr. and Mrs. Michael Cavanaugh
 Jennifer and James Chandler
 Erin E. Chernak
 Adam R. Clem
 Charlotte Clifford
 Mr. and Mrs. Roy C. Coffee, Jr.
 Barbara J. Coffman
 Phyllis Coit
 Richard H. Collins
 Mr. and Mrs. Eric Conner
 Gary Copeland
 Roberta Mathews Corbett
 Mr. and Mrs. Harlan Crow
 Carol Crowe
 Ashley Curnow and Charles John Curnow IV
 Mr. and Mrs. William A. Custard
 Mr. and Mrs. Alan M. Darver
 Charron Denker
 Aubrey DeZego
 Cynthia and John DiPonio
 Mr. and Mrs. Richard D. Eiseman, Jr.
 Mr. and Mrs. Barry Epstein
 Mr. and Mrs. Henry Exall, Jr.
 Catherine Feehan
 Mr. and Mrs. Alan D. Feld
 Mr. and Mrs. Hollye C. Fisk

Dr. and Mrs. Roy M. Fleischmann
 Mr. and Mrs. F. Barron Fletcher III
 Marion T. Flores
 Diane H. Flowers
 Tamara Wootton Forsyth and James Forsyth
 Mary Fox
 Mr. and Mrs. Peter Alexis Gerard
 Mr. and Mrs. Toby L. Gerber
 Mr. and Mrs. Mark Stewart Geyer
 Mr. and Mrs. Jack P. Gibson
 Jose E. Gomez and Francis A. Luttmer
 Dr. and Mrs. Craig Stuart Goodman
 Mona and Bill Graue
 Sarah Ryan Greene and Charles V. Greene
 Mr. and Mrs. Ralph Gretzinger III
 Mary S. Griggs
 Diana Gutman
 Connie Harkins and Douglas Newby
 Carole Hoffman and Dave Brigman
 Mr. and Mrs. Jonathan M. Houp
 Mr. and Mrs. James R. Huffines
 Myra B. Hull and Robert L. Hull
 Lisa and Clay Hunt
 Ruby Hunt
 Mr. and Mrs. Tom Hussey
 Mr. and Mrs. Jaime A. Jaramillo
 Sandra K. Johnigan and Donald C. Ellwood
 Jode Johnson
 Steve and Jennifer Jorns
 Mr. and Mrs. Tom David Karol
 Mr. and Mrs. John T. Kelly III
 Mr. and Mrs. Donald A. Key
 Mason D. King
 Mr. and Mrs. J. Bryan King
 Kline Family Foundation
 Mr. and Mrs. John Knight
 Patricia B. Kozak
 Dr. and Mrs. J. Sloan Leonard
 Mr. and Mrs. Paul Skyler Liechty
 David Liu and Michael Fountas
 Mr. and Mrs. James A. Mabry
 Mr. and Mrs. C. T. May, Jr.
 Holly and Tom Mayer
 Lauren McDowell
 Susan McIntyre and Trent Emory Cantrell
 Mr. and Mrs. Casey McManemin
 Errol Mitlyng and Anne McNamara
 Claire Moore
 Mr. and Mrs. Avery More
 Mr. and Mrs. Stephan E. Morton
 Chris Mulder
 Mr. and Mrs. Clint Murchison III
 Ruth Mutch
 Stacy L. Muth
 Mr. and Mrs. Gregory Nelson
 Mr. and Mrs. David Nurenberg
 Rebecca L. Ormsby and John V. Strednansky
 Danna Orr
 Joseph G. Pacetti
 Dan E. Patterson



Patricia Maris Patterson
 Patrick Pelz
 Bob and Katherine Penn
 Mary C. Person
 Sidney Perutz
 Daniel and Carol Podolsky
 Vin and Caren Prothro Foundation
 Harriet J. Raskin and Richard D. Berg
 Betty Regard
 Dr. and Mrs. Leonard M. Riggs, Jr.
 Sandra D. Roberdeau
 Dr. and Mrs. Albert D. Roberts
 Mr. and Mrs. Brett Robertson
 Ruth Robinson and Family
 Mr. and Mrs. Joel Robuck
 Mrs. Neall G. Rose
 Mr. and Mrs. Fred E. Rowe, Jr.
 Mr. and Mrs. John Runyon
 Mr. and Mrs. John Sadden, Jr.
 Joyce L. Sanders and Robert Lebovitz
 Jane M. Sandlin
 Cindy and Armond Schwartz
 Dr. and Mrs. Gabriel A. Shapiro
 Stephen Shore and Barbara Pilo
 Lisa K. Simmons
 Liza Fischer Skaggs
 Raymond Smerge
 Mr. and Mrs. John D. Solana
 Meri-Kay Star
 Richard L. and Alice Riggins Stevenson

Mr. and Mrs. Donald J. Stone
 Mr. and Mrs. Richard Strauss
 Mr. and Mrs. Mike Tankersley
 Chikako Terada and David H. Gibson
 Michelle R. Thomas
 Jere W. Thompson
 Jef Tingley and Jerrett Morris
 Howard W. Townsend
 Dr. and Mrs. Jonathan W. Uhr
 Dr. and Mrs. Hemant Vankawala
 Judy M. Vetter
 Karen D. Weiner and Howard J. Weiner
 Jane A. Wetzel
 Dr. and Mrs. Jeffrey Whitman
 Marilyn H. Willems and Joseph H. Willems*
 Carol L. Windham
 Carolyn Wittenbraker
 Charles Wylie
 Abigail Barton and J.D. Young
 Dawn and David Zierk

FAMILY FORUM

Ann G. Ash
 Mr. and Mrs. William Atkinson
 Mr. and Mrs. Ray A. Balestri
 Lindsay and George Billingsley
 Leigh Birdsong
 Kimberly Camuel Bryan
 Mr. and Mrs. Craig W. Budner
 Mr. and Mrs. Joseph E. Calder

Tena Callahan
 Carroll and Samuel Carroll
 Ashley and Robert Cathey
 Sharon Lee Clark and J. Maxwell Clark
 Anne Clayton and Jacques E. Vroom III
 Mr. and Mrs. Fernando De Leon
 Greg Delagi and Beth W. Delagi
 John-David Enright
 Mr. and Mrs. Greg Gray
 Ashley and David Greene
 Mr. and Mrs. Stephen Harrison
 Mr. and Mrs. Chase Hill
 Margaret L. Hirsch
 Mr. and Mrs. Chuck Jacaman
 Mr. and Mrs. Kevin Kirksey
 Sunny Knocke
 Nisa Kubiliun
 John and Nicolette Lamont
 Mr. and Mrs. William M. Lamont III
 Dana Landry and Chad Landry
 Lacy Lawrence and John B. Lawrence
 Traci and Hamilton Lee
 Mr. and Mrs. Todd Lemkin
 Rachel P. Leventon and Isaac D. Leventon
 Jennifer Mason
 Gillian and Tony Moore
 Mr. and Mrs. Ross Mulford
 Elizabeth Odstrcil and Brian Shultz
 Elizabeth and Damian Ornani
 Mr. and Mrs. Michael J. Osburn
 Mr. and Mrs. Hadley W. Paul
 Mr. and Mrs. Michael Presti
 Cheryl and Andrew Schoellkopf
 Mr. and Mrs. Carl Sewell III
 Mr. and Mrs. Blake R. Shipp
 Angela Shoup and Brett Barron
 Nicole Small and Justin A. Small
 Savannah and John Stevens
 Mr. and Mrs. Brian Stewart
 Estelle and Michael Thomas
 Mr. and Mrs. Richard Turcotte
 Mr. and Mrs. John A. Valadez
 Ashley Venetos
 Jennifer R. Winkler
 Mr. and Mrs. Josh Wool
 Lyssa O. Young and D'Arcy Young

CONTRIBUTOR

John and Sunny Ackerman
 Mr. and Mrs. Jerry C. Alexander
 Mr. and Mrs. Charles L. Allen
 Amanda and Michael Anderson
 Leigh M. Andrews
 Joanne and Bob Anterhaus
 Mr. and Mrs. Frank Ashmore
 Adrienne Atkin
 Joellen Baldwin
 Diana Barnett
 Mr. and Mrs. Richard Barrett

Mr. and Mrs. Charles A. Beach
 Steven and Carrie Becker
 Mr. and Mrs. John A. Beckert
 Jill Bee and Loren Glasser
 Susan and William Behrendt
 Nancy Benefield
 Christy Berry
 Mr. and Mrs. Michael A. Bickford
 Ruth Bison
 Boeckman Family Foundation
 Susan Bondy
 Patricia and Mark Born
 Jeremy A. Bowdoin and Sarah Jane Worrell-Bowdoin
 Carole L. Braden
 Lori and Mark Bradley
 Mr. and Mrs. Robbie M. Briggs
 Mr. and Mrs. John E. Bromberg
 Christy and Jonathan Brown
 Mr. and Mrs. Ike Brown
 Mr. and Mrs. Ken Bruder
 Catherine E. Bruff
 Mindy and D. Kirk Buchanan
 Carl R. Buck
 Mary Frances Burleson
 Christina Burns
 David Cadwallader
 James A. Campbell and John Phifer Marrs
 Karen and Tommy Campbell
 Mary Bowman Campbell
 Judith W. Canon
 Sue Capp
 Phyllis and Bruce R. Carr
 Mr. and Mrs. Donald J. Carty
 Mr. and Mrs. William B. Chaney
 James B. Clark
 Erin Cluley and Tearlach Hutcheson
 Suzanne Collmer
 Mr. and Ms. Bill G. Compton
 Maura and Timothy Costello
 Mr. and Mrs. Philip A. Crew
 Mr. and Mrs. Charles B. Crowell
 Mr. and Mrs. John Anthony Cuellar
 Robbie and Art Daniel
 Frances Dare
 Jennifer Depace and D. G. Seal
 Ian Derrer and Daniel James
 Mayron Z. Desta
 Hedda G. Dowd
 Ruth Ann and H. Mark Dunn
 Mr. and Mrs. Thomas M. Dunning
 Dr. and Mrs. Frank J. Durante
 Paul Dybala
 Alexandra Eagle
 Chris Edgemon and Karan Edgemon
 Kathy Egan
 Patti L. Elliott
 Nancy and Webb J. Esber
 Sandra Estess
 Lori Anne Fink
 Mr. and Mrs. Mattia J. Flabiano III



JoJo and Eric Fleiss
 Andy Frechtling and Candace Faber
 Venus Frederick
 Tara Freeman and Mark Freeman
 Mr. and Mrs. Woodrow W. Gandy
 John Gardner
 Mr. and Ms. Steven H. Gendler
 John and Myra Gilllean
 Sue Gilly and Jack Teague
 Mr. and Mrs. Clifford Jay Ginsberg
 Mr. and Mrs. Alan Gold
 Arielle Goldberg
 Mr. and Mrs. Bruce Goldberg
 Robert A. Goldberg
 Joseph L. Goldstein
 Mr. and Mrs. Dave Gonzales
 Edwina and Jesse Gonzalez
 Joyce S. Goss
 Debra and Eric Green
 Graham Greene and Kathryn Greene
 Mr. and Mrs. Gregory C. Greene, Sr.
 Mr. and Mrs. R. J. Grogan, Jr.
 Dr. and Mrs. Gary N. Gross
 Irma Grossman
 John K. Guitar
 Roy and Judy Gurley
 Virginia T. Guthrie
 Mr. and Mrs. Richard E. Gutman
 Mr. and Mrs. Michael Haggerty
 Paul H. Hale and Oscar Gomez

Barbara Haley
 Mr. and Mrs. Andrew Hallam
 Mr. and Mrs. John Hallam
 Mr. and Mrs. Robert Hallam, Sr.
 Mr. and Mrs. Thomas S. Halsey
 Lynn and Dan Hamstra
 Deborah Hankinson
 Sarah and William Harkinson
 Kymberly and Kelly Harris
 Carol Hartman
 Fanny and Israel Hartman
 Michelle Hartmann and Todd McGee
 Susan and Jack Hawkins
 Catharina and Craig Haynes
 Hegi Family Foundation
 Mr. and Mrs. Patrick James Hennessey
 Kenneth A. Hersh
 Sara and Matthew Hignite
 Nancy Hodge and Douglas Orr
 Amy Lewis Hofland and Scott Hofland
 Kathleen M. Hogan
 Mr. and Mrs. James Allen Holmes
 Regen Horchow
 Andrew Horn
 Ed R. Howard
 Randall K. Hulme and Haseena Enu
 Mark J. Hupert and Mark B. Lombard
 Anna Hwang
 Randall and Darci Iola
 Robert W. Ivey III and Chad Bieber

Mr. and Mrs. R. Steven Ivy
 Mr. and Mrs. David Jacobs
 Mr. and Mrs. Jonathan L. Jarratt
 Alexandre Jasserme
 Emily Jefferson
 Mr. and Mrs. Ken Jinkerson
 Mr. and Mrs. James Johnson
 Shalmir and Richard D. Johnston
 Yon Jordan
 Rita Karl and Magda Lam
 Theresa and Krishna Kavi
 Caren and Keith W. Kennedy
 Lillian Kennedy
 Christina Kerbow
 Mr. and Mrs. Mark Kever
 Barron U. Kidd
 Sheilon King
 Ronald W. Kirk
 Mr. and Mrs. Ron Klein
 Rodger D. Kobes and Michael Keller
 Mr. and Mrs. Klaus Koch
 Julie Kosnik
 Mr. and Mrs. Greg Kozmetsky
 Mr. and Mrs. Robert Krakow
 William Kramer
 Dr. and Mrs. John Krause
 Sue E. Krider
 Terry and Jeff Kurz
 Mr. and Mrs. Jonathan D. Kutner
 Barbara Lake
 Dorothy Lay
 Erika Lee and Michael R. McFadden
 Dr. and Mrs. William M. Lee
 Mr. and Mrs. Thomas Robert Leslie IV
 Lonnie L. Lewis and Dorothea D. Lee
 Lynn M. Lewis
 Ruth H. Lewis
 Meghan Looney
 Mr. and Ms. Alan Losinger
 Mr. and Mrs. Brett Lowery
 James A. Lockett and Kristi U. Motley
 Mr. and Mrs. Bobby Lyle
 Barbara M. Lynn and Michael P. Lynn
 Mary Ann G. Lyons
 Elizabeth Mack and David Allen
 Sue L. Maclay
 Willis C. Maddrey
 Lynn Mahony
 Alisa and Jason Makler
 Irene Martin
 Mr. and Mrs. Wilson K. Mason
 Thomas Maurstad and Lisa Dawson
 James McBride
 Susan and David McCombs
 William McCoy and Susan Brown
 Glenn McCutchen
 Margaret G. McDowell and Dave C. McDowell
 Mr. and Mrs. Cappy McGarr
 Mr. and Mrs. David A. McGee
 Francis K. McGinnis III

Mr. and Mrs. Peter G. McGuire
 Mr. and Mrs. William S. McIntyre IV
 Amy McKnight
 Mr. and Mrs. Travis E. McLeod
 Danny and Debbie McQuary
 Mr. and Mrs. Rai Mehta
 Marlo and Jeff Melucci
 Mr. and Mrs. David Bruce Miller
 Donovan Miller and Aaron Thomas
 Kyle and Katy Miller
 Retta A. Miller
 Vicki and Brian Miller
 Regina Montoya and Paul Coggins
 Suzanne Moore and Wiley Kirk
 Donna Morrow
 Shellie and Jeff Munn
 Mr. and Mrs. Louis K. Navias
 Mary Nelson
 Linda Catherine Niessen and John J. Lonergan
 Mr. and Mrs. Michael J. Ochstein
 Zepur Ohanian
 German and Diana Oliver
 Tina and Duffy Oyster
 Mr. and Ms. Robert M. Ozarow
 Lynne A. Parkhurst
 Maureen and Mike Parks
 Payne Family
 Richard Peebles
 DeEtte and Paul Peters
 Debra Goldstein Phares
 Katherine and Michael Phillips
 Heather M. Piper
 Alisa and E. J. Pipkin
 Mr. and Mrs. Biggs Porter
 Dr. and Mr. J. Holland Powell, Jr.
 Pat and John Priest
 W. Paul Radman and Jane Vandecar
 Priya Ramachandran
 Wanda and Michael Ray
 Stephanie and Kurt Read
 Mr. and Mrs. Michael Redwine
 Bob Rice and Robyn M. Rogers
 Janet K. Richter
 Serena Y. Ritch
 Mr. and Mrs. Charles R. Ritchey
 John H. Rodgers
 Nicole Rodriguez and David Wetters
 Victor Rodriguez
 Thomas M. Rogoff and Andrea Rosenberg
 Mr. and Mrs. Marcos G. Ronquillo
 Tina L. Rossi
 Mr. and Mrs. Matthew Rubel
 Candace Rubin and Buz Burkhead
 Mr. and Mrs. Robert F. Ruckman
 Mr. and Ms. Michael J. Russell
 Larry Rutt and Michele Renault-Rutt
 Amanda and George Brint Ryan
 Thomas G. Sanden and Thomas E. Newbury
 Mr. and Mrs. William F. Sanderson, Jr.
 Janice Schoellkopf



Celia and Larry Schoenbrun
 Mr. and Mrs. Richard H. Schulze
 Elizabeth Ann Scott
 Mr. and Mrs. John Field Scovell
 Nancy B. Shelton
 Lawrence Siegel
 Jerrie M. Smith
 Gloria McCall Snead and Juan Ernesto Snead
 Mary Carole Snyder
 Carolyn W. Speed
 Brenda and Nelson Spencer
 Darren R. Stanley and Paul Wackym
 Carol Staubi
 Chandra Stewart
 Melissa and William Stewart
 Jean Stie
 Elizabeth and Steve Suellentrop
 Sarah and Michael Sutton
 Allen Swackhamer
 Ashley E. Tatum
 Mr. and Mrs. Chris Temple
 Bonnie and Clifford Thomson
 Mr. and Mrs. Michael Tonti
 Vicki Topletz and Steven Topletz
 Arthur Tribble
 Whitney and Ryan Turner
 Mr. and Mrs. Jack Tutterrow
 Mr. and Mrs. Robert C. Vaughn
 Mr. and Mrs. Kevin Vogel
 Linda Schoeneman Vorhies

Elizabeth B. Wahlquist
 Christian Walker
 Lorry and Patrick Wallace
 Mr. and Mrs. E. John Ward
 Mrs. William C. Ward
 Mr. and Mrs. Leslie Ware
 Mr. and Mrs. Ben R. Weber, Jr.
 Carol and Curt Welwood
 Diane and George Wendel
 Gloria B. Westheimer
 Phil Whitfield
 Roberta Williamson
 Ken Woolley and Linda Woolley

* Deceased

CONTEMPORARY ART INITIATIVE

The Contemporary Art Initiative (CAI), established in 1999, is a philanthropic group committed to the DMA and to contemporary exhibitions and programming. Membership is open to those who wish to join the DMA as a member and have a unique interest in contemporary art. The following donors made contributions to this fund in FY 2022.

Mr. and Mrs. Felix Thaddeus Arroyo
 Lisa D. Brooke
 Nancy and Clint Carlson
 Mrs. Charlie Adamski Caulkins
 J. Patrick Collins
 Bela and Chase Cooley
 Claire Dewar
 Jennifer and John Eagle
 Pam and Jeffrey S. Ellerman
 Dr. and Mrs. Brian Gogel
 Craig and Kathryn Hall
 Nasiba and Thomas A. Hartland-Mackie
 Timothy C. Headington
 Alejandro Laplana
 Mr. and Mrs. John S. Lemak
 Cynthia and Forrest Miller
 Tricia Miller
 Jessica and Dirk Nowitzki
 Janelle and Alden Pinnell
 Allen and Kelli Questrom
 Cindy and Howard Rachofsky
 Nancy C. Rogers and Richard R. Rogers
 Catherine and Will Rose
 Deedie Rose
 Mr. and Mrs. Charlie Shufeldt
 Gayle Stoffel
 Sharon and Michael Young

DECORATIVE ARTS AND DESIGN INITIATIVE

The Decorative Arts and Design Initiative (DADI), established in 2020, is a philanthropic group of members who understand the importance of bringing world-class decorative arts and design programming to the DMA and to our beloved North Texas community. The following donors made contributions to this fund in FY 2022.

Jean and Jim Barrow
 Patsy A. Bell
 Mr. and Mrs. Jason A. Bender
 Mil Bodron
 David Cadwallader
 Stephanie and Matthew Ciccone
 Mary McDermott Cook
 Bela and Chase Cooley
 Kenneth Craighead
 John Dayton
 Rusty and Bill Duvall
 Virginia Eiland
 Laura and Walter Elcock
 Dr. and Mrs. Kenneth M. Hamlett
 Ann and Lee Hobson
 Marguerite Steed Hoffman and
 Thomas Woodward Lentz

Christina and Sal Jafar
 Mr. and Mrs. William M. Lamont III
 Peggy Levinson and Dana A. Fuller
 Mr. and Ms. Alan Losinger
 April and Jeff Manson
 Mr. and Mrs. Charles Marsh
 Bradley Means
 Susan and Bill Montgomery
 Elizabeth and Damian Ornani
 Margot Perot
 Cindy and Howard Rachofsky
 Karen Rigdon
 Deedie Rose
 Peggy and Carl Sewell
 Mr. and Mrs. James A. Showers
 Mr. and Mrs. Charlie Shufeldt
 Emily and Stephen Summers
 Vaughn O. Vennerberg II
 Sharon and Michael Young

DMA MEMBERS

The following members have supported the Museum with memberships at the \$500 level as of June 30, 2022.

ADVOCATE

Kellye Elaine Abernathy
 Andrew Aboujaoude
 Mr. and Mrs. Karim N. Abuhamad
 John S. Acker
 Marianne Adkins
 Susan H. Albritton
 Jaffar K. Aleagha
 Mr. and Mrs. Larry Angelilli
 William T. Arterburn
 Dr. and Mrs. James M. Atkins
 Loren Axberg
 Leslie A. Baggish
 Lynn Baker
 Timothy Bardlavens
 Katy Barker
 Emily Barnes
 Mr. and Mrs. Peter B. Bartholow
 Lois Bateman
 Barbara S. Baxter
 Michele D. Beal
 Rosanne Bell
 Helen Benjamin
 David and Eileen Birch
 Mr. and Mrs. Brian Bolton
 Richard T. Bowen
 Ronald Brennan
 Mary Brigham
 Regina Bruce and John Pickett
 Marguerite H. Burtis and Peter S. Vogel
 Hampton L. Burwick, Jr.



Mr. and Mrs. John A. Buxton
 Mr. and Mrs. Brett C. Campbell
 Henry V. Campbell III
 John Carlo and Art Bloodworth
 Mr. and Mrs. Jeffrey Casey
 Mr. and Mrs. E. N. Cates, Jr.
 Barbara W. Charlton
 Mr. and Mrs. Daniel O. Chesnut
 Mr. and Mrs. John J. Ciavarra
 Mr. and Mrs. Robert C. Clancy
 Margaret Clements
 Ana Cleveland
 Dr. and Mrs. Stanley Cohen
 Rick Coke
 Karen Collins-Nobles
 Dexter S. Cook
 Mr. and Mrs. Richard Covington
 Yvonne Marie Coyle
 Mr. and Mrs. Robert E. Cronin
 William M. Crook
 David Culley
 Lee Cullum
 Joan C. Davidow and Stuart Glass
 Barbara A. Davis
 Joseph R. Davis
 Tom H. Delimitros
 Michelle E. Dickson
 Rodney L. Dobbs
 Timothy F. Domain
 Michael J. Downing and Judith Nussenblatt

Mary F. Driver
 Ajay Dubey
 Judy Due
 Diana Dutton and Anthony R. Grindl
 Susan L. S. Ernst and Warren M. S. Ernst
 Jana Etheridge and David Carles
 Dr. and Mrs. Stanley Feld
 Susan K. Fender
 Sing-Yi Feng
 Kathryn Ferguson
 Robert L. Fine and Nina Cortell
 Mr. and Mrs. Mike E. Florence III
 Veletta A. Forsythe-Lill and John C. Lill
 Charles F. Foster and William E. Maina
 Mr. and Mrs. Jerome J. Frank, Jr.
 Jerry Frank
 Ronald J. Franké and Sharon A. James
 Jason Franklin
 Linn Franklin
 Mr. and Mrs. Thomas Fricke
 Dr. and Mrs. Clifford Fullerton
 Mr. and Mrs. Marshall Funk
 Catalina E. Garcia and Rollin F. Gary
 Mr. and Mrs. Bryan Garner
 Evan Gartley
 Mr. and Mrs. Robert Gass
 Frederic Gasser
 Mr. and Mrs. Lawrence Gekiere, Sr.
 David Genecov and Lisa Genecov
 Helena Gentry

Charles George
 Mr. and Mrs. David Gerhauser
 Mr. and Mrs. Shubha Ghosh
 Kevin Gibbs
 Ginger Gill
 Kathryn H. Gilman
 Mr. and Mrs. Patrick Giroir
 Mr. and Mrs. David W. Gleeson
 Mr. and Mrs. Michael Glenn
 Mr. and Mrs. Dan B. Goetz
 Mr. and Mrs. Jacob Goetz
 Mr. and Mrs. Stephen F. Goldmann
 Oscar Gomez
 Mr. and Mrs. Wade S. Goodrich
 Mr. and Mrs. William J. Goodwin
 Mr. and Mrs. Terry D. Gottberg
 Peter Gottlieb and Debra Demuth
 Deandra M. Grant
 Fish Greenfield and Thom Maciula
 Mr. and Mrs. Guy U. Griffeth
 Robert D. Gross
 Mr. and Mrs. Stephen E. Hanna
 Mr. and Mrs. Robert S. Harlin, Jr.
 Mr. and Mrs. Byron Harris, Jr.
 Mr. and Mrs. Eric Harvey
 Karen Hauser
 Mr. and Mrs. Joe V. Hawm, Jr.
 William T. Heath
 Marcy C. Helfand and Robert Book
 Carol Heller
 Mr. and Mrs. William C. Helmbrecht III
 Charlotte Helmers
 Mr. and Mrs. Randy Herald
 Mr. and Dr. Edward J. Hernandez
 Sydney L. Herndon and Rene J. Reyes
 Mark Heymann
 Spencer Hill
 Mr. and Mrs. Forrest E. Hoglund
 Mr. and Mrs. James M. Hogue
 Linda Holt and Joseph McElroy
 Mr. and Mrs. Dwain Davis Howard
 Shane Humphries
 M. L. Hutchins
 Nina C. Hutton
 Sandra and Rick Illes
 Roman T. Jackson
 Mr. and Mrs. Stephen James
 Mr. and Mrs. Paul Jarzemsky
 Elizabeth Jeffett
 Susan E. Jelen
 Dennis Johnson
 Fern Johnson
 Mr. and Dr. Stephen C. Jordan
 Mr. and Mrs. William M. Katz, Jr.
 Burdette W. Katzen
 Rachael Keilin and Ron Hekier
 Mr. and Mrs. William G. Kelley
 Betty E. Kelly
 Charles T. Kennedy
 Dr. and Mrs. Ronald N. Kerr

Ellen Key
 Mr. and Mrs. James W. Keyes
 Sun Kim
 Mr. and Mrs. John Kimberlin
 Mr. and Mrs. William E. Knepshield
 Mr. and Mrs. Jack Knox
 Allison Michelle Krejci
 Mr. and Mrs. Francis Christopher LaRocca
 Eleanor Lederer and Paul R. Lederer
 David L. Leon and Missy M. Leon
 Mr. and Mrs. Andy Leonard
 Alan H. Levi
 Mr. and Mrs. George R. Lewis
 Mark W. Lewis
 Jo Marie Lilly
 Nicola Longford and Habib Lorient-Bettaieb
 Mr. and Mrs. Peter Lorenzen
 Ana C. Lorenzo and Manuel Lorenzo
 Katherine G. Lyle
 Patricia Lyle and Scott Bailey
 Barbara A. Marshall and James Orkin
 Mr. and Mrs. Cory L. Martin
 Harry Martin, Jr.
 Mr. and Mrs. Terry S. Martin
 Michael T. Mason
 Mr. and Mrs. Jadd Masso
 Robert Matejek
 Michael K. Matthews
 Miya Maysent
 Mr. and Mrs. James D. McCarthy
 Mr. and Mrs. James McClure
 Mr. and Mrs. E. Paul McNutt
 Mrs. John Meagher
 Rachel Mentink-Ferraro and Jason Ferraro
 Charles Dee Mitchell
 Sally Montgomery
 Dr. and Mrs. Robert A. Moore
 Julie Morgan
 Michael Moroney
 Bruce A. Morrice
 Laura and Kevin Morrill
 Mr. and Mrs. Ronald C. Morrill
 Mr. and Mrs. Stuart Morse
 Mr. and Mrs. Randall F. Muck
 Venkat Muduta
 Jean M. Murdock and Todd Sandler
 Timothy A. Murphy and Gregory K. Doss
 Inga Musselman
 Mr. and Mrs. C. Jedson Nau
 Lacy Naylor
 Mr. and Mrs. Farrokh Nazerian
 Dana Nearburg
 Mr. and Mrs. Esteban B. Neely
 Ken W. Nelson
 Margaret J. Nelson
 Dr. and Mrs. Aharon Netzer
 Brian Neuhoff
 Dr. and Mrs. Keith D. Newman
 Carl A. Niendorff
 Mr. and Mrs. John Nolan



Erle Nye
 Kimber Oldham
 Stuart and Margaret Owen
 Mr. and Mrs. Mark Quentin Partin
 Michael W. Paschetag and Trudie L. Paschetag
 Susan J. Perrin
 Dr. and Mrs. Don N. Peska
 Mr. and Mrs. Warren Ross Petersen
 Mr. and Mrs. Jeffery Phillips
 Carol S. Placido
 Lucy S. Polter
 Carole Price
 Marcia Pulich
 Mr. and Mrs. James S. Ramsey, Jr.
 Lisa Ratliff
 Mr. and Mrs. Kurt C. Read
 Mr. and Mrs. Frank A. Richards
 Mr. and Mrs. Jesse C. Rios
 Mr. and Mrs. Jacob P. Roberts
 Mr. and Mrs. Randolph W. Robinson
 Leslie Roden-Foreman and Michael L. Foreman
 Mr. and Mrs. David G. Rogers
 Mr. and Mrs. Richard S. Rogoff
 Dr. and Mrs. Randall Rosenblatt
 Louise M. Rosenfield and David Rosenfield
 Rachel Rucker-Schmidt and Jason Schmidt
 John and Cynthia Rutherford
 Deborah Ryan
 Jane Sadler and Samantha Sadler
 Mr. and Mrs. James L. Sanders

Jeanne C. Sanders and Michael R. Veale
 Patricia C. Santiago and Omar Gonzalez
 Mr. and Mrs. Donald H. Schaffer
 Gayatri Seshadri
 Jane Shea
 Mr. and Mrs. Aaron Shelby
 Linda C. Shirley
 Dr. and Mrs. Norman R. Silverman
 Mr. and Mrs. Steve Silverman
 Lekha Singh
 Mr. and Mrs. Bryan W. Sircely
 Jan N. Sittel and Peter G. Hancon
 Renee A. Skinner
 Mr. and Mrs. Frank O. Sloan
 Dr. and Mrs. Arthur T. Smith
 Wendell Sneed
 Kim Snipes
 Priscila Soria
 Mr. and Mrs. Dan South
 Mr. and Mrs. Tim Sowers
 Jonathan B. Speerly
 Debbie Stack
 Mr. and Mrs. Jack A. Stecher
 Rederic Steinkamp
 Salle W. Stemmons
 Frank E. Stevenson II and Helen R. Stevenson
 Mark C. Stoltz
 Amanda Strauss
 Stephanie and Richard L. Strom
 Tim Terleski and Kristin Kritz

Rhonda Thomas-Florimbi
 Mr. and Mrs. James M. Tibbals
 Cynthia K. Timms and Edward G. Timms
 Sharon Tindell and Kip Tindell
 Mr. and Mrs. Todd M. Tomlin
 Jeffrey W. Van Ouwerkerk
 Roslyn A. Walker
 Dr. and Mrs. Bob Wallace
 Mr. and Mrs. David Wallenstein
 William R. Weaver
 Don E. Welsh and Michael A. Mehl
 Mr. and Mrs. Ronald Whitehead
 Darlene G. Williams and Stephanie Barker
 Mr. and Mrs. Hunter Williams
 Mr. and Mrs. J. Bowman Williams
 Michelle and Wade Wilson
 David E. Witherspoon
 Debra Witter and Scott Chase
 Kristen Wittwer
 Leon Wolf
 Megan Wood
 Deborah Wootton
 Thomas C. Wright
 Carol Wyant
 Victoria Zudak and John C. Eichman
 Jeffrey L. Zwiebel

JUNIOR ASSOCIATE

Lindsay Abernethy
 Kaily Adair
 Emily Adams
 Vanessa Agoh
 Kathrine Allen
 Mr. and Mrs. Andrew Allsup
 Sarah K. Allsup
 Timothy Annick
 Dustin Anthamatten
 Elizabeth Armistead
 Abigail N. Armour
 Raha Assadi
 Ivy Awino
 Alexandra Bacalao and Michael Connelly
 Virginia Bailey
 Rachel and Grant Baldwin
 Mya R. Barr
 Max and Shelby Bennett
 Charleigh Berry
 Sarah and Ty Bishop
 Meredith L. Block
 Elizabeth Bodzy
 Kathryn Bogart
 Summer E. Bosch
 Laura Brayshaw
 John Brickson
 Ashley Briscoe
 Blevin P. Brown
 Lori H. Burk
 Laurel Bush
 Adela Canaj
 Lewis Carlson

Loren and Jason Carpenter
 Madeline and Wynn Cary
 Stuart J. Chasanoff
 Alexander Chen
 Martha Chimhashu
 Adam Christopher
 Lili Clark
 Wendy Cohen
 Elle Congelliere
 Grace E. Cook
 Angela Copeland
 Kathleen Cotter
 Michael Cotumaccio
 Caylin C. Craig
 Harrison H. Craig
 Margaret Craig
 Katie Crosslin
 John Cruz
 Miles T. Danielson
 Camille M. Davis
 Jennifer Davis
 Conrad B. DeBaillon
 Andrea A. De Pro
 Michael Dewberry
 Samuel Dickie
 Noa Dowl
 Abbey Dyke
 Jean A. Dymott
 Alexandra Eagle
 Jeremiah Egbele
 Jeffrey D. Eiting and Brinkley A. Brown
 Maryann P. Eldred
 Marisa Elias
 Rachel L. Ellington
 Marlena and Brent Michael English
 David Escamilla
 Katie Escobedo
 Essencejoy G. Evangelista
 Hannah Fagadau
 Charlotte Farrar
 Yvette Ferrer
 Nicole Flores
 Kimberly Foster
 McKenzie Fowler
 Maxim J. Franke
 Elena Frattaroli
 Allison Gaughan
 William H. Gertsen
 Alec Greenspan
 Griffith Greer
 Tristan Grimes
 Brandon Handy
 Rhonda Headley and Jane Mathews
 Barbara Hearne
 DeQuilla Henderson
 Kian Hervey
 Robert Hill
 Geoffrey G. Hirsch
 Karren Hodge
 Talley Hodges



Taylor Holdridge
 Bradley Houston
 Katherine and Jonathan Hughes
 Lindsey E. Hughes
 Annette Hunt
 Hollis Hunt
 Mary A. Hunt
 Mark C. Hutchinson
 Martha and Kelly Ingram
 Caroline C. Jackson
 Anne P. Jensen
 Christina W. Jensen
 Aiden Johnson
 Jeffrey M. Johnson
 Kandace Johnson
 Tamara Johnson
 Gwen G. Jones
 Alex Kang
 Cullen Keeter
 Cole Kelly
 Thomas D. Kennedy and Robert M. Clements
 Dharma K. Khalsa
 Stephanie Kirkbride
 Marcus Knowles
 William D. Knox
 Nicole Konatsotis
 Noah Koon
 Kevin Kotamarti
 Meredith A. Kuser
 Madeline Lahoda

Tiara S. Lampley
 Anna K. Larsen
 Anna Lassiter
 Ashton Leath
 Nicola LeBlanc
 Lee E. Lee
 Audra Leseckaite
 Austin Lewis
 Lindsay London
 Carson A. Lucas
 Mylinh Luong
 Caroline Luther
 Whitney MacDonald
 Amy Maher
 Lea Mallison and Veronica Crecelius
 Miguel A. Martinez
 Monica and Joseph Matula
 Chase Mayo
 Kaiya McCray
 Kayla C. McDowell
 Marlene McGehee
 Victoria McGehee
 Kelsey McKeag
 Stephen T. McKimmey
 Sabrina and Cleon McKnight
 Elizabeth K. McMurphy
 Chris Mikesell
 Anna Grace Miller
 Brandon Miller
 Clare Milliken

Kelly A. Moore
 Kristin Moore and Kyle Nathan
 Alyssa-Rhae Navin
 Latha K. Nehru
 Nancy Neuhoff
 Kenneth Nunez
 Jeannette Olazagasti
 Matthew Osborne
 Peter Augustus Owen
 Wolf S. Ozarow
 Derisa Payne
 Laura Pendergrass
 Alex M. Perez
 Ivan Perez-Rossello
 Meredith Perot
 Laura L. Pickens
 Lindsay K. Poppenhagen
 Emmaline Potter
 Kelsey Alexandra Powell
 Lupe Pozas
 Bhavesh Pranav
 Rodney B. Pratz
 Richard J. Rappuhn
 Derek Rascon
 Rosilyn Rayborn
 Genesis Reed
 Jocelyn and Adam Rigel
 Nicole D. Roberts
 Lauren C. Robertson
 Lauren Rodgers
 J R Rodriguez
 Holly H. Roozrokh
 Elizabeth G. Rourke
 Lindsey Rubin
 Morgan Salmon
 Kathleen F. Sams
 Melanie and Augustine Sanders
 Lauren Savage
 Justin J. Schmid
 Rachel Schulte
 Sean Sheahan
 Laetitia L. Sherman
 Alexandria Smith
 David L. Spann
 Kristanya and Jason A. Stangel
 Carol A. Stedry
 Kasey L. Stricklin
 J. D. Stutler
 Bailey Summers
 Stephanie Surratt
 Daphne and Michael Sylvia
 Chloe M. Teeter
 Lacey Thurmond
 Bryan Tony
 Dr. and Mrs. Robert D. Toto
 Dr. and Mrs. Devin M. Trousdale
 Alexandra V. Truong
 Philip Trusty and Douglas Wingfield
 Elyse Uzee
 Kean Villarta

Michelle Walker
 Raleigh Ward
 Sean Wassung
 Nikki and Crayton Webb
 Kenneth Weil
 Katya N. Welch
 Larissa M. Werhnyak
 Roddrick B. West
 Christina White
 Monica H. White
 Bridgette L. Williams
 Robin N. Wilson
 Tessa Wilson
 Alex M. Yocum-Beeman
 Carlye A. Zeringue

CORPORATE SUPPORT

The following corporations have supported the Museum with cash support ranging from \$1,000 and up as of June 30, 2022.

Ameriprise Financial
 The Ben E. Keith Foundation/Ben E. Keith Company
 Cartier
 Ecolab, Inc.
 Fidelity Investments
 HALL Group
 Hibbs-Hallmark & Company
 Hunt Consolidated, Inc.
 Interceramic, Inc.
 JPMorgan Chase
 Lennox International Inc.
 Locke Lord LLP
 PNC Bank
 The Rosewood Foundation
 S&P Global Inc.
 Sewell Automotive Companies
 Systemware, Inc.
 Texas Instruments
 Texas Instruments Foundation
 Tom Thumb Good Neighbor Program
 VisitDallas
 Weaver

CORPORATE IN-KIND

Christie's Auction House
 Madison
 Perkins & Will



INSTITUTIONAL DONORS

We thank and recognize these donors for their support as of June 30, 2022.

COMMUNITY ORGANIZATIONS

Accion Cultural Espanola
 Art Bridges, Inc.
 Consulate General of the Netherlands
 Fichtenbaum Charitable Trust
 Junior League of Dallas, Inc.
 TACA
 Texas Art Collectors Organization

FOUNDATIONS

The Dallas Foundation
 The Meadows Foundation
 The Pollock Foundation
 Stephen M. Seay Foundation
 Harold Simmons Foundation

GOVERNMENT

National Endowment for the Arts
 Office of Arts and Culture
 Texas Commission on the Arts

SPECIAL EVENTS

Cumulative giving of \$500 or greater to special events is reflected as of June 30, 2022.

\$50,000-\$99,999

The Hartland & Mackie Family Foundation
 Luxury Stores at Amazon
 The Eugene McDermott Foundation
 Nancy C. and Richard R. Rogers
 Peggy and Carl Sewell/Sewell Automotive Companies
 Van Cleef & Arpels
 Randall Van Wolfswinkel

\$25,000-\$49,999

Moll and Charlie Anderson
 Jacquelin and William Atkinson
 AT&T, Inc.
 Balenciaga
 Cindy and Lindsay Brown
 Christian Dior Couture
 Christie's
 Collins Permian
 Dolce & Gabbana
 Laura and Walter Elcock
 Kelli and Gerald Ford
 Robert Hallam, Jr.
 Headington Companies
 JPMorgan Chase

Lone Star Monarchs
 Susan and Bill Montgomery
 Daffan and Doug Nettle
 PNC Bank
 Catherine and Will Rose
 Deedie Rose
 Saks
 Sidley Austin, LLP
 Vaughn O. Vennerberg II
 Vogue

\$15,000-\$24,999

The Adleta Corporation
 Gonzalo Bueno and Michael McCray
 Diane and Stuart Bumpas
 Sarah Ryan Greene and Charles V. Greene
 Debbie Heller Myers
 Adriana and Guillermo Perales
 Alana and Adrian Sada
 Emily and Stephen Summers

\$10,000-\$14,999

First Horizon Bank
 Fanchon and Howard Hallam
 Amy Warren
 Monica H. White

\$5,000-\$9,999

Sami Abboud and Ross Blackstone
 Wesley Bailey and Ryan DeLaune
 Alana and Ronald Brame
 Molly Byrne
 Cartier
 Jennifer and James Chandler
 Chanel
 Diann Contestabile
 Jennifer and John Eagle
 Pam and Jeffrey S. Ellerman
 Cindy Feld
 Arlene Ford and Chris P. Reynolds
 Beverly and Don Freeman
 Tara Freeman
 Sabrina and Field Harrison
 Ann and Lee Hobson
 Marguerite Hoffman and Tom Lentz
 Holly Huffines
 Fern Johnson
 Sophia and Willis Johnson
 Susan and Robert Kaminski
 Jennifer and Tom Karol
 Kasey and Todd Lemkin
 Carol and John Levy
 Penny R. Loyd
 Stacey McCord
 Juliette and Mark Moussa
 Wendy and Bill Payne
 Cindy and Howard Rachofsky
 Katherine and Eric Reeves
 Nancy Cain Marcus Robertson and Sanford Robertson

Karee H. Sampson
 Marsha and Mike Scimo
 Gowri and Alex Sharma
 Amanda and Charlie Shufeldt
 SOCO Gallery
 Jo and Andre Staffelbach
 Anne and Steve Stodghill
 Gayle Stoffel
 Elisa and Stephen Summers
 Tayler Walter and Alejandro Laplana
 Christen and Derek Wilson

\$2,000-\$4,999

Sheryl Adkins-Green and Geoff Green
 Zoe Bonnette
 Ann W. Brookshire
 Carpenters Workshop Gallery
 Bela and Chase Cooley
 John Dayton
 Joan L. Germany
 Mrs. Mark Stewart Geyer
 Linda Jenkins
 Joyce S. Lacerte
 Patricia McDonough
 Tracee Nichols
 Jessica and Dirk Nowitzki
 Clare Pardue
 Elizabeth C. Patterson
 Therese and Chris Rourk
 Suzanne S. Simons

\$1,000-\$1,999

Stacey J. Angel
 Benchmark Bank
 Mrs. Robert J. Bigham, Jr.
 Mary M. Black
 Regina Bruce
 Lucy and Thomas Burns
 Nancy C. Cates
 Jan L. Clay
 Mr. and Mrs. William L. Cravens
 Lorna Crocker
 Noa Dowl
 Rusty Duvall
 Louise S. Griffeth
 Sila N. Grogan
 Elizabeth P. Gunby
 Juli Harrison
 Laura K. Kaufman
 Christine H. McKenny
 Mary B. Meadows
 Dian Moore
 Marcia and Jonathan Sobel
 Debbie Stewart
 Natalie Taylor
 Susan Watts
 Lauryn G. White
 Joel Wieneke



\$500-\$999

Pat Altschuler
 Fonda S. Arbetter
 Ann Griffith Ash
 Cindy Avroch-Rosenthal
 Dorothy H. Bjorck
 Mr. and Mrs. Noel Braniff
 Lucy M. Buchanan
 Lynn Buxton
 Suzanne A. Caruso
 Francine W. Cashen
 Kim Dale
 Suzette Derrick
 Erin Dickes
 Sheila M. Durante
 Barbara L. Durham
 Maria Cristina Esteves-Jaramillo
 Hollye C. Fisk
 Nancy W. Fitzwater
 Susan Norwood Flynn
 Jill and Bruce Goldberg
 Joyce Goss
 Ilene Greene
 Mary S. Griggs
 Diana Gutman
 Dr. and Mrs. Mark A. Hardin
 Jeri Harvin
 Kathy Helm
 Marian Hines
 Barend Hino
 Sylvia Hunt

Linda Ivy
 Doris Jacobs
 Jode Johnson
 Mrs. Stuart A. Jones
 Patricia Kane
 Joni B. Krieg
 Carla N. Lindley
 Patty Lovvorn
 Janna Muse
 Katherine Phillips
 Carol S. Placido
 Norma Quintero
 Carol Resnick
 Kathleen M. Rosenberry
 Deborah Ryan
 Susan Scullin
 Alisa M. Sell
 Mrs. George Shutt
 Betsy Simpson
 Tricia Sims
 Mrs. John F. Skelton III
 Mrs. Frank Oliver Sloan
 Mrs. Larry David Stuart, Jr.
 Elizabeth Taylor
 Patty J. Turner
 Mrs. Peter Weeks
 Marilyn H. Willems
 Dixie Ann Wilson
 Renee Winter
 Helen Wong
 Peggy J. Zadina

MUNGER SOCIETY

The Munger Society consists of benefactors who have included the Museum in their estate plans through bequests, promised gifts of art, life income gifts, charitable lead trusts, life insurance policies, or retirement plans.

Anonymous (3)
 Naomi D. Aberly and Laurence H. Lebowitz
 Mr. and Mrs. Charles M. Best II
 Mr. and Mrs. Frank W. Blue
 Mr. and Mrs. Daniel D. Boeckman
 Elizabeth Boeckman
 Michal Boothe
 Mr. and Mrs. Edward O. Boshell, Jr.
 Carole Braden and Vera LoCurto*
 Barbara and John A. Buxton
 Kay and Elliot Cattarulla
 Barbara W. Charlton
 Marie and John Houser Chiles
 Mrs. Allen B. Cobb
 Alessandra Comini
 Sally Copass-Jackson and Hal Jackson
 Elizabeth Perry Courville
 Betty Jo Taylor Cox
 Karen and Kevin Crowder, Jonathan Crowder
 Mrs. Robert H. Dedman
 Charron Denker
 William C. Estes
 Amy Faulconer
 Stanley Feld and Cecelia Feld
 Robby Goodman
 Mr. and Mrs. Jeremy L. Halbreich
 Tim Hanley
 Marguerite Steed Hoffman
 Jay M. Ihrig
 Kim Jordan
 Ellen Lindsey Key
 Martha McCarty Kimmerling
 Mr. and Mrs. C. Richard Kramlich
 Helen W. Lansburgh
 William Leazer
 Mark Leonard
 Joy and Ronald Mankoff
 Mrs. Stanley Marcus
 Charlene C. and Tom* F. Marsh
 Mr. and Mrs. C. Thomas May, Jr.
 Charles Dee Mitchell
 Joyce and Harvey Mitchell
 Carl A. Niendorff
 Jay W. Oppenheimer
 David T. Owsley
 Sidney Perutz
 Bonnie Pitman and David Gelles
 Harry and Peggy Ploss Charitable Trust
 Robert G. Pollock*
 Dan Pritchett
 Allen and Kelli Questrom

Cindy and Howard E. Rachofsky
 Paul Radman, D.D.S.
 William B. Rodriguez
 Lysa and Greg Rohan
 Catherine and Will Rose
 Deedie Potter Rose
 Candace Rubin
 Dr. and Mrs. Armond G. Schwartz
 Lynn Segal
 Mrs. George Shutt
 Jewel Stern
 Gayle Stoffel
 Sandra L. Streng
 Sharman Beasley Vesecky, Ed.D.
 Suzanne Weaver
 Karen Erxleben Weiner
 James F. Weldon
 Sharon and Michael Young

* Deceased

RESTRICTED FUNDS

The following donors have supported the Museum with commitments and gifts of \$1,000 or greater to restricted funds in FY 2022.

\$1,000,000 AND ABOVE

Anonymous
 The Hartland and Mackie Family Foundation†
 Marguerite Hoffman and Tom Lentz†
 Estate of William B. Jordan and Robert Dean Brownlee
 Mrs. Stanley Marcus†
 The Eugene McDermott Foundation†
 O'Donnell Foundation
 Cindy and Howard Rachofsky†
 Catherine and Will Rose†
 Deedie P. Rose†
 Peggy and Carl Sewell†
 Gayle Stoffel†

\$500,000-\$999,999

Jorge L. Baldor†
 The S. Roger Horchow Family†
 Nancy C. and Richard R. Rogers†

\$250,000-\$499,999

Cartier
 Ann and Lee Hobson†
 Interceramic†
 Mary Noel and Bill* Lamont†
 Susan and Bill Montgomery†
 Ginger Murchison Foundation†
 The Lupe Murchison Foundation†



\$100,000–\$249,999

J. Patrick Collins†
 Mary Anne Cree*†
 Durham Family Foundation†
 Estate of Gayle Fogelson
 The Estate of Marten Klop
 David T. Owsley/Alvin and Lucy Owsley Foundation
 PNC Bank†
 Michael L. Rosenberg Foundation
 Texas Instruments Foundation

\$50,000–\$99,999

Accion Cultural Espanola
 E. Rhodes and Leona B. Carpenter Foundation
 Fichtenbaum Charitable Trust
 Debra and Eric Green
 Sewell Automotive Companies
 Marcia and Jonathan Sobel

\$25,000–\$49,999

Christie's
 Dallas Art Fair Foundation
 Charron Denker
 Rusty and Bill Duvall†
 Benjamin Khakshour
 Kyoung Lee
 Lara Lerner
 The Pollock Foundation

\$10,000–\$24,999

Sheryl Adkins-Green and Geoff Green
 Zoe and David Bonnette
 Susan Bonsell
 Hibbs-Hallmark and Company
 Jun II and Jae Sun Kwun†
 National Endowment for the Arts
 Clifford J. Risman
 David G. Rogers
 Mr. and Mrs. John T. Sughrue
 Debra Witter and Scott Chase

\$5,000–\$9,999

Mr. and Mrs. Gil J. Besing
 James W. Blake
 Foley & Lardner LLP
 The Estate of Henry Hawley III
 Robert Lowinger
 Fraser E. Marcus
 Dr. and Mrs. Albert D. Roberts
 Richard Ronzetti
 Lizzie and Dan Routman
 Mr. and Mrs. Alex N. K. Sharma
 Teresa Tsai

\$1,000–\$4,999

Mr. and Mrs. Bill Duncan
 The Green Family Foundation
 Howard Klion

Mr. and Mrs. C. Thomas May, Jr.
 Michael Wynne

* Deceased

† We acknowledge the generous commitments to the Advancement Initiative starting in 2018.

SPECIAL INITIATIVES

The following donors have supported the Museum with commitments of \$1,000 or greater toward special initiatives starting in 2018.

\$1,000,000 AND ABOVE

Mr. and Mrs. Donald S. Freeman, Jr.
 The Hartland and Mackie Family Foundation
 Marguerite Steed Hoffman
 The Eugene McDermott Foundation
 Cindy and Howard Rachofsky
 Catherine and Will Rose
 Deedie Rose
 Peggy and Carl Sewell
 Gayle Stoffel

\$500,000–\$999,999

Jorge L. Baldor
 Melissa and Trevor Fetter
 Ann and Lee Hobson
 The S. Roger Horchow Family
 Mary Noel and Bill* Lamont
 Nancy C. and Richard R. Rogers

\$250,000–\$499,999

J. Patrick Collins
 Mary Anne Cree*
 Durham Family Foundation
 Laura and Walter Elcock
 Timothy C. Headington
 Interceramic
 Susan and Bill Montgomery
 Ginger Murchison Foundation
 The Lupe Murchison Foundation
 Nancy Shutt

\$100,000–\$249,999

Jennifer and John Eagle
 The Pollock Foundation
 Vaughn O. Vennerberg
 Sharon and Michael Young

\$50,000–\$99,999

Tom Fagadau
 Graham Williford Foundation for American Art

\$25,000–\$49,999

Claire Dewar
 Rusty and Bill Duvall
 PNC
 Alana and Adrian Sada

\$10,000–\$24,999

Sheryl Adkins-Green and Geoff Green
 Elaine and Neils Agather
 Deanna and Thaddeus Arroyo
 Joe M. and Doris R. Dealey Family Foundation
 Mr. and Mrs. Michael E. Dee
 Pam and Jeffrey Ellerman
 Arlene Ford and Chris P. Reynolds
 Jae Sun and Jun II Kwun
 Lucilo Peña and Lee Cobb
 Carolyn and Karl Rathjen
 Greg A. Venker

\$5,000–\$9,999

Mr. and Mrs. Jeremy L. Halbreich
 Mr. and Mrs. George T. Lee, Jr.
 Venu and Manju Menon
 Lizzie and Dan Routman
 Mr. and Mrs. Alex N. K. Sharma

\$1,000–\$4,999

Shonn and Clarence* Brown
 Sophia Johnson and Willis Johnson
 Monica M. Purdy and Torbejorne E. Purdy

* Deceased

SPECIAL EXHIBITION SUPPORT

We recognize the following donors who made gifts of \$1,000 or more in support of special exhibitions during FY 2022.

\$100,000 AND ABOVE

Cartier
 PNC Bank
 Texas Commission on the Arts
 Texas Instruments

\$50,000–\$99,999

Accion Cultural Espanola
 Sewell Automotive Companies

\$25,000–\$49,999

Lisa and Clay Cooley
 Nancy Dedman
 Laura and Walter B. Elcock
 JPMorgan Chase



The Pollock Foundation
Nancy C. and Richard R. Rogers
Sogand Shoja
Gayle B. Stoffel
VisitDallas

\$15,000-\$24,999

Anonymous
Bela and Chase Cooley
Hibbs-Hallmark and Company
Christina and Sal Jafar II
National Endowment for the Arts
Catherine and Will Rose
Deedie P. Rose
Vaughn O. Vennerberg II
Debra Witter and Scott Chase

\$10,000-\$14,999

Roheen Ahsan
Mr. and Mrs. Stuart M. Bumpas
Mr. and Mrs. Thomas P. Burns
Cami and John Goff
Barbara T. Lemmon
Susan and Bill Montgomery
Adriana and Guillermo Perales
Amanda and Charlie Shufeldt
Nancy Shutt

\$5,000-\$9,999

Consulate General of the Netherlands
Mr. and Mrs. Michael E. Dee
Patti L. Elliott
Kristin and James Hallam
Mr. and Mrs. Jerry W. Jones
Mr. and Mrs. Terry A. MacRae
Cindy and Howard Rachofsky

\$1,000-\$4,999

Ciara Cooley
Mr. and Mrs. James R. Huffines
Louise and Charles Marsh
Courtney and Charlie Petit

ARTS & LETTERS LIVE

Arts & Letters Live salutes its 2022 sponsors, partners, and Series Supporters.

ANNUAL SERIES SUPPORTERS

\$10,000 AND ABOVE
Jill C. Bee
Phillip Theodore Bee Trust
Hersh Foundation

\$2,500-\$4,999

Emily and Jason Cassady
Abbé Patton
Karen and Mike Tankersley
Victoria and Jack Tutterrow
Donna Wilhelm

\$1,000-\$2,499

Deborah Armstrong
Kathryne Bishop
Boeckman Family Foundation
Robert Bossard
Susan Brown and Bill McCoy
Kay and Elliot Cattarulla
Barbara A. Davis
Cindy DiPonio
Jane and Greg Greene
M. Jean Greenlaw
Edward R. Howard
Melinda and Jim Johnson
Cindy and George Jones
Carol Levy
Mary Lewis
Roy R. Luevano
Regina Montoya and Paul Coggins
Dana Nearburg
Vicki Petersen
Jennifer and Joel Proksch
Deedie Rose
Candace Rubin
Cynthia and John Rutherford
Darren Stanley and Paul Wackym
Susan Tanner
Ellen Wood

\$500-\$999

Suzanne Aberly
Teresa L. Byrd
David Cowart
Keith Einstein
Sharon and Ben Fountain
Ronald J. Franke
Ann S. Sentilles

**ARTS & LETTERS LIVE
ENDOWMENT SUPPORT**

Kay Cattarulla Endowment for the Literary
and Performing Arts
McGee Foundation Arts & Letters Live Endowment
Fund at the Dallas Museum of Art

COMMUNITY PARTNERS

Big Thought
The Black Academy of Arts and Letters
Break Bread, Break Borders
Center for Asian Studies at UT Dallas
Crow Museum of Asian Art at the University
of Texas at Dallas

Dallas Literary Festival presented by Southern
Methodist University
Dallas Truth, Racial Healing & Transformation
Fairmont Hotel
International Rescue Committee
KERA
Young Leaders, Strong City

PROMOTIONAL PARTNERS

Against the Grain Productions
The Black Academy of Arts and Letters
Center for Asian Studies at the University of Texas
at Dallas
Crow Museum of Asian Art
Dallas Institute of Humanities and Culture
Dallas Literary Festival
The Dallas Opera
Dallas Symphony Orchestra
Dallas Truth, Racial Healing & Transformation
DeColores Collective
The Dock Bookshop
Friends of the Dallas Public Library
International Tuba-Euphonium Association
KERA
Latino Cultural Center
Pan-African Connection
PaperCity Magazine
PEN America Dallas/Fort Worth
TACA
Texas Library Association
Texas Women's Foundation
Trinity River Audubon Center

ANNUAL FUND DONORS

Unrestricted gifts made to the Annual Fund support the operations and mission of the DMA.

\$25,000 AND ABOVE

James and Gayle Halperin Foundation

\$5,000-\$24,999

John Carroll
Lois Mills Durden Charitable Trust
Lyda H. Hill
Helen and Brendan McGuire
Allen D. Place, Jr.
Wiegiers Family Foundation
Zierk Family Foundation

\$2,500-\$4,999

Mr. and Mrs. Jason Cassady
John A. Henry III
Mary Noel Lamont
Mr. and Mrs. Mark C. McKinley



Abbé L. Patton
Bonnie Pitman and David Gelles
University of Texas at Dallas

\$1000-\$2,499

- Alixandra C. Baker
- Stuart D. Baker
- Mr. and Mrs. Jon Bauman
- Robert F. Bossard
- Karen and Tommy Campbell
- Jennifer and James Chandler
- Carol and Don Glendenning
- Helen Hobbs
- Mr. and Mrs. Paul Jackson
- Melinda and Jim Johnson
- Mr. and Mrs. Douglas Richard Krueger
- Joy and Ronald Mankoff
- Michael A. Myers
- Mary Nelson
- Angela D. Paulos
- Mr. and Mrs. Todd Platt
- Carroll R. Roberts and Truett Roberts
- Deedie Rose
- Gracie T. Rury
- Warren Stephens
- Mr. and Mrs. Ryan Van Haastrecht
- Ralph Weber
- Linda Wiley
- Robert Simmons Williams

\$500-\$999

- Sheryl Adkins-Green and Geoff Green
- Mr. and Mrs. Jeff C. Chavez
- Mr. and Mrs. George W. Coleman
- The Dallas Woman's Club
- Robert W. Dupuy
- Mr. and Mrs. Monroe Helm III
- Rob Henry
- Mr. and Mrs. W. Herbert Hunt
- Fern Johnson
- Raj Rao Kathi
- Jeanette Luther
- Mr. and Mrs. Wilson K. Mason
- Susan McIntyre and Trent Emory Cantrell
- Suzanne G. Milot
- James T. Norwood and Cecilia S. Norwood
- Danna Orr
- Dr. and Mrs. Charles R. Rosenfeld
- John and Cynthia Rutherford
- Lynn S. Sears
- Nina Trail
- Karen Westergaard
- Mary and Harold Zlot





BOARD OF TRUSTEES

- | | | |
|-----------------------|-------------------------|-------------------------|
| Sheryl Adkins-Green | Melissa Foster Fetter | Venu Menon |
| Thaddeus Arroyo | Arlene Ford | Jessica Nowitzki |
| Alexandra Bacalao | Kelli Ford | Adriana Perales |
| Flauren Bender | Gela Gallardo | Arthur Primas |
| Brian Bolke | Nancy Halbreich | Cindy Rachofsky |
| Shonn Brown | Kathryn W. Hall | Harry Robinson, Jr. |
| Gonzalo Bueno | Robert Hallam, Jr. | Nancy C. Rogers |
| Stuart M. Bumpas | Thomas Hartland-Mackie | Catherine Marcus Rose |
| Lucy Burns | Ann Hobson | Deedie P. Rose |
| Thomas C. Campbell | Eric Johnson | Dan Routman |
| Jennifer Chandler | Fern Johnson | Adrian Sada |
| J. E. R. Chilton III* | Sophia Johnson | Peggy Sewell |
| Jan Clay | Elisabeth Karpidas | Manjusha Shankaradas |
| Phillip Collins | Aasem Khalil | Gowri Sharma |
| Mary McDermott Cook | Jun Il Kwun | Sogand Shoja |
| Nancy Dedman | William M. Lamont, Jr.* | Amanda Shufeldt |
| Shelly Dee | George T. Lee, Jr. | Nancy Shutt |
| John R. Eagle | Barbara Thomas Lemmon | Michelle Thomas |
| Walter Elcock | Thomas W. Lentz | Vaughn O. Vennerberg II |
| Jeffrey S. Ellerman | Carol R. Levy | Sharon Young |
| Brent English | Louise Marsh | |
| Amy Faulconer | Brendan McGuire | * Deceased |



STANDING COMMITTEES

EXECUTIVE COMMITTEE

OFFICERS

Catherine Marcus Rose
President

Walter Elcock
Interim Chairman

William M. Lamont, Jr.*
Chairman

Gowri Sharma
Vice President

Peggy Sewell
Secretary

Jun Il Kwun
Treasurer

AT-LARGE MEMBERS

Thaddeus Arroyo

Stuart Bumpas

Mary McDermott Cook

Shelly Dee

John Eagle

Walter Elcock

Jeff Ellerman

Arlene Ford

Tom Lentz

Cindy Rachofsky

Deedie Rose

Vaughn O. Vennerberg II

STANDING COMMITTEES

AUDIT COMMITTEE

Sharon Young,
Chair

Shonn Brown

Stuart Bumpas

Walter Elcock

Tom Maddrey[◇]

Julie Musselman[◇]

Jun Il Kwun

Catherine Rose

Manjusha Shankaradas

Greg Venker[◇]

Vaughn Vennerberg

BUDGET AND FINANCE COMMITTEE

Brendan McGuire,
Chair

John Carpenter[◇]

Walter Elcock

Arlene Ford

Thomas Hartland-Mackie

Marguerite Hoffman[◇]

Aasem Khalil

Jun Il Kwun

Max Lamont[◇]

Ken Lee[◇]

Meghan Montana[◇]

Richard Pollock[◇]

Howard Rachofsky[◇]

Nancy Rogers

Catherine Rose

Adrian Sada

Peggy Sewell

John Steinmetz[◇]

Sharon Young

BUILDING AND GROUNDS COMMITTEE

Lucy Burns,
Chair

Gonzalo Bueno

Jennifer Eagle[◇]

Walter Elcock

Kathryn Hall

Robert Hallam, Jr.

Bob Kaminski[◇]

Michael Osburn[◇]

Lucilo Peña[◇]

Howard Rachofsky[◇]

Catherine Rose

Deedie Rose

Gowri Sharma

Jay Shinn[◇]

COMMITTEE ON COLLECTIONS

Peggy Sewell,
Chair

Randy Best[◇]

John Carpenter[◇]

Mary Cook,
Ex-Officio

Fernando de Leon[◇]

Shelly Dee

Claire Dewar[◇]

Walter Elcock

Ann Hobson

Gene Jones[◇]

George Lee, Jr.,
Ex-Officio

Tom Lentz

Cristina Lynch[◇]

Charlene Marsh[◇]

Suzanne McGee[◇]

Jessica Nowitzki

David Owsley,
Honorary[◇]

Margot Perot[◇]

Arthur Primas

STANDING COMMITTEES

Howard Rachofsky[◇]
Catherine Rose
Deedie Rose
Gayle Stoffel[◇]

DEVELOPMENT COMMITTEE

Amanda Shufeldt,
Chair
Flauren Bender
Jennifer Chandler
Bela Cooley[◇]
Walter Elcock
Marlena English[◇]
Gunjan Jain[◇]
Louise Marsh
Hallie Lamont[◇]
Libby Ornani[◇]
Catherine Rose
Cathy Saxon[◇]

COMPENSATION COMMITTEE

Catherine Rose,
Chair
William M. Lamont, Jr.*
Brendan McGuire

INVESTMENT COMMITTEE

Jun Il Kwun,
Chair
Brenda Berry
Walter Elcock
Lee Hobson[◇]
Barbara Thomas Lemmon
Venu Menon
Dan O'Grady[◇]

Howard Rachofsky[◇]
Catherine Rose
Will Rose[◇]
Ron Steinhart[◇]
Vaughn Vennerberg
Clinton Warren[◇]
Sharon Young

LEARNING & ENGAGEMENT COMMITTEE

Carol Levy,
Chair
Alexandra Bacalao
Mara Richards Bim[◇]
Jan Clay
Sylvia Cespedes[◇]
Barb Durham[◇]
Laura Elcock[◇]
Walter Elcock
Maria Cristina
Esteves-Jaramillo[◇]
Bev Freeman[◇]
Katherine Haskel[◇]
Jin-Ya Huang[◇]
Fern Johnson
Elisabeth Karpidas
Paula Minnis[◇]
Kelli Questrom[◇]
Serena Ritch[◇]
Harry Robinson, Jr.
Catherine Rose
John Spriggins[◇]
Michelle Thomas
Richard Thomas[◇]
Sofia Bastidas Vivar[◇]
Martha Wells[◇]

MARKETING COMMITTEE

Venu Menon,
Chair
Sheryl Adkins-Green
Thaddeus Arroyo
Shelly Dee
Walter Elcock
Brent English
Gela Gallardo
Nevin Grinnell[◇]
Marissa Jarratt[◇]
Amber LeFrance[◇]
Debora Manusama[◇]
Jane McGarry*
Adriana Perales
Catherine Rose
Dan Routman
Tiffany Saxton[◇]

COMMITTEE ON TRUSTEES & GOVERNANCE

Sophia Johnson,
Chair
Walter Elcock
Jeff Ellerman
Jessica Nowitzki
Adriana Perales
Cindy Rachofsky
Catherine Rose
Amanda Shufeldt

* Deceased
[◇] Non-trustee



**EVENT CHAIRS
AND VOLUNTEER LEADERSHIP**

ART BALL

Saturday, April 9, 2022

Brian Bolke
Chair



ART IN BLOOM

Monday, March 7, 2022

Sila Grogan
Chair

Pat McDonough
Co-Chair

Peggy Sewell
Honorary Chair



DMA LEAGUE

Jan Clay
President



FAMILY FORUM

Flauren Bender
Co-Chair

Louise Marsh
Co-Chair

Libby Ornani
Co-Chair



JUNIOR ASSOCIATES

Marlena and Brent English
Co-Chairs

**EVENT CHAIRS
AND VOLUNTEER LEADERSHIP**



**COLLECTIONS**

Isabel Stauffer
Director of Collections Management

Erick Baker
Preparator, Mount Maker

Sean Cairns
Preparator, Collections & Exhibitions

Alicia Chavez†
Associate Registrar for Exhibitions

Tricia Earl
Registrar for Loans

Karen Fulton
Preparator

Carol Griffin
Senior Registrar for Acquisitions and Deaccessions

Julie Herrick
Associate Registrar for Loans & Exhibitions

David Hill
Preparator

Mike Hill†
Senior Preparator, Special Exhibitions

John Lendvay†
Head Preparator

Martha Lopez
Gallery Maintenance Specialist

Elia Maturino
Gallery Maintenance Assistant

Laurie McGill
Administrative Assistant to the Director of Collections

Mary Nicolett
Senior Preparator, IPM Coordinator

Justin Penov
Preparator Team Lead

Brian Peterman
Lighting Preparator

Katie Province
Associate Registrar for Collections and Exhibitions

Jean Rowe
Collections Assistant

Claudia M. Sánchez
Associate Registrar for Exhibitions

Russell Sublette
Senior Preparator, Head Mount Maker

Shannon Sweeney
Associate Registrar for Collections

Doug Velek
Senior Preparator, Framer

CONSERVATION

Fran Baas
Interim Chief Conservator

Laura Hartman
Paintings Conservator

Elena Torok†
Associate Conservator

CURATORIAL

Dr. Nicole R. Myers
Interim Chief Curator and The Barbara Thomas Lemmon Senior Curator of European Art

Dr. Anna Katherine Brodbeck
Hoffman Family Senior Curator of Contemporary Art

Dr. Anne Bromberg†
The Cecil and Ida Green Curator of Ancient and Asian Art

Christine Burger
Research Assistant

Sue Canterbury
The Pauline Gill Sullivan Curator of American Art and Interim Curator of Works on Paper



Dr. Mark A. Castro
The Jorge Baldor Curator of Latin American Art

Vivian Crockett[†]
Assistant Curator of Contemporary Art

Dr. Heather Ecker[†]
The Marguerite S. Hoffman and Thomas W. Lentz Curator

Charlotte Gaillet[†]
McDermott Intern for American Art

Taylor Glennon[†]
Curatorial Assistant

Dr. Vivian Li
The Lupe Murchison Curator of Contemporary Art

Martha MacLeod
Senior Curatorial Administrator

Rebecca Merriman-Goldring[†]
Intern for Arts of the Americas

Veronica Myers[†]
McDermott Intern for Contemporary Art

Hilde Nelson[†]
Curatorial Assistant

Dr. Michelle Rich
Assistant Curator of the Arts of the Americas

Kellie Riggs[†]
McDermott Intern for Modern Jewelry

Meg Roppolo
Curatorial Assistant

Sarah Schleuning
The Margot B. Perot Senior Curator of Decorative Arts

Megan True[†]
Dedo and Barron Kidd McDermott Graduate Intern

Dr. Roslyn A. Walker
Senior Curator of the Arts of Africa, the Americas, and the Pacific and The Margaret McDermott Curator of African Art

Alyssa Wood[†]
Curatorial Assistant

DEVELOPMENT

Cynthia Calabrese
Chief Development Officer

Selena Anguiano[†]
Foundation Relations Manager

Violet Correa
Development Coordinator

Hannah Dale
Institutional Giving Coordinator

Yared Dibab
Development Information Services Assistant Manager

Brooke Dority[†]
Director of Special Events

Yemi Dubale
Manager of Development Information Services

Larissa Fong[†]
Manager of DMA Circle

Edwina Gonzalez[†]
Manager of Special Events

Isabel Randolph
Director of Special Events

Lauren Hembree[†]
Corporate Partnership Coordinator

Caroline Irvin
Major Gifts Officer

Jessica Kyle
Annual Programs Coordinator

Bethany McCarthy[†]
Senior Manager of Advancement Services & Donor Research

Susan McIntyre
Senior Director of Major Gifts

Patrick Pelz
Senior Manager of Donor Operations & Analytics

Belem Perez De La Fuente
Gift Processing Assistant

Julia Soto[†]
Assistant Manager of Gift Processing

Sarah Sutton[†]
Director of Development

Reese Threadgill[†]
Manager of Corporate Giving

Ingrid Van Haastrecht
Senior Director of Development Operations & Institutional Giving

Lisa Winkley
Manager of Special Events

DIRECTOR'S OFFICE

Dr. Agustín Arteaga
The Eugene McDermott Director

Tamara Wootton Forsyth
The Marcus-Rose Family Deputy Director

Christina Burns[†]
Chief of Staff

Sarah Denny Golab[†]
Chief of Staff

Kathy Everitt
Manager of Board Relations

Vivian Hunter
Executive Assistant

Lacy Molina
TI Strategic Management Fellow

Sara Ousby
Director of Strategic Initiatives

Sergio Soto[†]
Executive Assistant

DMA STORE

Alison Silliman
Director of Retail

Rachael Armstead
Sales Associate

Marta Gonzalez
Assistant Store Manager

Jason Maldonado[†]
Sales Associate

Elisette Marin
Sales Associate

Alex Montenegro
Shipping and Receiving Processor

Marissa Negrete
Museum Store Supervisor

Robert Opel
Sales Associate

Maria Pulido[†]
Sales Associate

Bryony Smith
Sales Associate

EDUCATION

Stacey Lizotte
The Allen and Kelli Questrom Center for
Creative Connections Director of Education

Claire Moore[†]
The Allen and Kelli Questrom Center for
Creative Connections Director of Education

Carolyn Bess[†]
Director of Arts & Letters Live

JC Bigornia
Director of Community Engagement

Mary Ann Bonet[†]
Director of Community Engagement

Melissa Brito-Alvarez
Manager of Access Programs and Resources

Kerry Butcher[†]
C3 Gallery Manager

Paulina Dosal-Terminel
Manager of Community Programs

Cristina Echezarreta
Manager of Adult Programs

Leslie Gardner[†]
McDermott Intern for Family and Access
Programs

Denise Gonzalez
Senior Manager of Family and Early Learning
Programs

Sara Greenberg
Manager of Adult Programs

Leah Hanson
Director of Family, Youth, and School
Programs

Carolyn Hartley
Administrative Coordinator for Arts & Letters
Live

Emily Hogrefe-Ribeiro
Manager of School Programs

Adero Kauffmann-Okoko[†]
McDermott Intern for Adult Programs and
Arts & Letters Live

Carolee Klimchock[†]
Program Manager for Arts & Letters Live

Jennifer Krogsdale
Program Manager for Arts & Letters Live

Rebekah Kubosumi
Manager of School Outreach Programs

Bora Leiby
Education Coordinator

Sarah Lennox[†]
McDermott Intern for Family and Access
Programs

Adriana Martinez-Mendoza
Manager of Teen Programs

Lindsay O'Connor[†]
Manager of School Programs

Michelle Reyes
C3 Gallery Manager

Ariana Robles[†]
McDermott Intern for Education

Jessica Thompson-Castillo[†]
Manager of Teen Programs

Cecilia Torres[†]
Manager of School Outreach Programs

Bernardo Velez Rico[†]
Manager of Off-Site School Programs

Michelle Witcher
Senior Program Manager for Arts & Letters
Live

EXHIBITIONS AND INTERPRETATION

Sabrina Lovett
Director of Exhibitions and Interpretation

Joni Wilson-Bigornia[†]
Director of Exhibitions and Interpretation

Kate Aoki
Head of Exhibition Design

Amandine Bandelier
Exhibitions Coordinator

Amanda Dietz Brooks
Exhibitions Manager

Suny Cardenas-Gomez[†]
McDermott Graduate Intern for Interpretation

Rachael Huszar
Exhibition Designer

Lance Lander
Senior Manager of Gallery Technology

Jaclyn Le[†]
Senior Graphic Designer

Emily Schiller
Senior Manager of Interpretation

Peter Skow
Spanish Language Editor and Translator

Veronica Treviño Salinas
Exhibitions and Publications Coordinator

Queta Moore Watson
Senior Editor

Emily Wiskera
Interpretation Specialist

Eric Zeidler
Publications Manager

FACILITY OPERATIONS AND SECURITY

Ken Bennett
Director of Facility Operations and Security

Brenda Anastasio[†]
Operations Maintainer

Claudia Brewer
Security Control Room Officer

Marylyn Burnett
Security Control Room Officer

Tasha Burns
Operations Supervisor

Sylvia Chaney
Control Room Supervisor

John Claire
Building and Facilities Manager

Keiaira Cox
Operations Maintainer

Darrell Dubose
Painter

Tara Eaden
Operations Manager

Sandro Feliz[†]
Operations Maintainer

Nellie Frayre
Operations Maintainer

Jakarra Gilbert[†]
Security Control Room Officer

Luis Gomez
Control Room Relief Supervisor

Alesia Harrison
Supply, Shipping, and Receiving

Josh Harstrom
Carpentry Manager

Shalamar Jackson
Security Manager

Caleb Kelley[†]
Control Room Relief Supervisor



Inocente Martinez
Control Room Officer

Andrew McAda
Security Control Room Officer

Tina McQueen
Security Control Room Officer

Alfreda Mitchell
Supply, Shipping, and Receiving

Benjamin Morales
Control Room Relief Supervisor

Maria Moreno
Operations Maintainer

Luke Peterson
Building Assistant

Gloria Ramirez
Operations Supervisor

Efren Ramirez
Operations Maintainer

Luz Maria Rico Cortes
Operations Maintainer

Jesus Rivera
Painter

Jeremiah Roblez
Control Room Supervisor

Jaime Rojas
Security Control Room Officer

Jesse Romero
Operations Maintainer

Narvas Scates
Security Control Room Officer

Lameeka Washington[†]
Operations Maintainer

Vincent Williams, Jr.[†]
Control Room Relief Supervisor

Lena Wright
Operations Maintainer

John Young
Operations Supervisor

FINANCE AND ACCOUNTING

Sally Pietsch
Chief Financial Officer

Karen Black
Controller

Daniel Castro[†]
Controller

Linda Kelley
Payroll Manager

Leslie Martinez
Staff Accountant

Kimberly McNiece
Senior Accountant

Cindy Peterson[†]
Senior Accountant

Angela Rogers
Manager of Accounts Payable

Linda Smith
Asset Accountant

Lincoln Butts
Gallery Attendant

Choya Campbell[†]
Gallery Attendant

Troy Camplin
Gallery Attendant Supervisor

Claudia Choy
Gallery Attendant Supervisor

Abiel Cisneros[†]
Gallery Attendant

Angele Coleman[†]
Gallery Attendant

Hanna Deme
Gallery Attendant

Katy Drabek
Gallery Attendant

Genie Enriquez[†]
Gallery Attendant

Tim Evers
Gallery Attendant

Olivia Galloway[†]
Gallery Attendant

Alondra Gamino
Gallery Attendant

David Geary
Gallery Attendant

Sarah Gomez[†]
Gallery Attendant

Isabella Gonzalez[†]
Gallery Attendant

Jared Gossett[†]
Gallery Attendant

Greg Gourley
Gallery Attendant

Dejanequa Graham[†]
Gallery Attendant

Marti Hail[†]
Gallery Attendant

Beza Haile
Gallery Attendant

GALLERY ATTENDANTS

Jennifer McCoy
Gallery Attendant Manager

Denise Augusta
Scheduling Manager

Andre Anthony
Gallery Attendant

Doris Barkins
Gallery Attendant

Douglas Baxter[†]
Gallery Attendant

Ronald Baxter
Gallery Attendant

Juan Betancourt[†]
Gallery Attendant

Aweke Beza
Gallery Attendant

Anne Bowen
Gallery Attendant

Patricia Hamra
Gallery Attendant

Brandon Harden
Gallery Attendant

Kevin Harris[‡]
Gallery Attendant

Yasmin Hernandez[‡]
Gallery Attendant

David Herrera
Gallery Attendant

Anthony Hill
Gallery Attendant

Crystal Houston
Gallery Attendant

Jasmine Howard
Gallery Attendant Supervisor

Ndukwe Ijomah
Gallery Attendant

Alemayehu Kenno
Gallery Attendant

Jessica Khazem[‡]
Gallery Attendant

Laurie Kone[‡]
Gallery Attendant

Zayda Lara
Gallery Attendant

Jake Ledbetter
Gallery Attendant

Merertu Lelissa
Gallery Attendant

Detra Lewis
Gallery Attendant

Makayla LoCicero[‡]
Gallery Attendant

Nancy Lujan
Gallery Attendant

Jonathan Martinez[‡]
Gallery Attendant

Gary Mathis[‡]
Gallery Attendant

Joyce McCloud
Gallery Attendant

Mimi Mekonnen[‡]
Gallery Attendant

Tesfalidet Melaku[‡]
Gallery Attendant

Renata Mitchell
Gallery Attendant

Norma Molina
Gallery Attendant

Ashleigh Morris[‡]
Gallery Attendant

Suni Mullen[‡]
Gallery Attendant

Sandi Newmon
Gallery Attendant

Olivia Nicholas[‡]
Gallery Attendant

Jessa Ogle[‡]
Gallery Attendant

Rachel Oney[‡]
Gallery Attendant

Alexander Parks[‡]
Gallery Attendant

Joseph Pena[‡]
Gallery Attendant

Stephanie Perez
Gallery Attendant

Elizabeth Potts[‡]
Gallery Attendant

Brenan Prukop[‡]
Gallery Attendant

Courtney Pulice[‡]
Gallery Attendant

Kelly Randall
Gallery Attendant

Ron Ray
Gallery Attendant

Ryan Richmond[‡]
Gallery Attendant

Elyana Riddick[‡]
Gallery Attendant

Jordan Rivera[‡]
Gallery Attendant

Nancy Rodriguez Rico[‡]
Gallery Attendant

Robert Saldana
Gallery Attendant

Abril Segura[‡]
Gallery Attendant

Mulualem Selassie
Gallery Attendant

Asheber Shoamanal
Gallery Attendant Supervisor

Clint Skinner
Gallery Attendant

Antwon Swanigan[‡]
Gallery Attendant Supervisor

Vicki Turner
Gallery Attendant

Christine Vail[‡]
Gallery Attendant

Feliza Vidaurri
Gallery Attendant

Genet Wako
Gallery Attendant

Steven Waldrip[‡]
Gallery Attendant

Riley Widener[‡]
Gallery Attendant

Shiree Williams
Gallery Attendant

Edward Zambrano
Gallery Attendant

GUEST SERVICES

Lesley Ayala
Guest Services Associate

Alec Barreiro[‡]
Guest Services Associate

Tammy Bradley
Receptionist

Charles Curnow[‡]
Assistant Manager of Guest Services

Alva Curry
Guest Services Associate

Cathy Davis-Famous
Guest Services Associate

Madeline Figueroa Tejada[‡]
Guest Services Associate

Laura Garcia[‡]
Guest Services Associate

Melissa Graham[‡]
Guest Services Associate

Elvis Guaman
Guest Services Associate

Betsy Langford[‡]
Guest Services Associate

Genet Mamuye
Guest Services Associate

Philippa Maples
Assistant Manager, Guest Services Operations

Cassandra Munnell[‡]
Guest Services Associate

Molly Queal[‡]
Guest Services Associate

Sebastian Robles
Guest Services Associate

Raquel Sandoval
Guest Services Supervisor

Fikirte Sima
Guest Services Associate



Brenda Trevizo
Guest Services Associate Operations

Samantha Velarde
Assistant Manager of Guest Services

HUMAN RESOURCES

Ruby Hunt[‡]
Chief Human Resources Officer

Andi Orkin
Human Resources Supervisor

Heather Phillips
Recruiter

Monica Rodriguez Sanchez
Human Resources Coordinator

Sarah Vitek Coffey
Human Resources Specialist

Ticla Wilson[‡]
Senior Human Resources Specialist

IT AND DIGITAL IMAGING

Amir Tabei
Chief Information Officer

Cameron Adkins
IT Support Specialist

Nelson Alexander[‡]
Multimedia Services Technician

Leonardo Barnes[‡]
Multimedia Services Technician

Jeff Brownlee
Senior Application Developer

Giselle Castro-Brightenburg
Digital Media Manager

Carl Daniel
Manager of Multimedia Services

Irl Ellis
Multimedia Services Technician

Brad Flowers
Head Photographer

Brian MacElhose
Collections Information Manager

Paul Molinari
Intellectual Property Manager

Dan Reaka
Information Systems Manager

Chad Redmon
Collections Photographer

John Shipman
Multimedia Services Technician

LIBRARY AND ARCHIVES

Jacqueline Allen[‡]
Director of Libraries

Kathleen Alleman
Associate Librarian

Hillary Bober
Archivist

James Glenn[‡]
Pollock Intern for the Mayer Library

Mary Leonard
Reference Librarian

Anna Rockey
Assistant Librarian for Cataloging

Jenny Stone
Librarian

Brett Williams[‡]
Cataloging Assistant

Cathy Zisk
Manager of Technical Services

MARKETING AND COMMUNICATIONS

Brad Pritchett
Chief Marketing & Communications Officer

KC Hurst[‡]
Chief Marketing and Communications Officer

Jill Bernstein[‡]
Director of Communications and Public Affairs

Trey Burns
Multimedia Producer

Hayley Caldwell[‡]
Social Media and Content Manager

Clara Cobb[‡]
Senior Marketing Manager

Lizz DeLera
Creative Director

Janet Hitt
Director of Marketing

Vynsie Law
Senior Art Director

Estefany Mendoza Salazar
Content Manager

Lillian Michel[‡]
Media and Communications Specialist

Edna Monterrosa[‡]
Graphic Designer

Aschelle Morgan
Director of Communications and Public Affairs

Jackson Stanley[‡]
Marketing and Communications Coordinator

[‡] Former employee



For purposes of brevity, the financial information presented herein is derived from our audited financial statements. This excerpted information does not include the statement of cash flows or footnotes that are integral to a full presentation of the Dallas Museum of Art's financial position. A complete report of the Independent Auditors is available [here](#).



CONSOLIDATED STATEMENTS OF FINANCIAL POSITION

June 30, 2022 and 2021

ASSETS	2022	2021
Cash	\$ 5,001,566	\$ 2,860,962
Investments	18,111,488	17,087,881
Contributions receivable, net	4,707,222	6,512,313
Other receivables	1,688,609	1,321,238
Prepaid expenses and deposits	2,814,208	678,511
Other assets	238,140	197,463
Inventory, net	245,049	329,922
Contributions receivable for endowment, net	557,184	1,242,511
Investments held for endowment	233,690,014	287,967,919
Property, equipment, and books, net	8,879,987	9,618,017
Total assets	275,933,467	327,816,737

LIABILITIES AND NET ASSETS	2022	2021
Liabilities		
Accounts payable	1,070,421	593,414
Accrued expenses	2,070,142	1,967,405
Revolving line of credit	-	1,136,051
Deferred revenue	289,288	338,771
Notes payable	5,083,280	6,295,746
Total liabilities	8,513,131	10,331,387

Net Assets		
Without donor restrictions	20,183,542	27,658,560
With donor restrictions		
Restricted by purpose or time	86,768,570	130,578,239
Restricted in perpetuity	160,468,224	159,248,551
Total with donor restrictions	247,236,794	289,826,790
Total net assets	267,420,336	317,485,350
Total liabilities and net assets	\$ 275,933,467	\$ 327,816,737

CONSOLIDATED STATEMENTS OF ACTIVITIES AND CHANGES IN NET ASSETS

Year ended June 30, 2022

REVENUES, GAINS (LOSSES), AND OTHER SUPPORT	Without Donor Restrictions	With Donor Restrictions	Total
Contributions	\$ 5,460,356	\$ 10,531,696	\$ 15,992,052
In-kind goods and services	3,058,218	-	3,058,218
Government grants	2,964,321	20,000	2,984,321
Cultural organizations program	1,072,896	-	1,072,896
Auxillary activities, net	3,495,806	-	3,495,806
Special events, net	1,248,360	56,500	1,304,860
Education program	316,785	-	316,785
Net realized and unrealized gains	(3,700,963)	(53,475,176)	(57,176,139)
Interest and dividends, net	689,066	9,991,026	10,680,092
Loss on uncollectible contributions receivable	(4,703)	-	(4,703)
Other revenue	225,804	-	225,804
Net assets released from restriction	6,860,592	(6,860,592)	-
Total revenues, gains, and other support	21,686,538	(39,736,546)	(18,050,008)

FUNCTIONAL EXPENSES

Program services			
Galleries and exhibitions	14,084,290	-	14,084,290
Collections	3,504,124	-	3,504,124
Education	3,483,130	-	3,483,130
Total program services	21,071,544	-	21,071,544
Supporting services			
General and administration	6,200,557	-	6,200,557
Fundraising	3,860,197	-	3,860,197
Total supporting services	10,060,754	-	10,060,754
Total functional expenses	31,132,298	-	31,132,298

Change in net assets from operations	(9,445,760)	(39,736,546)	(49,182,306)
---	--------------------	---------------------	---------------------

OTHER INCOME AND EXPENSES

Gain on forgiveness of note payable	2,000,000	-	2,000,000
Proceeds from sales of collection items	2,853,450	(2,853,450)	-
Collection items purchased	(2,853,450)	-	(2,853,450)
Decrease in deferred obligation for pension plan	(29,258)	-	(29,258)
Total other income and expenses	1,970,742	(2,853,450)	(882,708)

Change in net assets	(7,475,018)	(42,589,996)	(50,065,014)
Net assets, beginning of year	27,658,560	289,826,790	317,485,350
Net assets, end of year	\$ 20,183,542	\$ 247,236,794	\$267,420,336

SCHEDULE OF ENDOWMENTS

Endowment funds include both donor-restricted and Board-designated funds and earnings thereon which have not yet been expended for the purposes stipulated by the donor or Board. The endowment funds are composed of the following as of June 30, 2022:

ACQUISITIONS ENDOWMENT FUNDS	ENDOWMENT
Marguerite and Robert Hoffman Endowment	\$15,607,800
Cecil and Ida Green Art Acquisition Fund	4,640,513
Amelia Lay Hodges Acquisition Fund	3,998,192
Decorative Arts Discretionary Endowment Fund	3,008,378
General Acquisitions Endowment Fund	2,741,184
Roberta Coke Camp Endowment Fund	1,915,353
African Art Acquisitions Endowment Fund	1,578,824
Gayle and Paul Stoffel Fund for Contemporary Art Acquisition	1,432,361
Textile Acquisitions Endowment Fund	1,076,392
The Stanley & Linda Marcus Endowment for the Acquisition of Latin American Art	962,185
Otis and Velma Davis Dozier Endowment Fund	540,759
Beatrice M. and Patrick E. Haggerty Endowment Fund	469,429
Mary Margaret Munson Wilcox Fund	379,861
Charron and Peter Denker Fund for Contemporary Texas Art	363,034
E.E. Fogelson and Greer Garson Fogelson Charitable Fund	340,211
Theodore and Iva Hochstim Endowment Fund	217,452
Texas Artists Endowment Fund	194,050
Laura and Walter Elcock Contemporary Art Endowment Fund	140,335
Susan Mead Contemporary Art Acquisition Endowment Fund	136,481
	39,742,794

EXHIBITION, CURATORIAL, AND CONSERVATION ENDOWMENT FUNDS

Exhibition Endowment Fund	18,380,900
William B. Jordan and Robert Dean Brownlee Endowment	6,102,276
The Hoffman Family Senior Curator of Contemporary Art	5,760,924
Freeman Family Exhibition Fund	4,222,153
Marguerite and Robert Hoffman Operating Fund	3,843,326
Modern and Contemporary Sculpture Endowment Fund	3,479,558
Lupe Murchison Curator of Contemporary Art Endowment Fund	3,311,549
The Allen and Kelli Questrom Curator of Works on Paper	3,207,936
Marcus-Rose Family Deputy Director Endowment	3,017,659
Cecil and Ida Green Curator of Ancient and South Asian Art	2,973,869

The Ellen and Harry S. Parker III Curator of the Arts of the Americas and the Pacific	2,945,402
Pauline G. Sullivan Curator of American Art Endowment Fund	2,868,770
Margaret McDermott Curator of African Art Endowment Fund	2,637,795
The Nancy & Tim Hanley Associate Curator of Contemporary Art	2,260,574
Melba Davis Whatley Endowment Fund	2,050,044
NEH Chief Conservator	1,701,052
Margot B. Perot Curator of Decorative Arts and Design Fund	1,506,091
Barbara Thomas Lemmon Curator of European Art Endowment Fund	1,472,460
Lillian Clark Curatorship for Paintings and Sculpture	1,434,903
The John Wilcox Contemporary Art Exhibition Endowment Fund	1,308,284
McDermott Conservation Endowment	1,041,375
Rosine Foundation Decorative Art Endowment Fund	716,555
Conservation Endowment Fund	638,632
Howard and Fanchon Hallam Endowment for Contemporary Art	570,035
Steven G. Alpert and Family Indonesian Art Fund	566,531
Charles Dee Mitchell Fund for Acquisitions, Exhibitions, and Conservation of Works on Paper	190,546
Jean and Bill Booziotis Fund for Design and Architecture	154,637
Exhibitionists Endowment Fund	152,429
	78,516,265

EDUCATION ENDOWMENT FUNDS

McDermott Education Endowment Fund	4,103,888
The Kelli and Allen Questrom Director of the Center for Creative Connections Education Director	3,173,885
Office of Digital Archivist	3,147,534
DMA League Director of Education Endowment Fund	3,089,313
Mayer Library Endowment Fund	2,869,619
Anonymous Program Endowment Fund	2,167,964
The Bonnie Pitman Education Endowment to Do Something New	1,711,254
Education Endowment Fund for Interpretation	1,553,640
Pollock Foundation Education Endowment Fund	1,386,126
The Alex, Charlie, Grey, Jack and Rosey Fund	1,380,756
Mildred R. and Frederick M. Mayer Librarian Endowment Fund	1,375,343
Robert J. O'Donnell Endowment Fund	978,144
Gayle Hysinger Endowment Fund for Education	736,487
Freeman Family Endowment Fund	708,409
Jeffrey A. Marcus Education Endowment Fund	701,426

Anonymous Endowment Fund	698,323
Nancy Cain Marcus Education Endowment Fund	693,322
Boshell Lecture Series Endowment Fund	654,268
Prothro Education Endowment Fund	643,463
Rosewood Corporation Teacher Education Fund	635,809
The Martha McCarty Kimmerling Fund for Education	624,783
William Randolph Hearst Endowment Fund	492,397
Christopher and Sue Bancroft Education Endowment Fund	461,417
Marilyn R. and Leo F. Corrigan, Jr. Endowment Fund	396,467
Dr. Anson L. Clark Endowment Fund	381,705
Bank of America Education and Outreach Endowment Fund	367,120
Arch and Anne Giles Kimbrough Endowment Fund	365,686
Andrea Brenner-McMullen Arts Support Endowment Fund	294,626
Selma Parrill Children's Education Endowment Fund	278,125
Kay Cattarulla Endowment Fund for Literary and Performing Arts	269,523
Clara and Leo Corrigan, Sr. Endowment Fund	257,811
JC Penney Teaching Resource Center Endowment Fund	226,243
Albert and Minnie Susman Education Endowment Fund	220,596
King Foundation Education Endowment Fund	217,699
Jane Du Pont and Barron U. Kidd Endowment	194,577
Dozier Travel Endowment Fund	190,344
Bromberg Endowment Fund	179,464
Brettell Lecture Series Endowment Fund	167,398
Shirley Philipson Pollock Internship in Art Librarianship Endowment	165,533
DeGolyer Endowment Fund	162,932
Levy Endowment Fund for Music	153,743
Education Endowment Fund	148,728
Nancy and Jeffrey Marcus Endowment Fund	143,531
Karen and Richard Pollock Endowment Fund	141,186
Collins Lecture Series Endowment Fund	137,273
Hobson Education Endowment Fund	136,491
Betty Moroney Norsworthy Endowment Fund	134,396
Arthur Andersen Education Endowment Fund	120,459
McGee Endowment for Arts & Letters Live	115,596
Rick and Diana Strauss Special Education Endowment	36,443
Gateway Gallery Endowment Fund	28,327
Print and Drawing Endowment Fund	19,438
	39,639,030

OPERATIONS AND OTHER SPECIFIED PURPOSE ENDOWMENT FUNDS

Expansion Campaign Endowment Fund	15,411,764
Family Fund Endowment Fund	10,958,939
The Eugene McDermott Director's Endowment	6,685,957
General Operations Endowment Fund	5,546,180
Anonymous	4,849,142
Edward W. and Deedie Rose Endowment	4,789,774
Fannie and Stephen Kahn Fund	3,861,720
Edmund J. and Louise W. Kahn Endowment Fund	3,589,487
Gayle David Fogelson Endowment Fund	2,701,454
Anonymous Endowment Fund	2,677,688
Board Designated Reserve	2,265,638
McDermott Challenge Endowment	2,077,960
Program Endowment Fund	1,398,943
Anonymous Endowment Fund	1,321,906
McDermott Garden Endowment Fund	1,240,704
Sarah M. & Charles E. Seay Fund in honor of Jack R. Munger	980,657
Anne Marie & Thomas Walker Fund	967,120
NEA Challenge Grant Endowment Fund	790,085
DMA League Museum Beautification Endowment Fund	723,178
The Clarence and Ruth Roy Endowment Fund	577,088
Anonymous Director's Assistants Endowment Fund	553,790
Ernest and Irene Wadel Endowment Fund	481,451
Frank and Binswanger Fresh Flower Fund	438,188
S. T. Harris Endowment Fund	412,672
Fay and Newt Walker Endowment Fund	361,907
Shirley Pollock Endowment Fund	260,762
Harry and Ellen Parker Endowment Fund	248,091
Patsy Nasher Endowment Fund	141,478
Fleischner Courtyard Maintenance Endowment Fund	35,386
	76,349,109
	\$ 234,247,198



© 2023 Dallas Museum of Art

CONTRIBUTORS

Agustín Arteaga, Tamara Wootton Forsyth, Eric Zeidler, Ellee McMeans, Aschelle Morgan, Veronica Treviño Salinas, Tricia Earl, Brian MacElhose, Carol Griffin, Yemi Dubale, Kathy Everitt

COPYEDITING

Queta Moore Watson

DESIGN

Vynsie Law, Kenna Montgomery

PHOTOGRAPHY AND IMAGING SERVICES

Trey Burns, Giselle Castro-Brightenburg, Tamytha Cameron, Brad Flowers, Paul Molinari, Chad Redmon

The Dallas Museum of Art is supported, in part, by the generosity of DMA Members and donors, the National Endowment for the Arts, the Texas Commission on the Arts, and the citizens of Dallas through the City of Dallas Office of Arts and Culture.



IMAGINE YOUR JOURNEY

IMAGINA TU AVENTURA

DALLAS MUSEUM OF ART

dma.org